

GERARD

L I G H T I N G

2015 INNOVATIVE PRODUCT SOLUTIONS





Working 100% output

Entertaining 50% output

Relaxing 5% output



Experience the difference with RealAmbient® LED Technology

The Astara Range utilises the unique Real Ambient® LED technology to “Colour Shift” the light output from a crisp 2900k to a relaxing 1800k when dimmed. The effect is similar to that of a traditional Halogen lamp, where colour temperature adds warmth to the room when dimmed.

Easy to install with quick connect driver, flex and plug.



Gimbal Style Luminaire

ASTARA1/6SSD WHITE
ASTARA2/6SSD SATIN CHROME



Diffused Style Luminaire

ASTARAD1/6SSD WHITE
ASTARAD2/6SSD SATIN CHROME

Astara
RealAmbient



CONTENTS

DOWNLIGHTS	1-8	
DIMMERS	9-10	
SENSORS	11-12	
OYSTERS	13-16	
BATTENS	17-18	
WEATHERPROOF	19-20	
EMERGENCY	21-26	
FLOODLIGHTS	27-32	
BUNKERS	33-38	
WALL LIGHTS	39-42	
UPLIGHTS	43-44	
LANDSCAPE	45-46	

Quick Link Videos

LEDSMART XPERT DIMMER	9	
DBLED BATTEN INSTALLATION	17	

XL - LED2 DOWNLIGHT

Available in September-2015



Flush Diffuser, White Trim

- IC Rated. Can be covered and abutted
- Die-cast aluminium rear heat sink
- Complete with driver, flex and plug
- 50,000 hours life, 5 year warranty
- Height 42mm, width 109mm. IP54

LED

Product Code	Ref Number	Colour	Colour Temp	Lumen	Cut Out (mm)
28292	XL-LED2FD12WH3K	White	3000K	920Lm	Ø90
28293	XL-LED2FD12WH4K	White	4000K	990Lm	Ø90

XL - LED2 DOWNLIGHT

Available in September-2015



Flush Diffuser, Brushed Chrome Trim

- IC Rated. Can be covered and abutted
- Die-cast aluminium rear heat sink
- Complete with driver, flex and plug
- 50,000 hours life, 5 year warranty
- Height 42mm, width 109mm. IP54

LED

Product Code	Ref Number	Colour	Colour Temp	Lumen	Cut Out (mm)
27454	XL-LED2FD12SC3K	Brushed Chrome	3000K	920Lm	Ø90
27455	XL-LED2FD12SC4K	Brushed Chrome	4000K	990Lm	Ø90

XL - LED2 DOWNLIGHT

Available in September-2015



Recessed Diffuser, White Trim

- IC Rated. Can be covered and abutted
- Die-cast aluminium rear heat sink
- Complete with driver, flex and plug
- 50,000 hours life, 5 year warranty
- Dim Height 42mm, width 109mm. IP54

LED

Product Code	Ref Number	Colour	Colour Temp	Lumen	Cut Out (mm)
27456	XL-LED2RD12WH3K	White	3000K	920Lm	Ø90
27457	XL-LED2RD12WH4K	White	4000K	990Lm	Ø90

XL - LED2 DOWNLIGHT

Available in September-2015



Recessed Diffuser, Brushed Chrome Trim

- IC Rated. Can be covered and abutted
- Die-cast aluminium rear heat sink
- Complete with driver, flex and plug
- 50,000 hours life, 5 year warranty
- Height 42mm, width 109mm. IP54

LED

Product Code	Ref Number	Colour	Colour Temp	Lumen	Cut Out (mm)
27458	XL-LED2RD12SC3K	Brushed Chrome	3000K	920Lm	Ø90
27459	XL-LED2RD12SC4K	Brushed Chrome	4000K	990Lm	Ø90

XL - LED2 DOWNLIGHT

Available in October-2015



Flush Diffuser, White Trim

- IC Rated. Can be covered and abutted
- Die-cast aluminium rear heat sink
- Complete with driver, flex and plug
- 35,000 hours life, 5 year warranty
- Height 42mm, width 90mm. IP54
- 70mm cut out

LED

Product Code	Ref Number	Colour	Colour Temp	Lumen	Cut Out (mm)
27460	XL-LED2FD12WH3K70mm	White	3000K	800Lm	Ø70
27461	XL-LED2FD12WH4K70mm	White	4000K	850Lm	Ø70

XL - LED2 DOWNLIGHT

Available in October-2015



Recessed Diffuser, White Trim

- IC Rated. Can be covered and abutted
- Die-cast aluminium rear heat sink
- Complete with driver, flex and plug
- 35,000 hours life, 5 year warranty
- Height 42mm, width 90mm. IP54
- 70mm cut out

LED

Product Code	Ref Number	Colour	Colour Temp	Lumen	Cut Out (mm)
27462	XL-LED2RD12WH3K70mm	White	3000K	800Lm	Ø70
27463	XL-LED2RD12WH4K70mm	White	4000K	850Lm	Ø70

PierLUX ECO LED DOWNLIGHT



PIERLITE

Recessed Diffuser, White Trim

- Excellent dimming capabilities
- Die-cast aluminium rear heat sink
- Complete with driver, flex and plug
- 30,000 hours life. 3 year warranty
- Height 42mm, width 115mm. IP44

LED

Product Code	Colour	Colour Temp	Lumen	Cut Out (mm)	
ECOLED1/3K	White	3000K	860Lm	Ø90	
ECOLED1/10/3K	White	3000K	860Lm	Ø90	10 pack
ECOLED5/4K	White	4000K	970Lm	Ø90	
ECOLED5/10/4K	White	4000K	970Lm	Ø90	10 pack

PierLUX ECO LED DOWNLIGHT



PIERLITE

Recessed Diffuser, Brushed Chrome Trim

- Excellent dimming capabilities
- Die-cast aluminium rear heat sink
- Complete with driver, flex and plug
- 30,000 hours life. 3 year warranty
- Height 42mm, width 115mm. IP44

LED

Product Code	Colour	Colour Temp	Lumen	Cut Out (mm)	
ECOLED2/3K	Brushed Chrome	3000K	860Lm	Ø90	
ECOLED6/4K	Brushed Chrome	4000K	970Lm	Ø90	

PierLUX ECO IP65 LED DOWNLIGHT



PIERLITE

Recessed Diffuser, White Trim

- Excellent dimming capabilities
- Die-cast aluminium rear heat sink
- Complete with driver, flex and plug
- 30,000 hours life. 3 year warranty
- Height 42mm, width 115mm. IP65

LED

Product Code	Colour	Colour Temp	Lumen	Cut Out (mm)	
ECOLED/65/1	White	3000K	860Lm	Ø90	
ECOLED/65/5	White	4000K	970Lm	Ø90	



Smart Scan Sensor

360° detection that saves on energy, now that's smart

The Smart Scan is a cost effective, compact and low profile 360° passive infrared (PIR) sensor. With single or dual 10A output and a built in light sensor, the Smart Scan is suitable for lighting applications where energy savings are important. The Smart Scan features patented 'push to reveal' sensor controls for simple setup and reliable operation.



Product Code: SMARTSCAN1
SMARTSCAN2

Smart Scan Sensor



PierLUX PLUS - LARGE DIAMETER DOWNLIGHT



Recessed Diffuser, White Trim

- Large diameter (150mm cut out) downlight
- Die-cast aluminium rear heat sink
- Complete with driver, flex and plug
- 35,000 hours life. 3 year warranty
- Height 70mm, width 175mm. IP40

LED

Product Code	Colour	Colour Temp	Lumen	Cut Out (mm)
PIERLUX/5/3K	White	3000K	1283Lm	Ø150
PIERLUX/5/4K	White	4000K	1458Lm	Ø150

PierLUX PLUS - LARGE DIAMETER DOWNLIGHT



Recessed Diffuser, White Trim

- Large diameter (170mm cut out) downlight
- Die-cast aluminium rear heat sink
- Complete with driver, flex and plug
- 35,000 hours life. 3 year warranty
- Height 78mm, width 195mm. IP40

LED

Product Code	Colour	Colour Temp	Lumen	Cut Out (mm)
PIERLUX/6/3K	White	3000K	1606Lm	Ø170
PIERLUX/6/4K	White	4000K	1825Lm	Ø170

PierLUX PLUS - LARGE DIAMETER DOWNLIGHT



Recessed Diffuser, White Trim

- Large diameter (200mm cut out) downlight
- Die-cast aluminium rear heat sink
- Complete with driver, flex and plug
- 35,000 hours life. 3 year warranty
- Height 86mm, width 230mm. IP40

LED

Product Code	Colour	Colour Temp	Lumen	Cut Out (mm)
PIERLUX/8/3K	White	3000K	1930Lm	Ø200
PIERLUX/8/4K	White	4000K	2193Lm	Ø200

STARBURST CRYSTAL ECO DOWNLIGHT



PIERLITE



Gimbal, White Trim

- Excellent dimming capabilities
- Complete with driver, flex and plug
- 50,000 hours life, 3 year warranty
- Height 100mm, width 100mm. IP20

LED

Product Code	Colour	Colour Temp	Lumen	Cut Out (mm)	
CRYSEC01	White	3000K	805Lm	Ø70 & 90	
CRYSEC01/10	White	3000K	805Lm	Ø70 & 90	10 Pack
CRYSEC05	White	4000K	820Lm	Ø70 & 90	
CRYSEC05/10	White	4000K	820Lm	Ø70 & 90	10 Pack

STARBURST CRYSTAL ECO DOWNLIGHT



PIERLITE



Gimbal, Satin Chrome Trim

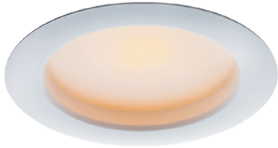
- Excellent dimming capabilities
- Complete with driver, flex and plug
- 50,000 hours life, 3 year warranty
- Height 100mm, width 100mm. IP20

LED

Product Code	Colour	Colour Temp	Lumen	Cut Out (mm)	
CRYSEC02	Satin Chrome	3000K	805Lm	Ø70 & 90	
CRYSEC02/10	Satin Chrome	3000K	805Lm	Ø70 & 90	10 Pack
CRYSEC06	Satin Chrome	4000K	820Lm	Ø70 & 90	
CRYSEC06/10	Satin Chrome	4000K	820Lm	Ø70 & 90	10 Pack



ASTARA - REAL AMBIENT DOWNLIGHT



**Bonus Free
MEDM Dimmer
Included**



Diffused, White Trim

- Superior dimming colour control, colour shifts from 2900K to 1800K dimmed
- Die-cast aluminium rear heat sink
- 50,000 hours life, 5 year warranty
- 6 pack comes with MEDM dimmer
- Height 42mm, width 115mm. IP44

LED

Product Code	Colour	Colour Temp	Lumen	Cut Out (mm)	
ASTARAD1/6SSD	White	2900K - 1800K	764Lm	Ø90	6 pack

ASTARA - REAL AMBIENT DOWNLIGHT



**Bonus Free
MEDM Dimmer
Included**



Diffused, Satin Chrome Trim

- Superior dimming colour control, colour shifts from 2900K to 1800K dimmed
- Die-cast aluminium rear heat sink
- 50,000 hours life, 5 year warranty
- 6 pack comes with MEDM dimmer
- Height 42mm, width 115mm. IP44

LED

Product Code	Colour	Colour Temp	Lumen	Cut Out (mm)	
ASTARAD2/6SSD	Satin Chrome	2900K - 1800K	764Lm	Ø90	6 pack

If your food
looks “yucky”
under our lights,
hire a chef.



ASTARA - REAL AMBIENT DOWNLIGHT



**Bonus Free
MEDM Dimmer
Included**



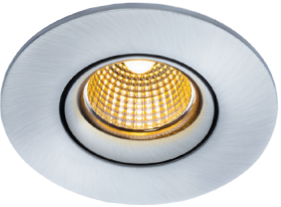
Gimbal, White Trim

- Superior dimming colour control, colour shifts from 2900K to 1800K dimmed
- Die-cast aluminium rear heat sink
- 50,000 hours life, 5 year warranty
- 6 pack comes with MEDM dimmer
- Height 70mm, width 100mm. IP20

LED

Product Code	Colour	Colour Temp	Lumen	Cut Out (mm)	
ASTARA1/6SSD	White	2900K - 1800K	706Lm	Ø70 & 90	6 pack

ASTARA - REAL AMBIENT DOWNLIGHT



**Bonus Free
MEDM Dimmer
Included**



Gimbal, Satin Chrome Trim

- Superior dimming colour control, colour shifts from 2900K to 1800K dimmed
- Die-cast aluminium rear heat sink
- 50,000 hours life, 5 year warranty
- 6 pack comes with MEDM dimmer
- Height 70mm, width 100mm. IP20

LED

Product Code	Colour	Colour Temp	Lumen	Cut Out (mm)	
ASTARA2/6SSD	Satin Chrome	2900K - 1800K	706Lm	Ø70 & 90	6 pack



**6 pack includes bonus
FREE MEDM dimmer**

LED SMART DIMMER



Adaptive Phase Dimmer

- 2-wire design, no neutral required
- Optimised dimming of LED lamps
- Suitable for traditional lamp sources
- Adjustment for minimum or maximum dim level
- Soft glow On indicator

Fitting

Product Code	Watts Min	Watts Max	Min dim Level	Connection	Integrated switch
MEDM	2w	400w	0% (typical)	2-wire	No

LED SMART XPERT DIMMER



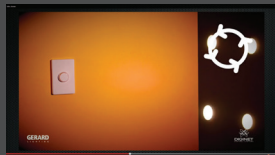
Programmable Digital Rotary Dimmer

- Integrated switch - tap on, tap off
- Fully programmable via simple 4-step process
- Bedroom feature - double tap to dim down over 30 minutes
- Interchangeable large and small dials, coloured indicator rings
- Optimised dimming of LED lamps, suitable for all lamp types

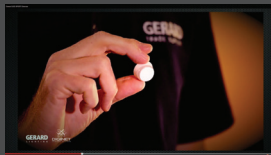
Fitting

Product Code	Watts Min	Watts Max	Min dim Level	Connection	Integrated switch
MEDM/DGRT	1w	400w	0% (typical)	2-wire	Yes

Quick Link Videos



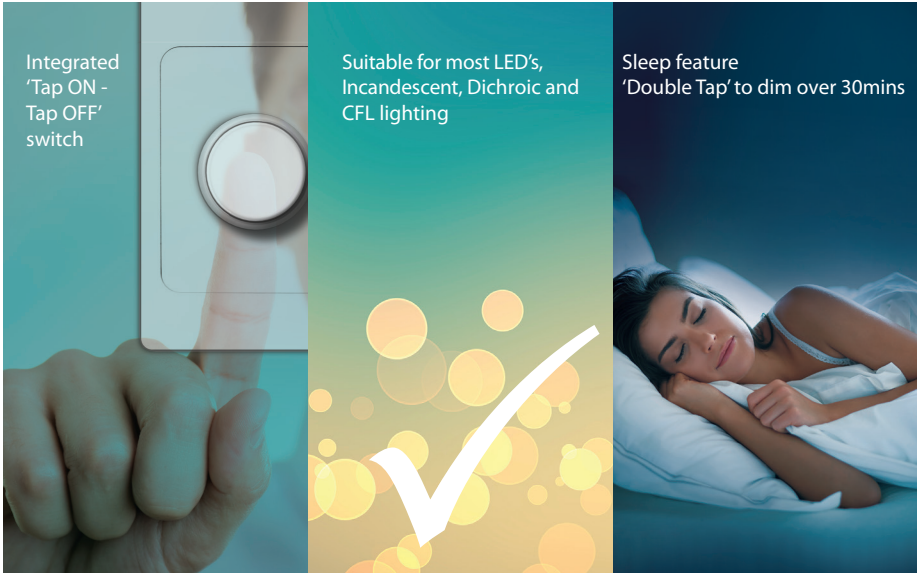
Introduction
LED SMART
XPERT
Dimmer



How to install
LED SMART
XPERT Dimmer



MEDM Adaptive
Phase Dimmer
- FAQ



LEDSMART XPERT™

ROTARY DIMMER / SWITCH

The LEDSmart™ Xpert™ rotary dimmer/switch works with beautiful design options and optimised LED dimming performance.

Fully programmable via a simple process, it fits into most Australian switch plates and comes with an integrated 'Tap on - Tap off' switch. LED indicator inside the dial can be programmed to stay on at night as a night light in the kid's bedrooms.



LEDSMART XPERT



PIR MOTION SENSORS



Wall/Ceiling Mounted Ball Type PIR Sensor

- PIR sensor 1100W/550W load; Range of 12m
- Horizontal arc sensitivity of 180°
- Adjustable controls for sensitivity (Lux) and time (Dwell)
- Manual override mode to bypass PIR sensor; No minimum load requirement
- Mounting between 2.5 and 3.5 metres above ground

Fitting

Product Code	Reference	Colour	Dimensions (mm)
25201	CS1100W	White	85 x 70 x 95
26296	CS1100S	Silver	85 x 70 x 95

PIR MOTION SENSORS



Circular Ceiling Mounted PIR Sensor

- PIR sensor 1200W load; Range of 12m
- Horizontal arc sensitivity of 360°
- Adjustable controls for sensitivity (Lux) and time (Dwell)
- Manual override mode to bypass PIR sensor; No minimum load requirement
- Mounting between 3 and 5.5 metres above ground

Fitting

Product Code	Reference	Colour	Dimensions (mm)
26535	CS1020W	White	Ø106 x 53

PIR MOTION SENSORS



Rectangular Wall Mounted PIR Sensor

- PIR sensor 1200W load; Range of 12m
- Horizontal arc sensitivity of 180°
- Adjustable controls for sensitivity (Lux) and time (Dwell)
- Manual override mode to bypass PIR sensor; No minimum load requirement
- Mounting between 2 and 4.5 metres above ground

Fitting

Product Code	Reference	Colour	Dimensions (mm)
26536	CS1021W	White	55 x 92 x 65

PIR MOTION SENSORS



Wall/Ceiling Corner Mounted PIR Ball Sensor

- PIR sensor 1200W load; Range of 12m
- Horizontal arc sensitivity of 140°
- Adjustable controls for sensitivity (Lux) and time (Dwell)
- Manual override mode to bypass PIR sensor; No minimum load requirement
- Mounting between 0.5 and 3.5 metres above ground

Fitting

Product Code	Reference	Colour	Dimensions (mm)
26537	CS1015W	White	103 x 60 x 90

SMART SCAN 1 SENSOR



PIR Presence Sensor, 1 Channel Output

- Up to 10A of inductive output load switching
- High sensitivity 360 degree detection array
- Integrated light level detector
- Small, unobtrusive, flush-mount design
- Simple 'push to reveal' sensor controls

Fitting

Product Code	Sensor type	Angle of view	No. of outputs	Max load	Mounting
SMARTSCAN1	PIR	360 degree	1	10A	Flush/Ceiling

SMART SCAN 2 SENSOR



PIR Presence Sensor, 2 Channel Output

- Two relay output channels, maximum 10A inductive per channel
- Second output includes a 5 minute on-run time out
- High sensitivity 360 degree detection array
- Integrated light level detector
- Small, unobtrusive, flush-mount design
- Simple 'push to reveal' sensor controls

Fitting

Product Code	Sensor type	Angle of view	No. of outputs	Max load	Mounting
SMARTSCAN2	PIR	360 degree	2	10A per channel	Flush/Ceiling

XL LED 12W CIRCULAR OYSTER



LED Circular Oyster

- Opal diffuser
- Suitable for damp and humid areas
- Twist lock diffuser
- Integral LED driver
- 30,000 hours life, 3 year warranty, IP44

LED

Product Code	Reference	Colour	Colour Temp	Lumen	Dimensions (mm)
27278	XL-LED116S	White	4000K	800Lm	Ø290 x105

XL LED 18W CIRCULAR OYSTER



LED Circular Oyster

- Opal diffuser
- Suitable for damp and humid areas
- Twist lock diffuser
- Integral LED driver
- 30,000 hours life, 3 year warranty, IP44

LED

Product Code	Reference	Colour	Colour Temp	Lumen	Dimensions (mm)
27276	XL-LED116M	White	4000K	1100Lm	Ø350 x 120

ORION LED OYSTER



Orion LED Oyster

- Opal diffuser
- Low glare
- Twist lock diffuser
- Integral LED driver
- 30,000 hours life, 3 year warranty, IP20

LED

Product Code	Reference	Colour	Watts	Colour Temp	Lumen	Dimensions (mm)
ORIONLED	ORIONLED	White	15w	4000K	915Lm	Ø275 x 90
ORIONLEDLARGE	ORIONLEDLARGE	White	22w	4000K	1496Lm	Ø370 x 90



POLO LED OYSTER 350MM



Polo LED Oyster

- Opal diffuser
- Suitable for damp and humid areas
- Strong captive clips
- Integral LED driver
- 30,000 hours life, 3 year warranty, IP65, IK10

LED

Product Code	Reference	Colour	Watts	Colour Temp	Lumen	Dimensions (mm)
POLOLED264	16W IP65 LED	White	16w	6500K	870Lm	Ø350 x 130

POLO LED SENSOR OYSTER 350MM



Polo LED Oyster

- Opal diffuser
- Suitable for damp and humid areas
- Strong captive clips
- Internal movement sensor and LED driver
- 30,000 hours life, 3 year warranty, IP65, IK10

LED

Product Code	Reference	Colour	Watts	Colour Temp	Lumen	Dimensions (mm)
POLOLED264-MS	16W IP65 LED	White	16w	6500K	870Lm	Ø350 x 130



POLO LED OYSTER 430MM



PIERLITE

Polo LED Oyster

- Opal diffuser
- Suitable for damp and humid areas
- Strong captive clips
- Integral LED driver
- 30,000 hours life, 3 year warranty, IP65, IK10

LED

Product Code	Reference	Colour	Watts	Colour Temp	Lumen	Dimensions (mm)
POLOLED408	23W IP65 LED	White	23w	6500K	1360Lm	Ø430 x 130

POLO LED SENSOR OYSTER 430MM



PIERLITE

Polo LED Oyster

- Opal diffuser
- Suitable for damp and humid areas
- Strong captive clips
- Internal movement sensor and LED driver
- 30,000 hours life, 3 year warranty, IP65, IK10

LED

Product Code	Reference	Colour	Watts	Colour Temp	Lumen	Dimensions (mm)
POLOLED408-MS	23W IP65 LED	White	23w	6500K	1360Lm	Ø430 x 130



DBLED BATTEN



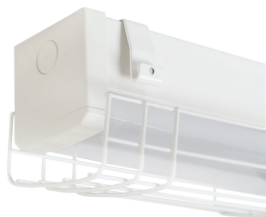
Premium LED Batten

- Pierlite deluxe LED batten. Removable single piece module, held in place with captive end caps. Powder coated steel housing and polycarbonate diffuser
- Textured opal diffuser, allowing an even distribution of light output
- Plug and socket for removal of opal diffuser
- End to end mounting

LED

Product Code	Colour	Watts	Colour Temp	Lumen	Dimensions (mm)
DBLED/2	White	20w	4000K	1949Lm	600 x 74 x 73
DBLED/4	White	40w	4000K	3957Lm	1200 x 74 x 73

DBLED WIRE GUARD BATTEN



Premium LED Batten Complete with Wire Guard

- Pierlite deluxe LED batten. Removable single piece module, held in place with captive end caps. Powder coated steel housing and polycarbonate diffuser
- Textured opal diffuser, allowing an even distribution of light output
- Plug and socket for removal of opal diffuser
- End to end mounting, IK10 wire guard

LED

Product Code	Colour	Watts	Colour Temp	Lumen	Dimensions (mm)
DBLED/2/WG	White	20w	4000K	1949Lm	600 x 74 x 88
DBLED/4/WG	White	40w	4000K	3957Lm	1200 x 74 x 88

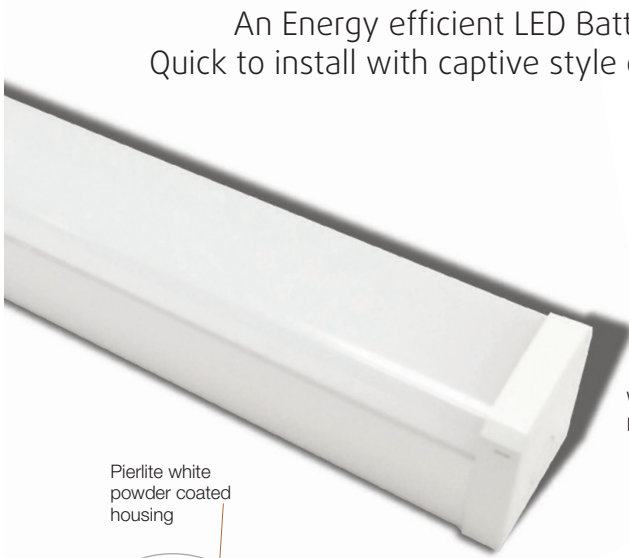
Quick Link Video

DBLED Batten
Installation Video

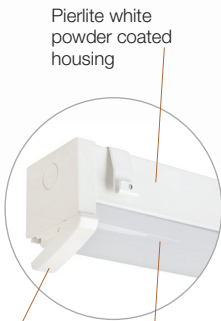
The 'Quick Fit' Professional Solution

DELUXE LED BATTEN

An Energy efficient LED Batten.
Quick to install with captive style end caps.



Wire guard option (WG model)
In built wire suspension capability



Captive end caps.

Opal diffuser

20mm knockouts
for conduit or cable glands



End to end
mounting



Easy to install with
un-pluggable LED
module

Product Code: DBLED/2, DBLED/4
DBLED/2/WG, DBLED/4/WG

DBLED Batten



WEATHERPROOF BATTEN



Weatherproof LED Batten

- Stainless steel clips
- Polyurethane foam gasket
- LED driver and metal tray
- 30,000 hours rated average life

LED

Reference	Ref Number	Colour	Colour Temp	Lumen	Dimensions (mm)
27213	FDE218LED4K	Grey	4000K	3180Lm	1275 x 100 x 158

VANDALED BATTEN

Made to Order



Weatherproof LED Batten

- Die-cast aluminium LM6 Body
- Stainless steel tamper resistant screws
- IK10 impact resistant
- Polycarbonate cover
- IP65, IK10, -25 to 40 degree temperature rating

LED

Product Code	Colour	Watts	Colour Temp	Lumen	Dimensions (mm)
VandaLED12D	Grey	12w	4000K	1225Lm	600 x 70 x 85
VandaLED25D	Grey	25w	4000K	2252Lm	600 x 70 x 85



BWP/TECO BATTEN



PIERLITE

Weatherproof LED Batten

- 670mm 20W with frosted polycarbonate diffuser and stainless steel clips
- Light grey colour, self extinguishing polycarbonate body with UV inhibitors

LED

Product Code	Colour	Colour Temp	Lumen	Dimensions (mm)
BWP/TECO20W4	Light Grey	4000K	1662Lm	670 x 152 x 104

BWP/TECO BATTEN



PIERLITE

Weatherproof LED Batten

- 1300mm 40W with frosted polycarbonate diffuser and stainless steel clips
- Light grey colour, self extinguishing polycarbonate body with UV inhibitors

LED

Product Code	Colour	Colour Temp	Lumen	Dimensions (mm)
BWP/TECO40W4	Light Grey	4000K	3281Lm	1300 x 152 x 104



DIRECTOR LED EXIT



Surface Mount, Wall, Flat Diffuser

- Traditional box style exit
- Surface mount wall with flat diffuser
- One box solution including body, diffuser & pictogram decal
- 30,000 hours LED
- 24m viewing distance

LED

Product Code	Colour	Type	Dimensions (mm)
DIRLEDPSS	White	Surface mount wall	380 x 160 x 110

DIRECTOR LED EXIT



Surface Mount, Ceiling Diffuser

- Traditional box style exit
- Surface mount with ceiling diffuser
- One box solution including body, diffuser & pictogram decal
- 30,000 hours LED
- 24m viewing distance

LED

Product Code	Colour	Type	Dimensions (mm)
DIRLEDPDS	White	Surface mount ceiling	380 x 160 x 230



LED BLADE EXIT



PIERLITE

Surface or Recess Mount

- Slimline swivel action blade, slide connect
- Surface or recess mount
- One box solution including body, diffuser & pictogram decal
- 30,000 hours LED
- 24m viewing distance

LED

Product Code	Colour	Type	Dimensions (mm)
LEDXM2P	White	Surface mount	368 x 55 x 235
LEDRB	White	Recess Bracket	380 x 88 (recess cut out)

STINGRAY LED EXIT



PIERLITE

Surface Mount, Wall / Ceiling

- Slide connect installation
- Surface mount, wall / ceiling
- One box solution including body, diffuser & pictogram decal
- 30,000 hours LED
- 24m viewing distance

LED

Product Code	Colour	Type	Dimensions (mm)
STLED	White	Surface mount	395 x 81 x 245

The intelligent DALI Emergency Lighting Monitoring System with 'One Click' Commissioning

RAPIX
EMERGENCY



LED FIREFLY EMERGENCY



Recessed Mount

- Recessed, fully self contained emergency
- Available with surface can or vandal kit (not included)
- Quick installation
- 50,000 hours LED
- D25, D25 classification

LED

Product Code	Colour	Type	Dimensions (mm)	Cut Out (mm)
FFRLED	White	Recessed	Ø140 x 48	Ø120

PATHFINDER EMERGENCY



Recessed Surface Mount

- Recessed with remote gear & battery
- Small/large trim for inaccessible ceilings
- Available with vandal kit or as surface mount (not included)
- 50,000 hours LED
- D40, D40 classification

LED

Product Code	Colour	Type	Dimensions (mm)	Cut Out (mm)	
PFLER-R	White	Recessed	Ø60	Ø50	Small reflector
	Free Issue	Recessed	Ø140	Ø120	Large reflector



GUARDIAN LED EMERGENCY FLOODLIGHT



Surface Mount, Flood

- High performance 2 x 3.5w LED, comparable to a 2 x 21w halogen
- Surface mount
- Adjustable heads with multi LED panels
- Weatherproof enclosure available to suit (not included)
- 30,000 hours LED

LED

Product Code	Colour	Type	Dimensions (mm)
GRLED7FL	White	Surface Mount	350 x 105 x 80
GRWPENCL		Weatherproof enclosure	400 x 195

GUARDIAN LED EMERGENCY FLOODLIGHT



Surface Mount, Spot

- High performance 2 x 3.5w LED, comparable to a 2 x 21w halogen
- Surface mount
- Adjustable spot light with heads
- Weatherproof enclosure available to suit (not included)
- 30,000 hours LED

LED

Product Code	Colour	Type	Dimensions (mm)
GRLED7SP	White	Surface Mount	350 x 105 x 80
GRWPENCL		Weatherproof enclosure	400 x 195

GUARDIAN LED EMERGENCY - ELITE FLOODLIGHT



Surface Mount, Spot

- High performance 2 x 3.5w LED, comparable to a 2 x 21w halogen
- Adjustable eyeball spot lights
- Weatherproof enclosure available to suit (not included)
- 30,000 hours LED

LED

Product Code	Colour	Type	Dimensions (mm)
GRLED7E	White	Surface Mount	307 x 140 x 90
GRWPENCL		Weatherproof enclosure	400 x 195

POLO LED EMERGENCY



Circular, Internal / External, Ceiling / Wall

- 16w, maintained, IP65, circular emergency
- Robust polycarbonate body & lens
- Easy access to gear & LED via captive clips
- 50,000 hours LED
- D50, D50 classification

LED

Product Code	Colour	Type	Dimensions (mm)
POLOLED264M	White	Ceiling/Wall Mount	Ø350 x 130

POLO LED EMERGENCY WITH SENSOR



Circular, Internal / External, Ceiling / Wall with Sensor

- 16w, maintained, IP65, circular emergency
- Robust polycarbonate body & lens
- Integrated occupancy & light level sensor with adjustable time-out period
- 50,000 hours LED
- D50, D50 classification

LED

Product Code	Colour	Type	Dimensions (mm)
POLOLED264M-MS	White	Ceiling/Wall Mount	Ø350 x 130



POLO LED EMERGENCY



Circular, Internal / External, Ceiling / Wall

- 23w, maintained, IP65, circular emergency
- Robust polycarbonate body & lens
- Easy access to gear & LED via captive clips
- 50,000 hours LED
- D63, D63 classification

LED

Product Code	Colour	Type	Dimensions (mm)
POLOLED408M	White	Ceiling/Wall Mount	Ø430 x 140

POLO LED EMERGENCY WITH SENSOR



Circular, Internal / External, Ceiling / Wall with Sensor

- 23w, maintained, IP65, circular emergency
- Robust polycarbonate body & lens
- Integrated occupancy & light sensor with adjustable time-out period
- 50,000 hours LED
- D63, D63 classification

LED

Product Code	Colour	Type	Dimensions (mm)
POLOLED408M-MS	White	Ceiling/Wall Mount	Ø431 x 140



FL10B FLOODLIGHT



LED Floodlight Black

- Die cast aluminium body
- Integral driver
- Complete with 1.5m flex and plug
- 40,000 hours average rated life

LED

Product Code	Ref Number	Colour	Colour Temp	Lumen	Dimensions (mm)
27104	FL10B	Black	3800K	593Lm	85 x 115 x 90

FL20B FLOODLIGHT



LED Floodlight Black

- Die cast aluminium body
- Integral driver
- Complete with 1.5m flex and plug
- 40,000 hours average rated life

LED

Product Code	Ref Number	Colour	Colour Temp	Lumen	Dimensions (mm)
27106	FL20B	Black	3800K	1369Lm	140 x 180 x 105

FL50B FLOODLIGHT



LED Floodlight Black

- Die cast aluminium body
- Integral driver
- Complete with 1.5m flex and plug
- 40,000 hours average rated life

LED

Product Code	Ref Number	Colour	Colour Temp	Lumen	Dimensions (mm)
27108	FL50B	Black	3800K	2870Lm	235 x 285 x 140

FL10S FLOODLIGHT



LED Floodlight Silver

- Die cast aluminium body
- Integral driver
- Complete with 1.5m flex and plug
- 40,000 hours average rated life

LED

Product Code	Ref Number	Colour	Colour Temp	Lumen	Dimensions (mm)
27310	FL10S	Silver	3800K	593Lm	85 x 115 x 90

FL20S FLOODLIGHT



LED Floodlight Silver

- Die cast aluminium body
- Integral driver
- Complete with 1.5m flex and plug
- 40,000 hours average rated life

LED

Product Code	Ref Number	Colour	Colour Temp	Lumen	Dimensions (mm)
27311	FL20S	Silver	3800K	1369Lm	140 x 180 x 105

FL50S FLOODLIGHT



LED Floodlight Silver

- Die cast aluminium body
- Integral driver
- Complete with 1.5m flex and plug
- 40,000 hours average rated life

LED

Product Code	Ref Number	Colour	Colour Temp	Lumen	Dimensions (mm)
27312	FL50S	Silver	3800K	2870Lm	235 x 285 x 140

FL20BS FLOODLIGHT



LED Floodlight with Sensor Black

- Die cast aluminium body
- Integral driver
- Complete with 1.5m flex and plug
- 40,000 hours average rated life

LED

Product Code	Ref Number	Colour	Colour Temp	Lumen	Dimensions (mm)
27116	FL20BS	Black	3800K	1368Lm	185 x 180 x 105

FL20SS FLOODLIGHT



LED Floodlight with Sensor Silver

- Die cast aluminium body
- Integral driver
- Complete with 1.5m flex and plug
- 40,000 hours average rated life

LED

Product Code	Ref Number	Colour	Colour Temp	Lumen	Dimensions (mm)
27314	FL20SS	Silver	3800K	1368Lm	185 x 180 x 105



HIPPO® FLOODLIGHTS



LED Floodlight Black

- Die cast aluminium body
- Integral driver
- Hinged front cover
- 40,000 hours average rated life

LED

Product Code	Colour	Watts	Colour Temp	Lumen	Weight	Dimensions (mm)
HIPPOMINI	Black	10w	6500K	730Lm	1.2Kg	200 x 150 x 155
HIPPOMIDI	Black	50w	6500K	3730Lm	5.0Kg	395 x 321 x 106
HIPPOMAXI	Black	100w	6500K	7000Lm	7.0Kg	465 x 380 x 128

HIPPO® MAXI 200 FLOODLIGHT



LED Floodlight Black

- Die cast aluminium body
- Integral driver
- Hinged front cover
- 40,000 hours average rated life

LED

Product Code	Colour	Colour Temp	Lumen	Weight	Dimensions (mm)
HIPPOMAXI200	Black	6500K	16000Lm	13.7Kg	525 x 380 x 128



SHADOW FLOODLIGHT

Available in September-2015



PIERLITE

LED Slimline Floodlight

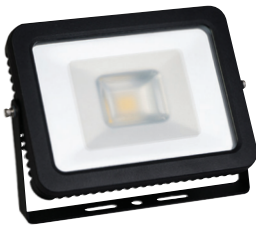
- Low profile design
- Integral driver
- Complete with 300mm flying lead
- 40,000 hours average rated life

LED

Product Code	Colour	Colour Temp	Lumen	Weight	Dimensions (mm)
SHADOW10BK	Black	4000K	822Lm	0.44Kg	146 x 125 x 40

SHADOW FLOODLIGHT

Available in September-2015



PIERLITE

LED Slimline Floodlight

- Low profile design
- Integral driver
- Complete with 300mm flying lead
- 40,000 hours average rated life

LED

Product Code	Colour	Colour Temp	Lumen	Weight	Dimensions (mm)
SHADOW20BK	Black	4000K	1567Lm	0.88Kg	176 x 141 x 44.5

Shadow Floodlight Key Features



Rotation



Heat Sink



Slimline

HUNTSMAN® FLOODLIGHT



PIERLITE

Compact Mini LED Floodlight

- Die cast aluminium body with heat sink and integrated driver
- Durable finish, electrophoresis coated and powder coated
- Hydrophobic membrane vent prevents condensation
- Complete with 500mm rewirable flying lead
- Dimmable
- 35,000 hours average rated life

LED

Product Code	Colour	Colour Temp	Lumen	Weight	Dimensions (mm)
HUNTSMANBK	Black	4100K	1950Lm	1Kg	96 x 123



CARLTON EXTERIOR LED BUNKER

Available in November-2015



Small Round Exterior Bunker

- Powder coated die-cast aluminium body
- Frosted glass diffuser
- IP44, 4000K
- 30,000 hours average lamp life
- 80 CRI

LED

Product Code	Ref Number	Colour	Colour Temp	Lumen	Dimensions (mm)
27464	EXLED6100PB	Black	4000K	500Lm	Ø180 x 95
27465	EXLED6100PW	White	4000K	500Lm	Ø180 x 95

CARLTON EXTERIOR LED CAGED BUNKER

Available in November-2015

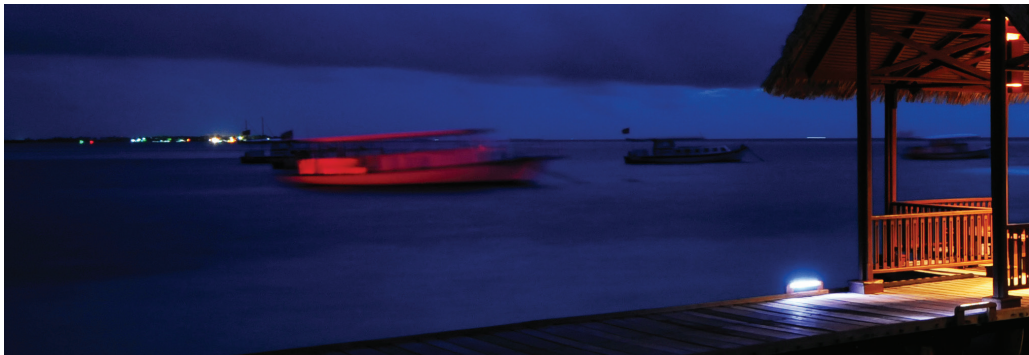


Small Round Caged Exterior Bunker

- Powder coated die-cast aluminium body
- Frosted glass diffuser
- IP44, 4000K
- 30,000 hours average lamp life
- 80 CRI

LED

Product Code	Ref Number	Colour	Colour Temp	Lumen	Dimensions (mm)
27466	EXLED6100CB	Black	4000K	500Lm	Ø180 x 95
27467	EXLED6100CW	White	4000K	500Lm	Ø180 x 95



CARLTON EXTERIOR LED BUNKER

Available in November-2015



Large Round Exterior Bunker

- Powder coated die-cast aluminium body
- Frosted glass diffuser
- IP44, 4000K
- 30,000 hours average lamp life
- 80 CRI

LED

Product Code	Ref Number	Colour	Colour Temp	Lumen	Dimensions (mm)
27468	EXLED6200PB	Black	4000K	950Lm	Ø240 x 125
27469	EXLED6200PW	White	4000K	950Lm	Ø240 x 125

CARLTON EXTERIOR LED CAGED BUNKER

Available in November-2015



Large Round Caged Exterior Bunker

- Powder coated die-cast aluminium body
- Frosted glass diffuser
- IP44, 4000K
- 30,000 hours average lamp life
- 80 CRI

LED

Product Code	Ref Number	Colour	Colour Temp	Lumen	Dimensions (mm)
27470	EXLED6200CB	Black	4000K	950Lm	Ø240 x 125
27471	EXLED6200CW	White	4000K	950Lm	Ø240 x 125



CARLTON EXTERIOR LED BUNKER

Available in November-2015



Small Oval Exterior Bunker

- Powder coated die-cast aluminium body
- Frosted glass diffuser
- IP44, 4000K
- 30,000 hours average lamp life
- 80 CRI

LED

Product Code	Ref Number	Colour	Colour Temp	Lumen	Dimensions (mm)
27472	EXLED7100PB	Black	4000K	500Lm	210 x 110 x 90
27473	EXLED7100PW	White	4000K	500Lm	210 x 110 x 90

CARLTON EXTERIOR LED CAGED BUNKER

Available in November-2015

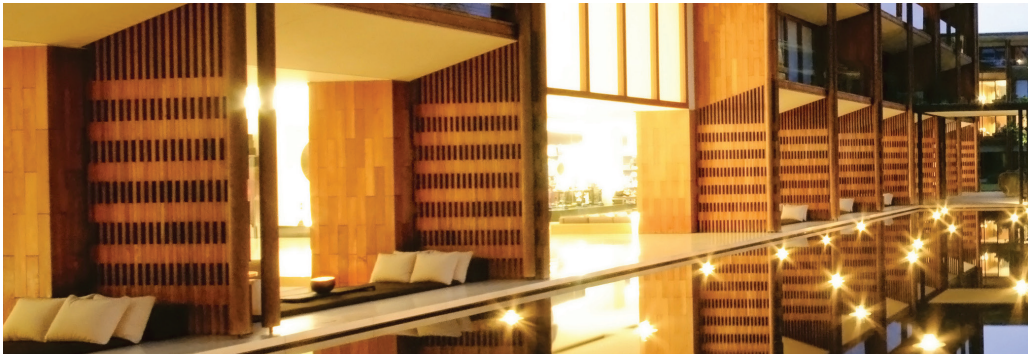


Small Oval Caged Exterior Bunker

- Powder coated die-cast aluminium body
- Frosted glass diffuser
- IP44, 4000K
- 30,000 hours average lamp life
- 80 CRI

LED

Product Code	Ref Number	Colour	Colour Temp	Lumen	Dimensions (mm)
27474	EXLED7100CB	Black	4000K	500Lm	210 x 110 x 90
27475	EXLED7100CW	White	4000K	500Lm	210 x 110 x 90



CARLTON EXTERIOR LED BUNKER

Available in November-2015



Large Oval Exterior Bunker

- Powder coated die-cast aluminium body
- Frosted glass diffuser
- IP44, 4000K
- 30,000 hours average lamp life
- 80 CRI

LED

Product Code	Ref Number	Colour	Colour Temp	Lumen	Dimensions (mm)
27476	EXLED7200PB	Black	4000K	950Lm	285 x 165 x 130
27477	EXLED7200PW	White	4000K	950Lm	285 x 165 x 130

CARLTON EXTERIOR LED CAGED BUNKER

Available in November-2015



Large Oval Caged Exterior Bunker

- Powder coated die-cast aluminium body
- Frosted glass diffuser
- IP44, 4000K
- 30,000 hours average lamp life
- 80 CRI

LED

Product Code	Ref Number	Colour	Colour Temp	Lumen	Dimensions (mm)
27478	EXLED7200CB	Black	4000K	950Lm	285 x 165 x 130
27479	EXLED7200CW	White	4000K	950Lm	285 x 165 x 130



JULUXLED2 BULKHEAD



Black Base 9W IP65 Bulkhead

- The Julux LED2 and Julux LED2-MS have been designed for use in commercial applications
- IP65, 6000K, Ta 40
- 35,000 hours average lamp life

LED

Product Code	Colour	Colour Temp	Lumen	Dimensions (mm)
JULUXLED2	Black	6000K	660Lm	245 x 125 x 120

JULUXLED2-MS SENSOR BULKHEAD

Available in September-2015



Black Base 9W IP65 Bulkhead with Motion Sensor

- Weather resistant polycarbonate body
- Low glare polycarbonate opal prismatic diffuser
- IP65, 6000K, Ta 40
- 35,000 hours average lamp life
- Integral motion sensor & integral constant current driver

LED

Product Code	Colour	Colour Temp	Lumen	Dimensions (mm)
JULUXLED2-MS	Black	6000K	660Lm	245 x 125 x 120

CENTRINA LED BULKHEAD



Rectangular Wall Mounted LED Bulkhead

- Polycarbonate lens and die-cast aluminium body
- Hinged prismatic lens with diffuser
- IP65, 6100K, Ta 40
- 30,000 hours average lamp life
- Concealed automatic built in motion sensor (CENT23LEDS)

LED

Product Code	Colour	Colour Temp	Lumen	Dimensions (mm)
CENT23WLED	Black	6100K	713Lm	260 x 300 x 180
CENT23WLEDS	Black	6100K	713Lm	260 x 300 x 180 Sensor



FORRENTO LED WALL LIGHT



Circular Eyelid Face Opal Wall Light

- Weather resistant polycarbonate body
- Low glare polycarbonate opal diffuser
- IP65, IK10, 6000K, 67 CRI
- 35,000 hours
- Integral constant current driver

LED

Product Code	Colour	Colour Temp	Lumen	Dimensions (mm)
FORRENBK	Black	6000K	1227Lm	Ø320 x 102
FORRENWH	White	6000K	1227Lm	Ø320 x 102

FORRENTO LED SENSOR WALL LIGHT



Circular Eyelid Face Opal Wall Light with Inbuilt Motion Sensor

- Weather resistant polycarbonate body
- Low glare polycarbonate opal diffuser
- IP65, IK10, 6000K, 67 CRI
- 35,000 hours
- Integral constant current driver

LED

Product Code	Colour	Colour Temp	Lumen	Dimensions (mm)
FORRENBK-MS	Black	6000K	1227Lm	Ø320 x 102
FORRENWH-MS	White	6000K	1227Lm	Ø320 x 102



HAMILTON WALL LIGHT



Exterior Wall Light

- Suitable for 1 x maximum 240V 42 watt ES base fancy round lamp
- 316 grade stainless steel construction

Fitting

Product Code	Ref Number	Finish	Dimensions (mm)	Lamp Included
24906	EXST031F	Stainless Steel	220 x 280 x 95	No

EX6040 EXTERIOR WALL LIGHT



Semi Cylindrical 240V GU10 Up/Down Wall Light

- Die-cast aluminium body
- Rectangular mounting base, clear face and side polycarbonate diffusers, ceramic lampholders
- Suitable for 2 x maximum 35 watt 240V GU10 halogen lamps

Fitting

Product Code	Ref Number	Finish	Dimensions (mm)	Lamp Included
25634	EX6040	Grey	110 x 110 x 235	No

EX14710/2 WALL LIGHT



Rectangular Up/Down Wall Light

- Die-cast aluminium construction
- Glass diffusers
- Ceramic lampholders
- Suitable for 2 x 50 watt 240V GU10 halogen lamps

Fitting

Product Code	Ref Number	Finish	Dimensions (mm)	Lamp Included
24893	EX14710/2	Silver	185 x 76 x 126	No

RAGLAN - WALL LIGHT



LED Exterior Wall Light

- 1 x 3 watt LED and LED driver inbuilt
- 316 stainless steel body and base
- Clear polycarbonate diffuser
- 30,000 hours average lamp life

LED

Product Code	Ref Number	Colour	Colour Temp	Lumen	Dimensions (mm)
27157	EXST5109LED	Stainless Steel	3000K	163Lm	Ø75 x 85

RAGLAN - WALL LIGHT



LED Exterior Adjustable Wall Light

- 1 x 3 watt LED and LED driver inbuilt
- 316 stainless steel body and base
- Clear polycarbonate diffuser
- 30,000 hours average lamp life

LED

Product Code	Ref Number	Colour	Colour Temp	Lumen	Dimensions (mm)
27158	EXST5110LED	Stainless Steel	3000K	163Lm	Ø75 x 142

RAGLAN - WALL LIGHT



LED Exterior Up/Down Wall Light

- 2 x 3 watt LEDs and LED driver inbuilt
- 316 stainless steel body and base
- Clear polycarbonate diffusers
- 30,000 hours average lamp life

LED

Product Code	Ref Number	Colour	Colour Temp	Lumen	Dimensions (mm)
27159	EXST5108LED	Stainless Steel	3000K	326Lm	Ø75 x 150 x 85



INGROUND UPLIGHT



Square Stainless Steel Inground Uplight

- 6mm thick 316 grade stainless steel rim and 8mm thick glass diffuser
- IP67, 1.2 watt/12V 12 diode LED array: bluish colour
- 10,000 hours average lamp life

LED

Product Code	Ref Number	Finish	Colour Temp	Lumen	Dimensions (mm)
24917	EXST5026	316 Stainless Steel	5000K	80Lm	108 x 108 x 110

INGROUND UPLIGHT



Round Stainless Steel Inground Uplight

- 6mm thick 316 grade stainless steel rim and 8mm thick glass diffuser
- IP67, 1.2 watt/12V 12 diode LED array: bluish colour
- 10,000 hours average lamp life

LED

Product Code	Ref Number	Finish	Colour Temp	Lumen	Dimensions (mm)
24916	EXST5025	316 Stainless Steel	5000K	80Lm	Ø108 x 110



EX07 INGROUND SPOTLIGHT



High Quality Inground Spotlight

- Clear safety glass with diffuser
- Adjustable head and inground spike

Tungsten Halogen

Product Code	Ref Number	Colour	Watts	Voltage	Lamp Included
19372	EX07B	Black	20w	12V	No

GLV504 INGROUND SPOTLIGHT



High Quality Copper Inground Spotlight

- Clear safety glass with diffuser
- Adjustable head and inground spike

Tungsten Halogen

Product Code	Ref Number	Colour	Watts	Voltage	Lamp Included
16937	GLV504CO	Copper	20w	12V	No



BOLLARD KIT



EX2000 Bollard Kit

- Suitable for 1 x maximum 240V 42 watt ES lamp
- Bollard kit containing EX2000 bollard head, 1 metre aluminium post and PVC base

Fitting

Product Code	Ref Number	Colour	Dimensions (mm)	Lamp Included
24050	EX2000BKIT	Black	Ø180 x 1000	No
24051	EX2000GRKIT	Green	Ø180 x 1000	No

EX1081 LOUVRED BOLLARD



EX1081 Louvred Bollard

- Powder coated finish
- Clear acrylic diffuser with louvre
- Suitable for 1 x maximum 240V 70 watt ES lamp

Fitting

Product Code	Ref Number	Colour	Dimensions (mm)	Lamp Included
20420	EX1081B	Black	Ø170 x 1100	No
20422	EX1081S	Silver	Ø170 x 1100	No



EX2000 BOLLARD HEAD



EX2000 Bollard Head

- Internal glass diffuser, ceramic lampholder
- Suitable for ES lamp
- Suitable for EX2002 bollard post

Fitting

Product Code	Ref Number	Colour	Dimensions(mm)	Lamp Included
19598	EX2000B	Black	Ø157 x 220	No
19599	EX2000GR	Green	Ø157 x 220	No

EXPC-OPAL SPHERE

Available in November-2015



EXPC-OPAL SPHERE

- Opal acrylic sphere
- Black matt plastic fitter base for post or wall mounting
- Suitable for 1 x ES lamp, ceramic lampholder
- Suitable for EX2001 sphere posts

Fitting

Product Code	Ref Number	Watts	Size(mm)	Lamp Included
22206	EXPC2000	28w	Ø200	No
22209	EXPC2500	42w	Ø250	No
22212	EXPC3000	52w	Ø300	No
22215	EXPC4000	70w	Ø400	No





The intelligent DALI Emergency Lighting Monitoring System with **'One Click' Commissioning**

RAPIX Emergency is a complete emergency monitoring solution that is simple to use, provides ease of operation and ensures compliance obligations are fulfilled. Suitable for use in all projects where Emergency Monitoring is required from smaller residential fit-outs to the largest commercial installations.



Totally scalable for small, medium and large installations.

RAPIX Emergency





Metal Halide
MHP Double
Jacketed Lamp



E40 Base Double Jacketed Lamp Replacement Complies to the Australian Standard

(AS/NZS60598.2.1 :2013, Appendix ZZ, Clause 3.3.7)

that calls for all Metal Halide Highbays to be securely covered with a protective visor or use a Double Jacketed lamp.

SYLVANIA have the solution with the new Double Jacketed Metal Halide lamps. Designed as a simple lamp replacement for any existing open or enclosed Metal Halide Luminaire using a conventional E40 lamp base.

Product Code	Sylvania No.	Description	Dimensions	Base
MHP250WCOUDJ	644870P	250w MH CO double jacketed	90 dia x 211 MOL 127 LCL	E40
MHP250WCLUDJ	644860P	250w MH CL double jacketed	90 dia x 211 MOL 127 LCL	E40
MHP400WCOUDJ	645060P	400w MH CO double jacketed	120 dia x 278 MOL 178 LCL	E40
MHP400WCLUDJ	644900P	400w MH CL double jacketed	120 dia x 278 MOL 178 LCL	E40

GERARD

L I G H T I N G

 **1300 799 300**

Head Office

96-112 Gow Street
Padstow NSW 2211

State Offices

NSW	02 9794 9393
QLD	07 3621 9200
VIC/TAS	03 8394 3100
SA/NT	08 8122 2360
WA	08 9209 7100

www.gerardlighting.com.au



SYLVANIA

