



## SQUARE SE7064 - 8W

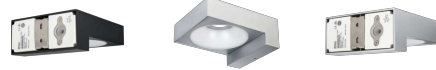
Decorative square profile IP65 architectural LED wall mount luminaire

### Application

A decorative architectural solution for residential, commercial interior or exterior spaces

### Design Specifications

- Colour temperature 3000K
- Durable black or stylish silver powder coated finish
- Integral non-dimmable control gear 8 watt
- Robust die-cast aluminium body profile
- High efficiency SMD LED, CRI >80



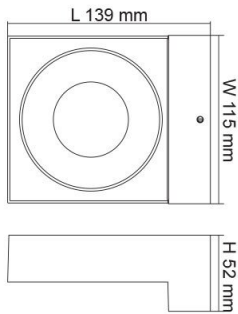
### Technical Specification

Model No.	Input Voltage (V/AC)	Power (W)	Lumens (lm)	CCT (K)	CRI	Dim (mm)
SE7064WW/BK	240	8	600	3000	80	139(L) x 115(W) x 52(H)
SE7064WW/SL	240	8	600	3000	80	139(L) x 115(W) x 52(H)

Model No.	Body Colour
SE7064WW/BK	BLACK
SE7064WW/SL	SILVER

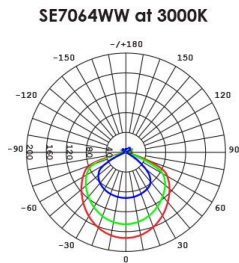
Due to continued product and technology enhancements, data sourced from sal.net.au shall not form part of any contract and or technical performance guarantee unless expressly confirmed in writing by SAL at the time of order. Products are sold in accordance with [SAL Terms and Conditions of sale](#) and all images shown are for illustration purposes only and may vary from the actual colour or finish. Unless specifically stated, all IP ratings nominated for Interior products are from "below the ceiling".

## Dimensions



## Photometric Data

Unit: cd C0/C180 — C30/C210  
cd C60/C240 — C90/C270





Why is the IP rating important? In brief, IP (Ingress Protection) ratings are defined in EN 60529 and simply defines the ability of an electrical product to seal and protect against the intrusion of foreign objects and water.

(I) As the first numeral stands for intrusion of a foreign object, where (P) as the second numeral stands for the penetration of moisture.

As a guide IP20 rated products would be seen in interior spaces with no requirement for protection against the elements, where an IP65 product would be found in an exterior application which required substantial protection against the elements.

*Need more information on IP ratings? Check out the SAL web FAQ's or speak to your local SAL team member.*

**For more  
information  
please  
scan me**

