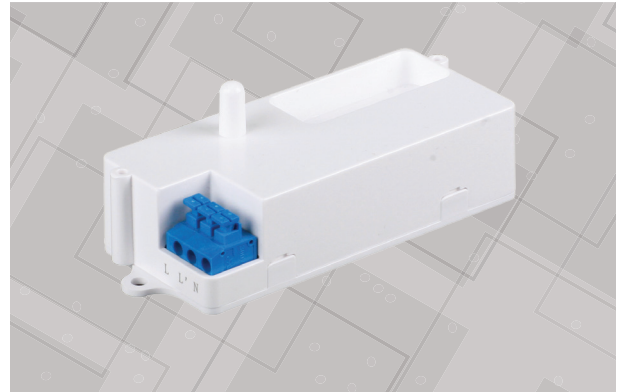


MICROWAVE MOTION SENSORS

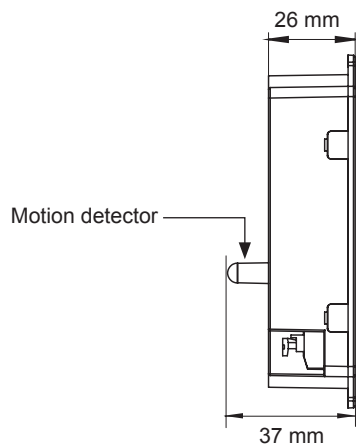
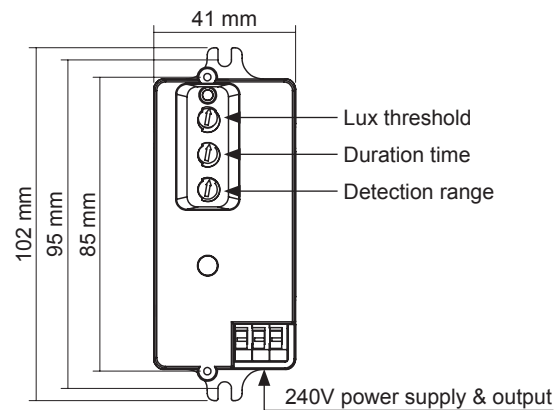
SMS810 SENSOR

- This can be installed as an option in a range of SAL fittings

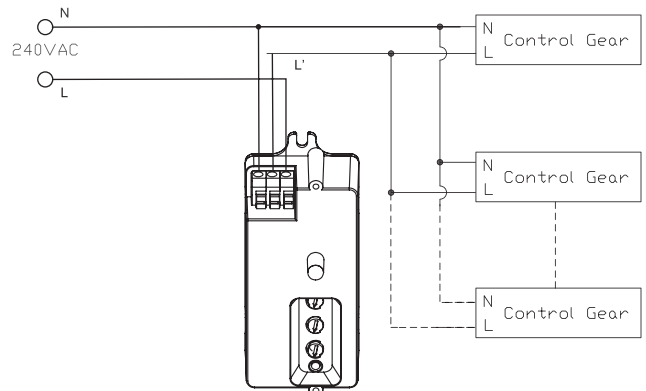
Operating voltage	240V
Switched power	1000W incandescent, 300W Fluorescent, 200W LED
Standby power	<1W
Detection distance	Max. 16 m in diameter
Detection range	0 ~ 100% adjustable
Detection angle	360°
Duration Time	10 sec to 10 mins adjustable
Lux threshold	Dawn to dusk adjustable
Sensor principle	Microwave motion detector
Material	PC
Microwave power	<1mW
Assembly type	Inbuilt
Mounting height	Max. 8 m
Operating temperature	-15° ~ +70°C
IP rating	IP20



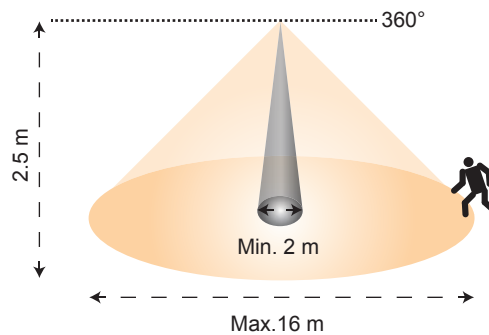
DIMENSIONS



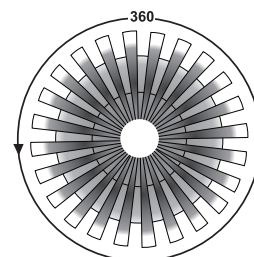
WIRING DIAGRAM



DETECTION RANGE



DETECTION ANGLE



Model No.	Input	Power	Detection Range	IP Rating	Type	Mounting	Colour
SMS810	240V	200W	16 m max. at 2.5 m	IP20	Microwave	Integral	White

