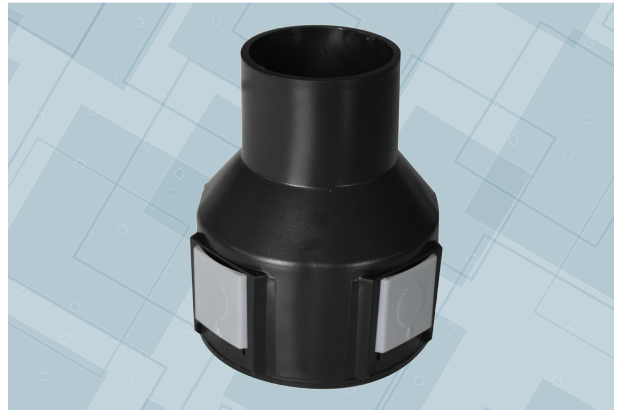
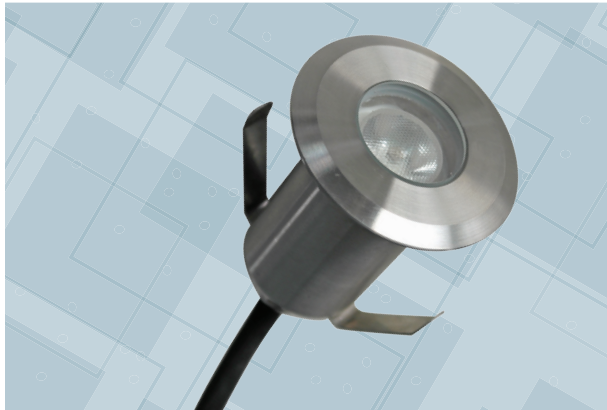
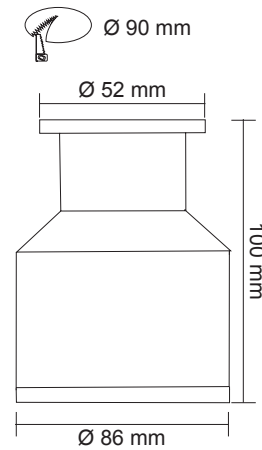
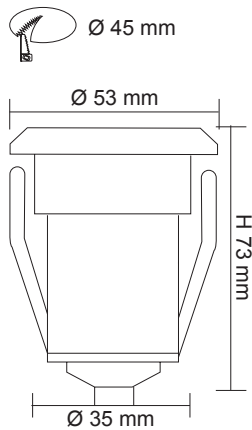


LED INGROUND LIGHT

SL7362 GLOW



DIMENSIONS



CONSTRUCTION

- Durable stainless steel body
- Clear tempered glass diffuser
- Frosted optical LED lens
- High output LED chips
- 1 m 2 core rubber flex
- IP67 nickel plated copper cable gland
- Silicon gasket
- PVC installation cannister included
- 12V DC constant voltage driver required

SUITABLE LED DRIVERS

- PLUTO 30/12V
- PLUTO 100/12V
- PLUTO 200/12V

Model No.	Power	Lumen	CCT	Beam Angle	CRI	Dimmable
SL7362WW/SLS	3W	300lm	3000K	15°	>80	No