



NEW FLINDERS POST SE7061 - 6W

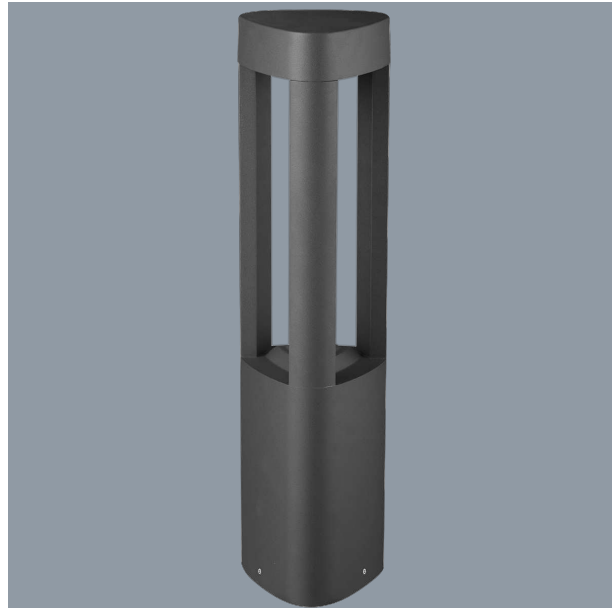
LED architectural post luminaire

Application

Functional and decorative exterior pathway bollards

Design Specifications

- Extruded aluminium body
- Durable powder coated finish
- Opal polycarbonate diffuser
- GX53 LED lamp included or integral low voltage SMD LED chips (12V AC or DC driver required)



Technical Specification

Model No.	Input Voltage (V/AC)	Input Voltage (V/DC)	Power (W)	Lumens (lm)	CCT (K)	Dim (mm)
SE7061/800 BK	240		6	450	6000	125(W) x 800(H)
SE7061/800 LV BK	12	12	6	500	6000	125(W) x 800(H)

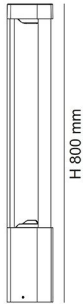
Model No.	Base Type	Body Colour
SE7061/800 BK	GX53	BLACK
SE7061/800 LV BK		BLACK

Due to continued product and technology enhancements, data sourced from sal.net.au shall not form part of any contract and or technical performance guarantee unless expressly confirmed in writing by SAL at the time of order. Products are sold in accordance with [SAL Terms and Conditions of sale](#) and all images shown are for illustration purposes only and may vary from the actual colour or finish. Unless specifically stated, all IP ratings nominated for Interior products are from "below the ceiling".



Dimensions

SE7061/800





Why is the IP rating important? In brief, IP (Ingress Protection) ratings are defined in EN 60529 and simply defines the ability of an electrical product to seal and protect against the intrusion of foreign objects and water.

(I) As the first numeral stands for intrusion of a foreign object, where (P) as the second numeral stands for the penetration of moisture.

As a guide IP20 rated products would be seen in interior spaces with no requirement for protection against the elements, where an IP65 product would be found in an exterior application which required substantial protection against the elements.

Need more information on IP ratings? Check out the SAL web FAQ's or speak to your local SAL team member.

**For more
information
please
scan me**

