



ALTONA PLUS SE7357 - 8W

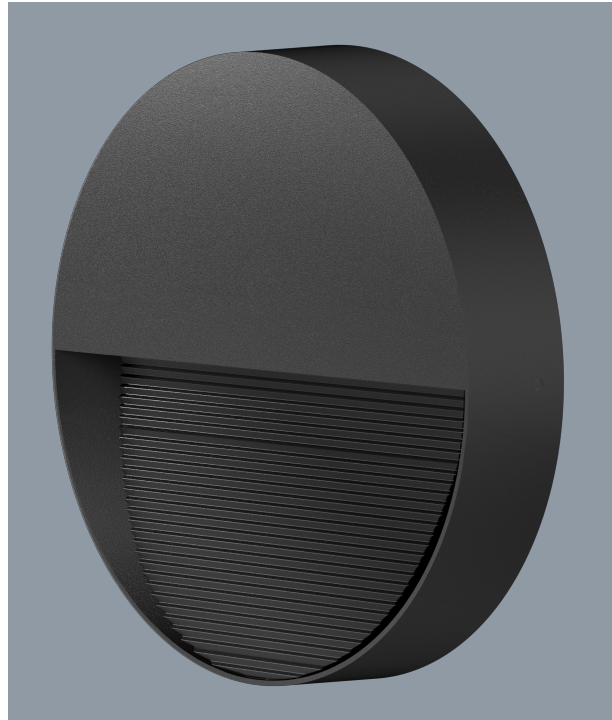
LED 8 watt surface mount circular profile wall luminaire

Application

Residential stairs, walkways and interior commercial features

Design Specifications

- Durable aluminium body profile
- Quality matt black powder coat finish
- High efficiency SMD LED chips
- CCT 3000K or 5000K
- Beam distribution 70°
- Integral control gear



Technical Specification

Model No.	Input Voltage (V/AC)	Power (W)	Lumens (lm)	CCT (K)	CRI	Beam Angle (°)
SE7357WW/BK	240	8	350	3000	80	70
SE7357NDL/BK	240	8	500	5000	80	70

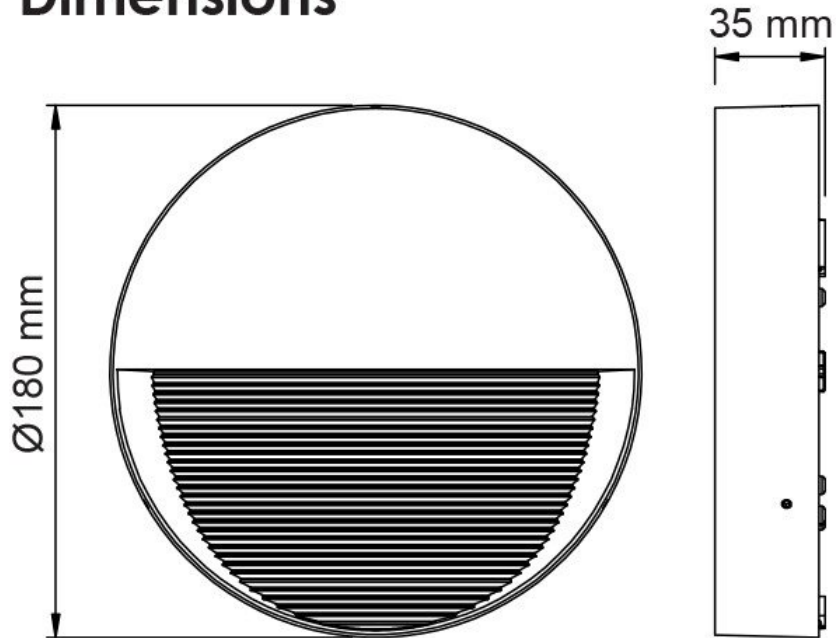
Technical Specification

Model No.	Diameter (mm)	Dim (mm)
SE7357WW/BK	180	35(H)
SE7357NDL/BK	180	35(H)

Due to continued product and technology enhancements, data sourced from sal.net.au shall not form part of any contract and or technical performance guarantee unless expressly confirmed in writing by SAL at the time of order. Products are sold in accordance with [SAL Terms and Conditions of sale](#) and all images shown are for illustration purposes only and may vary from the actual colour or finish. Unless specifically stated, all IP ratings nominated for Interior products are from "below the ceiling".

Dimensions

Dimensions





Photometric Data

Photometric Data

Unit: cd C0/C180 _____ C90/C270 _____

SE7357WW at 3000K

