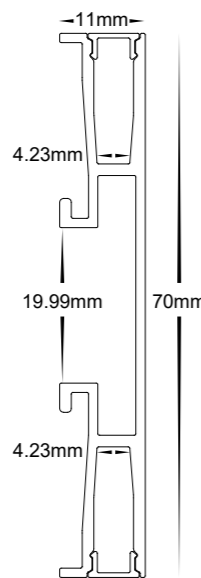
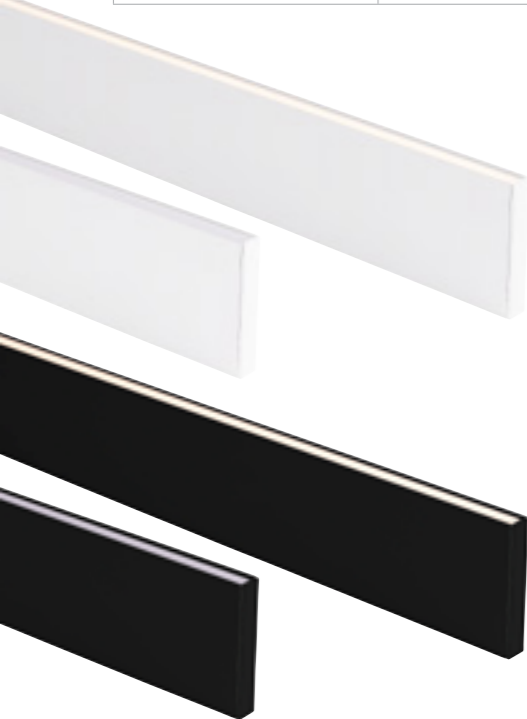


Side Mount LED Profile

- Side Mount LED Profile
- UV Stabilised PC diffuser



PART NUMBER	DESCRIPTION	IP RATING	MAX LENGTH
HV9694-1145-BLK	11mm x 45mm Black side mounted profile with UV Stabilised PC diffuser	IP20	3 metres
HV9694-1145-BLK-3M	3m Length includes aluminium, diffuser + 6x end caps & 6x mounting clips	IP20	3 metres
HV9694-1145-WHT	11mm x 45mm White side mounted profile with UV Stabilised PC diffuser	IP20	3 metres
HV9694-1145-WHT-3M	3m Length includes aluminium, diffuser + 6x end caps & 6x mounting clips	IP20	3 metres



Up & Down Side Mount LED Profile

- Up & Down Side Mount LED Profile
- UV Stabilised PC diffusers

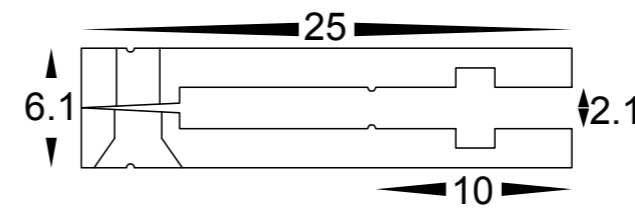


PART NUMBER	DESCRIPTION	IP RATING	MAX LENGTH
HV9694-1170-BLK	11mm x 70mm Black up/down side mounted profile with UV Stabilised PC diffuser	IP20	3 metres
HV9694-1170-BLK-3M	3m Length includes aluminium, diffuser + 6x end caps & 6x mounting clips	IP20	3 metres
HV9694-1170-WHT	11mm x 70mm White up/down side mounted profile with UV Stabilised PC diffuser	IP20	3 metres
HV9694-1170-WHT-3M	3m Length includes aluminium, diffuser + 6x end caps & 6x mounting clips	IP20	3 metres

All low voltage products that specify an input of 12v or 24v DC must be used with a suitable LED driver, refer to pages 267 - 274
Lumen output measured at source. All globes supplied with fittings are non dimmable. If you require 240v dimmable globes refer to page 336

Side Mount LED Profile

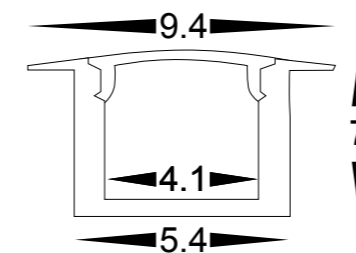
- Slim side mounted square profile
- UV Stabilised PC diffuser



PART NUMBER	DESCRIPTION	IP RATING	MAX LENGTH
HV9694-0625	6mm x 25mm Side Mounted square profile with UV Stabilised PC diffuser	IP20	3 metres
HV9694-0625-2M	2m Length includes aluminium, diffuser + 4x end caps	IP20	3 metres

Micro Winged LED Profile

- Shallow micro winged square profile
- UV Stabilised PC diffuser
- Suitable for recessed installation



PART NUMBER	DESCRIPTION	IP RATING	MAX LENGTH
HV9695-0907	9mm x 7mm Micro winged square profile with UV Stabilised PC diffuser	IP20	3 metres
HV9695-0907-3M	3m Length includes aluminium, diffuser + 6x end caps	IP20	3 metres

All low voltage products that specify an input of 12v or 24v DC must be used with a suitable LED driver, refer to pages 267 - 274
Lumen output measured at source. All globes supplied with fittings are non dimmable. If you require 240v dimmable globes refer to page 336