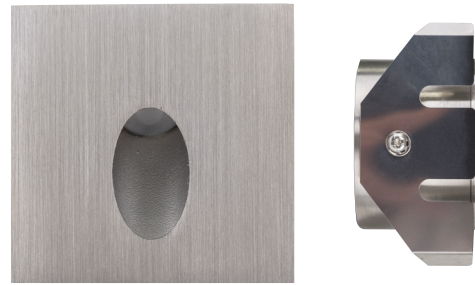


Recess 316 Stainless Steel Recessed Wall Light

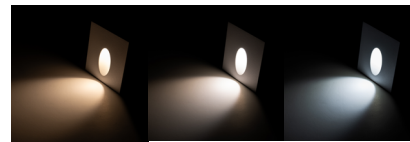
Name	Reces & Mini Reces
Material	316 Stainless Steel
Colour	Stainless Steel
IP Rating	IP67
Colour Temp	<div style="display: flex; gap: 5px;"> <div style="width: 10px; height: 10px; background-color: #FFD700; border: 1px solid black;"></div> 3000k <div style="width: 10px; height: 10px; background-color: #ADD8E6; border: 1px solid black;"></div> 4000k <div style="width: 10px; height: 10px; background-color: #00CED1; border: 1px solid black;"></div> 5500k </div>
IK Rating	IK10
Installation Type	Wall - Recessed
Diffuser Type	Frosted Glass
Lamp Base	Built in LED
Max Wattage	2.5w or 1w
Protection Class	3 (Low Voltage - No Earth Required)
Lamp Expectancy	<30,000hrs*
CRI	CRI>80
SDCM	<6
UGR	<17
Dimmable	Yes - Triac Dimmable
Warranty	3 Years Replacement*



HV3215T-SS316-12V



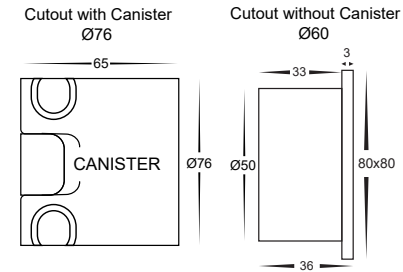
HV3216T-SS316-12V



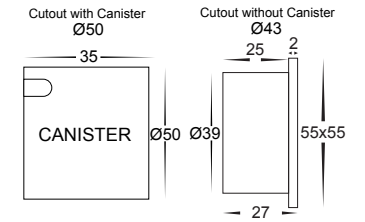
Product Ordering

Image	Part Number	Colour Temp	Lumens	Input Voltage	Beam Angle	Included LED	Barcode
	HV3215T-SS316-12V	<div style="display: flex; gap: 5px;"> <div style="width: 10px; height: 10px; background-color: #FFD700; border: 1px solid black;"></div> 3000K <div style="width: 10px; height: 10px; background-color: #ADD8E6; border: 1px solid black;"></div> 4000K <div style="width: 10px; height: 10px; background-color: #00CED1; border: 1px solid black;"></div> 5500K </div>	180lm 185lm 190lm	12v DC	40°	TRI Colour 2.5w Built in LED	9350418028020
	HV3216T-SS316-12V		55lm 57lm 60lm			TRI Colour 1w Built in LED	9350418028051

HV3215T-SS316-12V Dimensions



HV3216T-SS316-12V Dimensions



Optional Havit Compatible Accessories

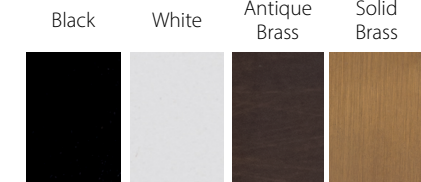
Image	Part Number	Description
Triac Dimmer + Drivers		
	HV9625	Triac Dimmer to suit Triac Dimmable Drivers
	12v DC Non Dimmable LED Drivers	See Catalogue or Website for full range of Non Dimmable 12v DC LED Drivers
	12v DC Triac Dimmable LED Drivers	See Catalogue or Website for full range of 12v DC Triac Dimmable LED Drivers
Dali Relay Modules		
	HV9107-2303SAC-HP	Dali Dimmable Relay Module to be used with Triac Dimmable LED Drivers when Dali Control is required
	HV9107-27015-N	Dali On-Off Relay Module to be used with Non Dimmable LED Drivers when Dali Control is required
Maintenance Kit		
	HV9971	Stainless Steel Maintenance Kit

Related Products

[HV3205T-SS316-12V](#) [HV3206T-SS316-12V](#)



Other Available Colours



Havit Lighting 143 Beauchamp Road, Matraville, N.S.W. 2036 | Phone: 02 9381 8300 | Fax: 02 9381 6661 | Email: sales@havit.com.au | Web: www.havit.com.au

*See Warranty Terms & Conditions for more information