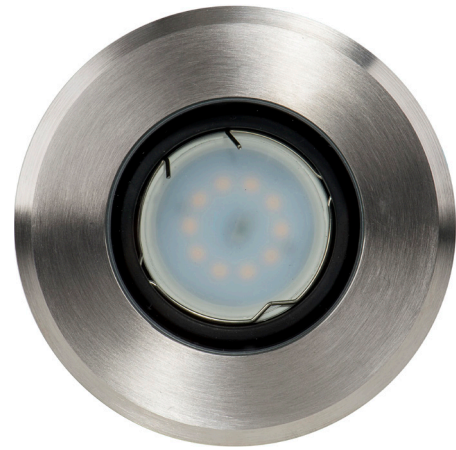


# Luta 316 Stainless Steel Round Inground Light



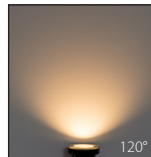
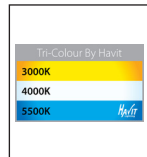
## Product Specifications

Name	Luta
Material	316 Stainless Steel + Aluminium
Colour	Stainless Steel Face + Black Body
Tilt	30°
IP Rating	IP67
IK Rating	IK10
Installation Type	Inground
Trafficable	500kg
Cable Length	300mm
Lamp Base	MR16
Max Wattage	20w MR16
Protection Class	3 (No Earth Required)
Lamp Expectancy	<30,000hrs
Diffuser Type	Clear Glass
CRI	CRI>80
Dimmable	No - Not with supplied globes
Warranty	3 Years Replacement*



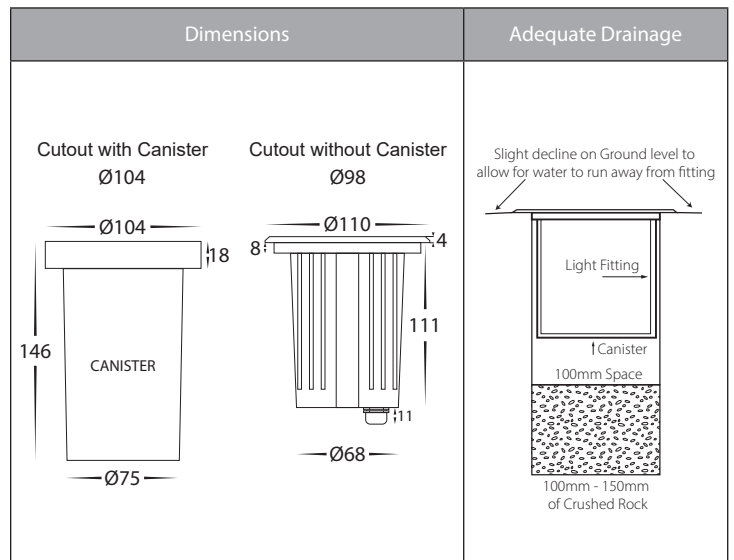
Anti Siphon Valve

Male +Female Connector



## Optional Havit Compatible Accessories

Image	Part Number	Colour Temp	Input Voltage	Beam Angle	Included LED
	HV9507	3000k	12v DC	60°	<b>TRI Colour</b> 3/5/7w MR16 LED
	HV9508	4000k 5500k	24v DC		
	HV9971	Stainless Steel Maintenance Kit - Kit includes rejuvenating paste + Spray for final protection coating			
	12v DC LED Drivers	See Catalogue or Website for full range of 12v DC LED Drivers			



## Product Ordering

Part Number	Colour Temp	Lumens	Input Voltage	Beam Angle	Included LED	Barcode
<b>HV1825T</b>	3000k 4000k 5500k	270lm 285lm 300lm	12v DC	120°	<b>TRI Colour</b> 5w MR16 LED	9350418016348

\*Items ordered after 01-01-2022

