

EMIT-85-TRIO-BRS

Tri-Colour Inground Light - Brushed Brass



Description

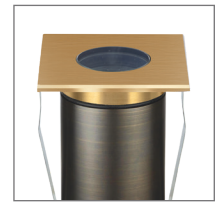
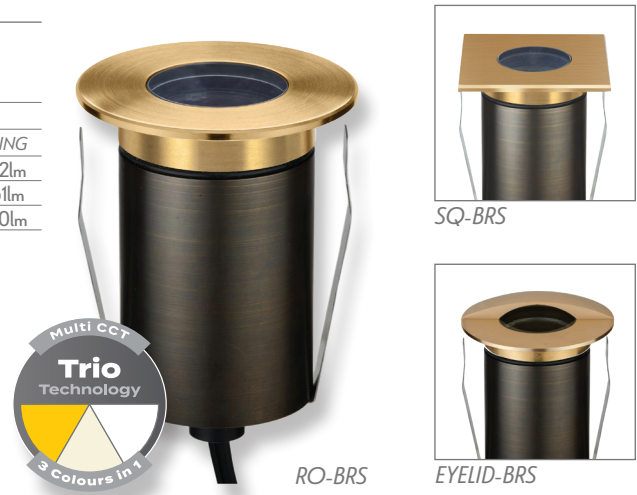
Introducing the EMIT-85 LED Inground Light Series. The EMIT-85 is a 85mm overall diameter inground light with a cutout of 65mm without cannister, ideal for lighting up features where minimalistic light effects are required. Featuring a 4W/6W LED output, with a range of different fascia plates and metalware colour options. Choose from Round Open, Square Open, Eyelid and Halo fascias, as well as the multiway fascias available in 1WAY, 2WAY, 3WAY, and 4WAY. Metalware colour options range from Black, Stainless Steel, Antique Brass and Brushed Brass. Tri-Colour Selectable: Choose from 3000K Warm White, 4000K Neutral White and 5500K White colour temperature options. Functional with 12 and 24V DC Constant Voltage LED Drivers. Optional extra accessories such as narrow to medium Beam Angle Lens as well as Honeycomb, Linear Lens and opal diffuser are also available. Part of a family of different sizes to suit most inground lighting applications. Backed by a 5 Year Replacement Warranty.

Specification Features

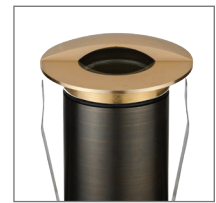
Input Voltage:	12/24V DC								
Power (W):	4W/6W								
IP rating (IP):	IP67								
IK Rating (IK):	IK10								
Lumens	RND OPEN	SQR OPEN	EYELID	1 WAY	2 WAY	3 WAY	4 WAY	HALO	RING
3000K	406lm	406lm	226lm	29lm	52lm	38lm	47lm	28lm	52lm
4000K	460lm	460lm	266lm	33lm	62lm	43lm	54lm	33lm	61lm
5500K	453lm	453lm	253lm	32lm	60lm	43lm	54lm	32lm	60lm

LED type: CREE
 CCT: 3000K-4000K-5500K (Switchable)
 CRI: ≥90
 Beam angle (°): 19° - 36° - 60° (36° Standard)
 Dimmable: No
 Lifespan (hrs): 50,000hrs
 Cutout (Ø): Ø65mm Without Cannister
 Ø82mm With Cannister

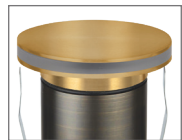
Requires 12 or 24V Constant Voltage LED Driver (Wire in Parallel)
 Compatible with an AC/DC driver. A Domus DC driver is recommended



SQ-BRS



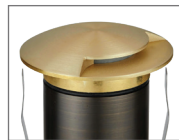
EYELID-BRS



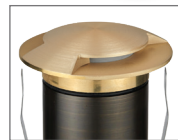
HALO-BRS



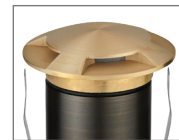
RING-BRS



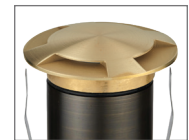
1WAY-BRS



2WAY-BRS



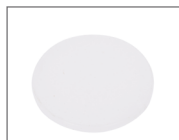
3WAY-BRS



4WAY-BRS



Honeycomb (Optional)
 Variant: 10173



Opal Diffuser (Optional)
 Variant: 10167



Linear Lens (Optional)
 Variant: 10168



19° Lens (Optional)
 Variant: 10169



60° Lens (Optional)
 Variant: 10171



Water Stop Cable Joint

Item No.	Variant									CCT
	RND OPEN	SQR OPEN	EYELID	1 WAY	2 WAY	3 WAY	4 WAY	HALO	RING	
EMIT-85-TRIO-BRS	10195	10196	10197	10198	10199	10200	10201	10202	10203	TRIO

Diagrams / Additional

