

EMIT-85-RGBW-BRS

RGBW Inground Light - Brushed Brass



Description

Introducing the EMIT-85 LED Inground Light Series. The EMIT-85 is a 85mm overall diameter inground light with a cutout of 65mm without cannister, ideal for lighting up features where minimalistic light effects are required. Featuring a 6W LED output, with a range of different fascia plates and metalware colour options. Choose from Round Open, Square Open, Eyelid and Halo fascias, as well as the multiway fascias available in 1WAY, 2WAY, 3WAY, and 4WAY. Metalware colour options range from Black, Stainless Steel, Antique Brass and Brushed Brass. RGBW Selectable: Choose from 3000K Warm White, 4000K Neutral White and 5500K White colour temperature options. Functional with a 24V DC Constant Voltage LED Drivers. Optional extra accessories such as narrow to medium Beam Angle Lens as well as Honeycomb, Linear Lens and opal diffuser are also available. Part of a family of different sizes to suit most inground lighting applications. Backed by a 5 Year Replacement Warranty.

Specification Features

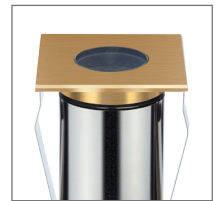
Input Voltage:	24V DC
Power (W):	6W
IP rating (IP):	IP67
IK Rating (IK):	IK10
LED type:	CREE
CCT:	RGBW
CRI:	≥90
Beam angle (°):	19° - 36° - 60° (36° Standard)
Dimmable:	No
Lifespan (hrs):	50,000hrs
Cutout (Ø):	Ø65mm Without Cannister Ø82mm With Cannister

Requires RGBW Colour Controller (Suggested Controller - CHAM-BT-RF-5C 20141)

Requires a 24V Constant Voltage LED Driver (Wire in Parallel)



RO-BRS



SQ-BRS



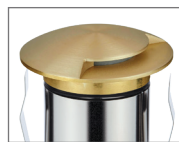
EYELID-BRS



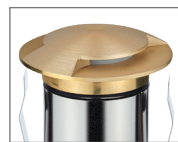
HALO-BRS



RING-BRS



1WAY-BRS



2WAY-BRS



3WAY-BRS



4WAY-BRS



Honeycomb (Optional)
Variant: 10173



Opal Diffuser (Optional)
Variant: 10167



Linear Lens (Optional)
Variant: 10168



19° Lens (Optional)
Variant: 10169



60° Lens (Optional)
Variant: 10171



Water Stop Cable Joint

Item No.	Variant								CCT	
	RND OPEN	SQR OPEN	EYELID	1WAY	2WAY	3WAY	4WAY	HALO		RING
EMIT-85-RGBW-BRS	10235	10236	10237	10238	10239	10240	10241	10242	10243	RGBW

Diagrams / Additional

