

## ZEKE-MINI-RD

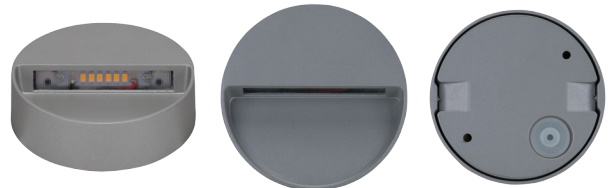
### Steplight



### Description

The surface mounted ZEKE-MINI Round LED wall/step light features a slim-line, cast-aluminium body and cable gland for easy installation. The aluminium trim features a special chromate process before a polyester powder coated finish is applied, for extended wear in harsh external environments.

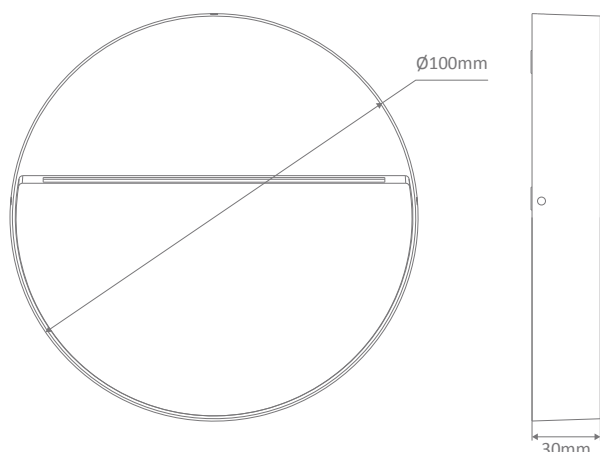
With an IP54 rating, the ZEKE-MINI Round features amazing downward illumination with minimal power consumption; A total of 3W of high intensity illumination. Particularly useful for external pathways and steps or any area in which recessed mounting is not an option. The ZEKE-MINI Round is also backed by our Three Year Replacement Warranty for peace of mind.



### Specification Features

Input Voltage:	240V AC
Power (W):	3W
IP rating (IP):	54
Lumens (lm):	Warm White 3000K - 300lm White 5000K - 350lm
LED type:	SMD
CCT:	3000K - 5000K
CRI:	≥80
Dimmable:	No
Lifespan (hrs):	50,000hrs

### Diagrams / Additional



- Order Code: 19700
- Product Code: ZEKE-MINI-RND-SLR-WW
- Order Code: 19701
- Product Code: ZEKE-MINI-RND-SLR-W
- Order Code: 19702
- Product Code: ZEKE-MINI-RND-DGR-WW
- Order Code: 19703
- Product Code: ZEKE-MINI-RND-DGR-W
- Order Code: 19704
- Product Code: ZEKE-MINI-RND-WHT-WW
- Order Code: 19705
- Product Code: ZEKE-MINI-RND-WHT-W