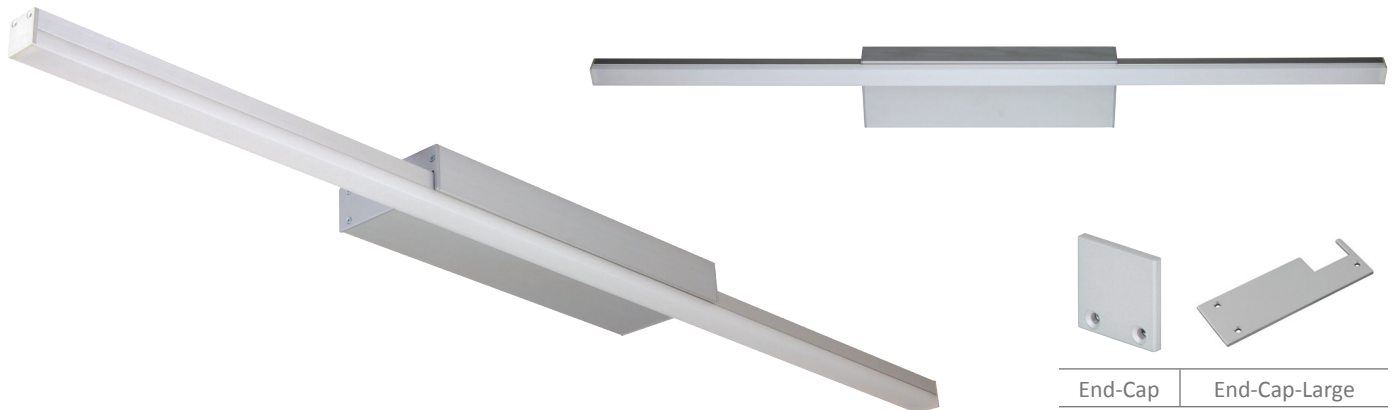




SHADOW-LINE LED Mounting Profile

Description

Introducing the SHADOW-LINE LED mounting profile. The SHADOW-LINE is a unique mounting profile unlike others offered on the market. Gone are the days of the traditional wall mounted vanity light, wall light or even picture light where you were limited by traditional light sources. The SHADOW-LINE offers a slick new modern look with all the features offered by traditional light sources. Continuous lengths of up to 2.5mtrs are able to be realised.



Specification Features

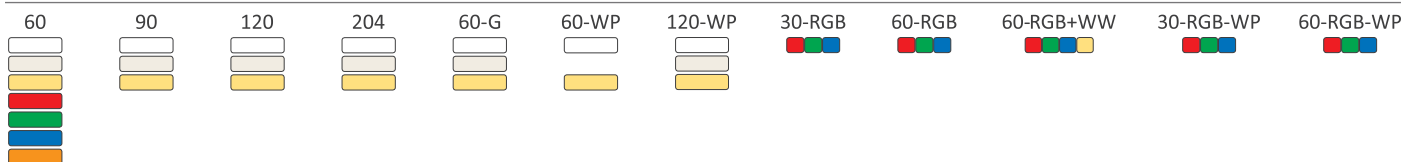
Installation:	Wall mounted
Material:	Extruded aluminium 6063
Finish:	Natural clear anodised
Diffuser:	Square (PMMA) Opal colour
Length (mm):	2500mm continuous*
Size (mm):	Profile (W) 80mm (H) including diffuser 36mm
Accessories (each):	End caps anodised finish**
Special:	Custom powder coated colour upon request***
Driver Installation:	Remote driver or integral driver**** (not included)

* Profile sold per meter. Can be cut to suit any length.
 ** Accessories to be ordered separately.
 *** Special powder coat finishes upon request. Surcharges apply.
 **** For integral drivers use: SLIM-30, SLIM-60, SLIM-80
 (12 OR 24V DC options, min back plate size 250mm, 30W, 350mm, 60W & 80W)

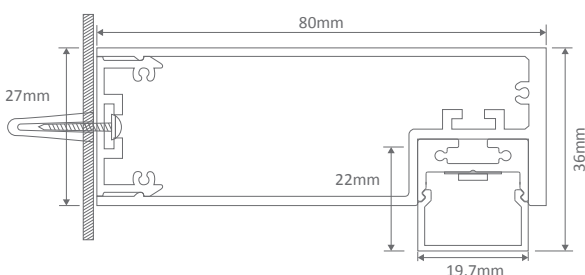
Order Info:

Product Code:	SHADOW-LINE
Order Code:	22016
Sold per (m)	1mtr
Product Code:	BOBBY-BLOC-CAP
Order Code:	22011
Colour:	Silver finish
Sold per (m)	Each
Product Code:	SHADOW-LINE-CAP-LARGE
Order Code:	22017
Colour:	Natural anodised
Sold per (each):	Each

Compatible LED Strip Lighting



Diagrams / Additional



LED Output Variance:

