

EV-PLATE

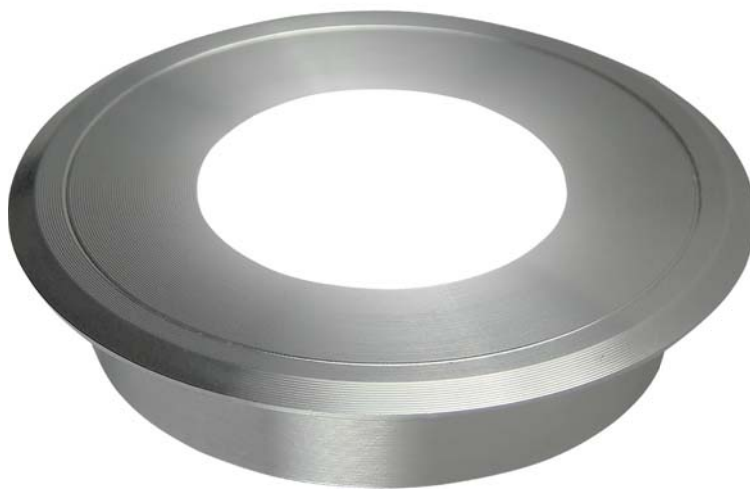
LED Inground Lights
Technical data sheet

DESCRIPTION

The PLATE is a new introduction into our range of exterior recessed garden and path lighting.

The PLATE features a fully machined single piece 316 stainless steel body and trim and opal diffuser. The light is provided by 3 x SMD LEDs which offer a subtle effect. Part of the feature of the PLATE lies in its super slim mounting depth. In many situations the depth of the fitting is no deeper than the floor tile or even decking boards. This makes it perfect for areas of restricted mounting depths.

Applications for the PLATE include pathways, decks, in home applications around pools and marking lights in commercial spaces.



SPECIFICATION FEATURES

Power: 0.6W total power
Beam Angle: 120°
Colour Range: W / WW / RGB
Efficacy: Warm White 35lm/W, White 55lm/W
Materials: 316 stainless steel
Design: Anti-dazzle
Size: Ø45mm x 10mm
IP Rated: IP65
Lifetime: 50 000 hours
Warranty: 3 years
Approvals: CE, RoHS
Driver: Requires 12V DC driver (RGB require colour controller)

PRODUCT CODES

Product code: EV-PLATE-W
Order code: 21306
Colour: ■ White LED 6400K

Product code: EV-PLATE-WW
Order code: 21307
Colour: ■ Warm White LED 3200K

Product code: EV-PLATE-RGB
Order code: 21312
Colour: ■ RGB LED

IP65 

DIAGRAMS

