

CHAM-06

Single Channel 0-10V LED Interface



RoHS

Description

The CHAMELEON-06 is an interface designed for 0-10V signals. Designed for use with constant voltage 12-24VDC lighting products the CHAMELEON-06 offers seamless integration between automation systems and luminaires. Accepts standard 0-10V signal generated from any automation system. Featuring 1CH of dimming allowing control over single colour LED lighting products.

For manual dimming control for situations where an automation system is not used a resistive pot can be used. These low voltage 0-10V dimmers are designed to fit into standard HPM or Clipsal switch plates.

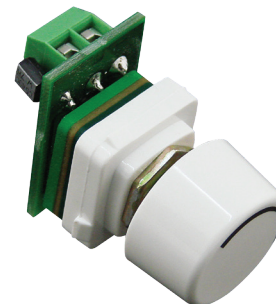


Specification Features

Type of interface:	1CH controller
Method of control:	0-10V*
Method of dimming:	PWM (Pulse width modulation)
Housing colour:	Black plastic colour housing
Housing size (mm):	(L) 168 x (W) 58 x (H) 28mm
Input voltage (VDC):	12-24VDC
Output voltage (VDC):	12-24VDC
Output current (A):	1x8A
Output wattage (W):	12VDC-96W per channel. (x1) 24VDC-192W per channel. (x1)
Expandable signal:	Yes**
Requires:	Constant voltage 12-24VDC LED driver***

* Accepts signal generated from automation systems. For applications where 1CH manual adjustments are needed the use of a resistive pot such as the (20303) allows the user to manually adjust the colour.
 ** 1CH data repeater recommended for single colour applications CHAM-25 (20134) not included.
 *** Constant voltage LED driver required (not included) product dependant.

Order Code: 20115
 Product Code: CHAM-06
 Description: 1CH 0-10V interface



Diagrams / Additional



HPM Version

Order Code: 20302
 Product Code: DIM-POD-HPM
 Description: 0-10 Dimming pod (not for 240VAC usage)

Clipsal Version

Order Code: 20303
 Product Code: DIM-POD-CLIP
 Description: 0-10 Dimming pod (not for 240VAC usage)

