

Solid Copper Recessed Step Light/Inground

- Recessed wall/step light
- Solid copper face with marine grade 316 stainless steel body
- Tempered glass
- Trafficable to 1000kg
- Installation depth needed: 125mm
- **NOTE: adequate drainage must be allowed**
- IP rating: IP65

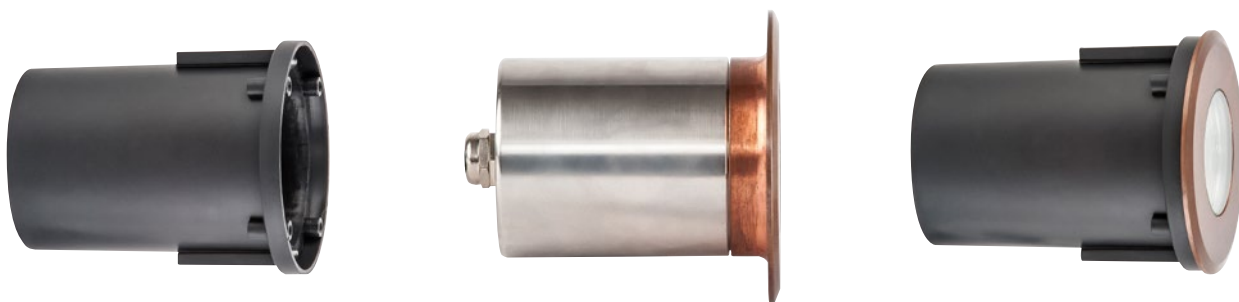
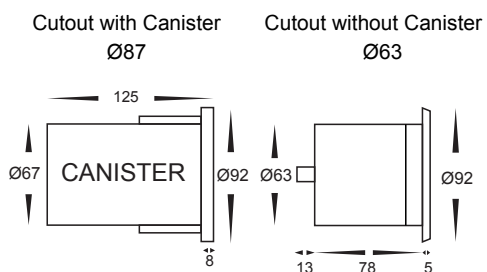


IMAGE	PART NUMBER	COLOUR TEMP	OUTPUT	POWER	INCLUDED GLOBES
	HV19022C-CP	Cool white, 6000k	300lm	12v DC LED 5w	5w MR16 LED globe
	HV19022W-CP	Warm white, 3000k	250lm	12v DC LED 5w	5w MR16 LED globe

All low voltage products that specify LED or are supplied with a 12v DC LED globe must be used with a suitable LED driver, refer to pages (185 - 206)
Lumen output measured at source. All globes supplied with fittings are non dimmable. If you require 240v dimmable globes refer to pages (257 - 258)