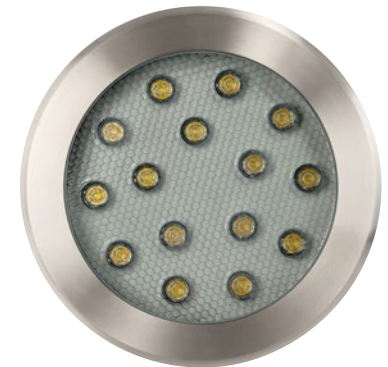
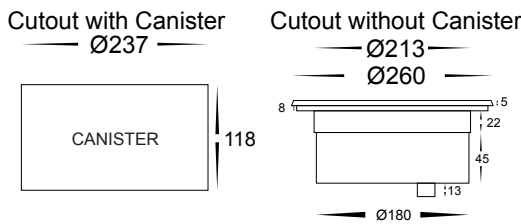
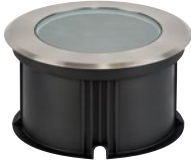


# 316 Stainless Steel 18w LED In-ground Uplighters Round

- In-ground uplighter round
- Stainless steel 316 marine grade cover
- Full stainless steel body
- Anti glare honeycomb louvre
- Beam angle: 60°
- Flush tempered glass
- Trafficable to 1000kg
- Face diameter: 260mm
- Installation depth: 118mm
- **NOTE: adequate drainage must be allowed**
- IP Rating: IP67



| IMAGE   | PART NUMBER    | COLOUR TEMP       | OUTPUT | POWER          | INCLUDED GLOBES  |
|---|----------------|-------------------|--------|----------------|------------------|
|  | <b>HV1845C</b> | Cool white, 6000k | 1350lm | 12v DC LED 18w | Built in 18w LED |
|   | <b>HV1845W</b> | Warm white, 3000k | 1200lm | 12v DC LED 18w | Built in 18w LED |

All low voltage products that specify LED or are supplied with a 12v DC LED globe must be used with a suitable LED driver, refer to pages (185 - 206)  
Lumen output measured at source. All globes supplied with fittings are non dimmable. If you require 240v dimmable globes refer to pages (257 - 258)