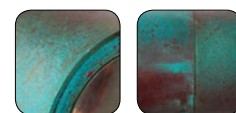
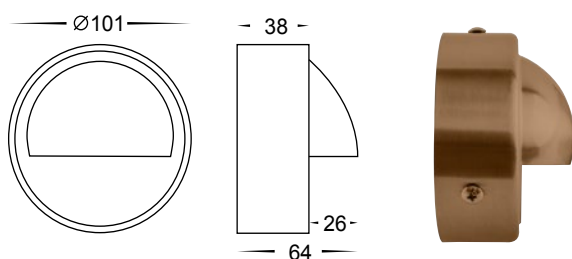


Copper Surface Mounted Eyelid Lights

- Surface mounted eyelid (step light)
- Extra large eyelid design to maximise light output
- Solid copper cover
- Fast weathering for classic aged appearance
- Matt finish
- Frosted tempered glass
- IP Rating: IP54



Weathered Copper

IMAGE	PART NUMBER	COLOUR TEMP	OUTPUT	POWER	INCLUDED GLOBES
	HV2916	NA	NA	240v G9 Max 25w	Not supplied with globe
	HV2917	NA	NA	12v G4 Max 20w	Not supplied with globe
	HV2918C	Cool white, 6000K	180lm	240v LED 2.3w	Built-in SMD 2.3w LED
	HV2918W	Warm white, 3000K	160lm	240v LED 2.3w	Built-in SMD 2.3w LED
	HV2919C	Cool white, 6000K	180lm	12v DC LED 2.3w	Built-in SMD 2.3w LED
	HV2919W	Warm white, 3000K	160lm	12v DC LED 2.3w	Built-in SMD 2.3w LED

Optional Havit compatible G9 LED globe HV9511W

Optional Havit compatible G4 LED globe HV9529-3.2w

All low voltage products that specify LED or are supplied with a 12v DC LED globe must be used with a suitable LED driver, refer to pages (185 - 206)
Lumen output measured at source. All globes supplied with fittings are non dimmable. If you require 240v dimmable globes refer to pages (257 - 258)