

Stainless Steel Mini LED Eyelid/ Step Lights

- Mini recessed step light with eyelid
- Stainless steel 316 marine grade
- Flush tempered glass
- Face diameter: 53mm
- Installation depth: 90mm
- **NOTE: adequate drainage must be allowed**
- IP Rating: IP67

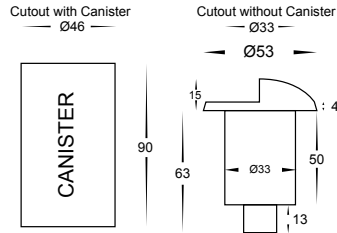
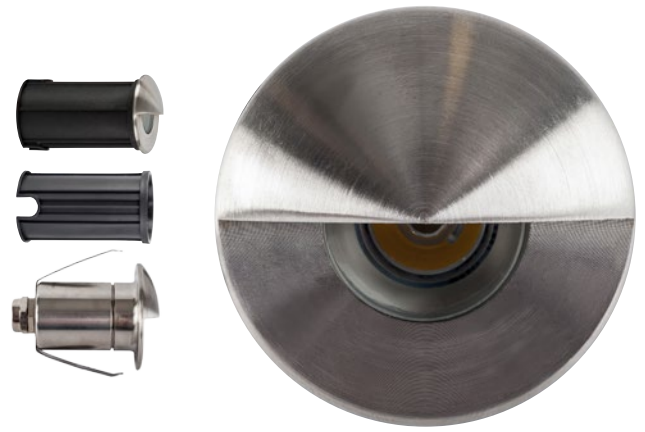


IMAGE	PART NUMBER	COLOUR TEMP	OUTPUT	POWER	INCLUDED GLOBES
	HV2891C-SS316	Cool white, 6000k	90lm	12v DC LED 1w	Built in 1w LED
	HV2891W-SS316	Warm white, 3000k	80lm	12v DC LED 1w	Built in 1w LED

Stainless Steel Mini LED In-ground/ Step Lights

- Mini recessed in-ground/step light
- Stainless steel 316 marine grade
- Flush tempered glass
- Face diameter: 53mm
- Installation depth: 90mm
- **NOTE: adequate drainage must be allowed**
- IP Rating: IP67

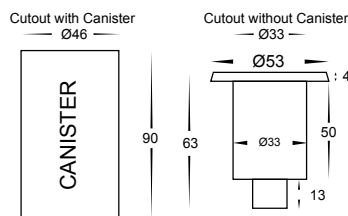


IMAGE	PART NUMBER	COLOUR TEMP	OUTPUT	POWER	INCLUDED GLOBES
	HV2892C-SS316	Cool white, 6000k	90lm	12v DC LED 1w	Built in 1w LED
	HV2892W-SS316	Warm white, 3000k	80lm	12v DC LED 1w	Built in 1w LED

All low voltage products that specify LED or are supplied with a 12v DC LED globe must be used with a suitable LED driver, refer to pages (185 - 206)
Lumen output measured at source. All globes supplied with fittings are non dimmable. If you require 240v dimmable globes refer to pages (257 - 258)