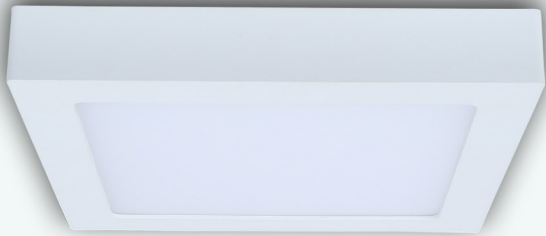
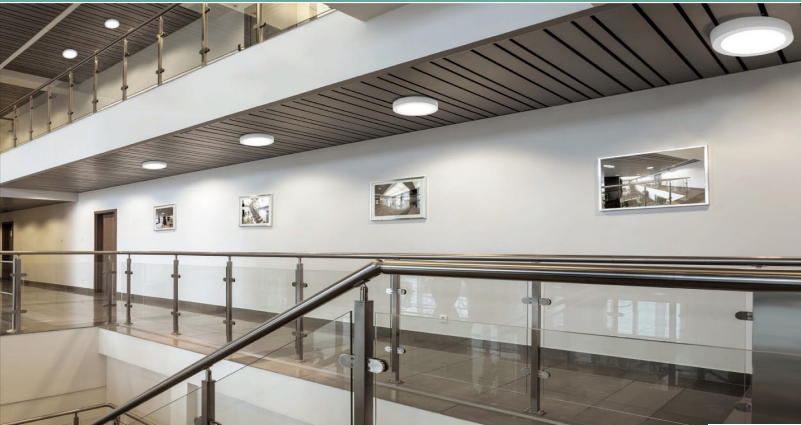


DIMMABLE SURFACE SERIES

Dedicated LED Surface Mounted Lights



LYNX ▶

PRODUCT FEATURES

- Input voltage: 180-265V AC 50/60Hz
- SMD2835 LED chips
- Power factor: 0.9
- Material: PC body, PMMA frosted diffuser
- Designed in Australia
- Ambient temp: -20 to 40°C (The life of the lamp will gradually reduce if used outside these temperature parameters)
- Suitable for use with 3 wire motion or microwave sensor
- Suitable for 2-way switching
- Large terminal holes for easy connection

RECOMMENDED DIMMERS:

| BRAND | CODE |
|---------------------|-----------|
| CLA - Trailing Edge | VELA |
| CLA - Trailing edge | LYNX |
| Diginet - Ledsmart | MMDM/PB |
| Diginet - Ledsmart | MMDM/RT |
| Clipsal - Universal | 32ELEDM |
| Clipsal - Universal | 32E450UDM |
| HPM - Trailing Edge | CAT400T |



| CODE | DESCRIPTION | KELVIN (K) | LUMENS (LM) | WATT (W) | CRI | PCS PER DIMMER | DIAM/ WIDTH (MM) | DEPTH (MM) | WEIGHT (kg) | BOX (cm) | CARTON QTY |
|------------|----------------------------|------------|-------------|----------|-----|----------------|------------------|------------|-------------|-------------|------------|
| SURFACE1D | OYSTER DIMM LED S/M WH RND | 3000 | 450 | 6 | 82 | 2-14 | Ø120 | 40 | 0.25 | 13.2x13x4.5 | 40 |
| SURFACE2D | OYSTER DIMM LED S/M WH RND | 3000 | 900 | 12 | 82 | 2-9 | Ø178 | 40 | 0.47 | 19x19x5 | 20 |
| SURFACE3D | OYSTER DIMM LED S/M WH RND | 3000 | 1450 | 18 | 82 | 2-5 | Ø225 | 40 | 0.65 | 24x24x5 | 20 |
| SURFACE4D | OYSTER DIMM LED S/M WH RND | 5000 | 480 | 6 | 82 | 2-14 | Ø120 | 40 | 0.26 | 13.5x13.5x5 | 40 |
| SURFACE5D | OYSTER DIMM LED S/M WH RND | 5000 | 960 | 12 | 82 | 2-9 | Ø178 | 40 | 0.47 | 19.5x19.5x5 | 20 |
| SURFACE6D | OYSTER DIMM LED S/M WH RND | 5000 | 1550 | 18 | 82 | 2-5 | Ø225 | 40 | 0.65 | 24x24x5 | 20 |
| SURFACE7D | OYSTER DIMM LED S/M WH SQ | 3000 | 450 | 6 | 82 | 2-14 | 120x120 | 40 | 0.25 | 13.2x13x5 | 40 |
| SURFACE9D | OYSTER DIMM LED S/M WH SQ | 3000 | 1450 | 18 | 82 | 2-5 | 225x225 | 40 | 0.65 | 24x24x5 | 20 |
| SURFACE12D | OYSTER DIMM LED S/M WH SQ | 5000 | 1550 | 18 | 82 | 2-5 | 225x225 | 40 | 0.65 | 24x24x5 | 20 |

Brochure updated on 28.06.2018

