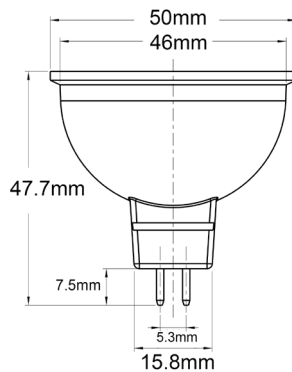


MR16 LED GLOBES

- Input voltage: 12V AC/DC 50/60Hz
- Input current: 1100mA
- Material: aluminium & plastic
- Wattage: 6W
- Power factor: >0.5
- 6pcs Sanán 2835 LED chips
- Life time: 25,000hrs
- Beam angle: 38°
- CRI: ≥80
- Ambient temp: -15°C to 40°C
- Not suitable for dimming
- Suitable for 2-way switching
- Suitable for use with Microwave & PIR sensors
- IP40 rated
- 1 year replacement warranty and suitable for enclosed fittings



MR1601 & MR1602



Recommended Transformers/Drivers:

BRAND - CODE	TYPE	QTY of LAMPS PER DIMMER
CLA CLA1115011	LED Driver	2-8pcs
CLA CLA113011	LED Driver	2-4pcs
CLA OTTER1	LED Driver	1-2pcs
CLA CLADR12W	LED Driver	1-2pcs
AQUATRAN AQ013-050	Iron Core Transformer	2-8pcs
LUXMAN EH50.302	Transformer	2-6pcs

CODE	DESCRIPTION	TECHNICAL DATA			PACKAGING DETAILS				
		KELVIN (K)	LUMENS (LM)	WATT (W)	LENGTH (CM)	WIDTH (CM)	HEIGHT (CM)	WEIGHT (KG)	CARTON QTY
MR1601	GLOBE LED 12V AC/DC (White) MR16 6W 3000K 38D	3000	480	6=40	5.3	5.3	5.6	0.0578	1/10/100
MR1602	GLOBE LED 12V AC/DC (White) MR16 6W 5000K 38D	5000	495	6=40	5.3	5.3	5.6	0.0578	1/10/100

UPDATED ON 13/11/2017

Tel: (02) 9938 7100 | Fax: (02) 9938 7115 | Email: sales@clalighting.com.au

Website: www.clalighting.com.au

Follow us: facebook.com/CLALighting