



## S-FIRE MKII SEL10SF3D63IP65 - 1.8W

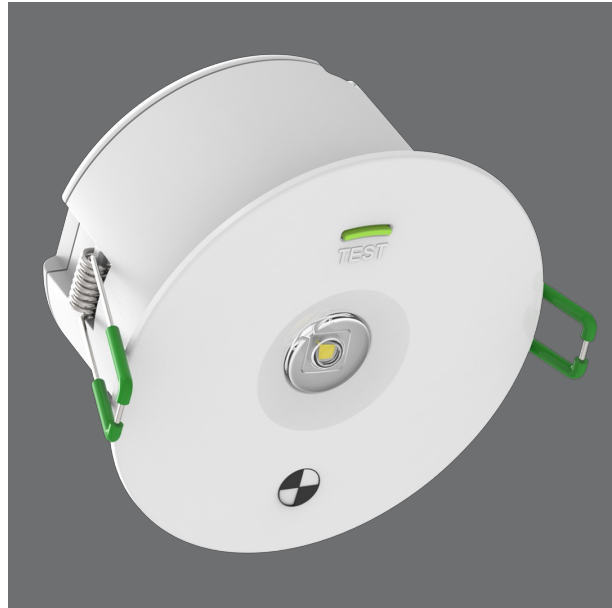
NON-MAINTAINED - IP65 recessed 1.8 watt emergency luminaire, D63 classification

### Application

A perfect choice for apartments or commercial spaces requiring compliance to AS/NZS 2293

### Design Specifications

- Compliant to AS/NZS2293, with an impressive D63 emergency lighting classification, non-maintained
- Polycarbonate white body profile, double insulation, Ø90mm cut-out, complete with a Ø170mm adaptor ring accessory
- 1.8 watt system, combined LED charge status display and test button, with integral control gear and high performance integral Lithium battery
- 1.2 m flex & 2 pin plug fitted, IC-4 rated
- Guaranteed 90 minutes emergency function.



### Performance

- Dimmable - **NO**



### Technical Specification

Product	Model No.	Input Voltage (V/AC)	Power (W)	CCT (K)	CRI	Body Colour
	SEL10SF3D63IP65	240	1.8	6500	80	WHITE
Diameter (mm)	Dim (mm)	Cut Out (mm)	Mass (kg)			
104	66(H)	90	0.37			

**Important notes:** (1) Continual use in emergency mode greater than 240 hours without recharge, will result in battery failure and void battery warranty.

Due to continued product and technology enhancements, data sourced from sal.net.au shall not form part of any contract and or technical performance guarantee unless expressly confirmed in writing by SAL at the time of order. Products are sold in accordance with [SAL Terms and Conditions of sale](#) and all images shown are for illustration purposes only and may vary from the actual colour or finish. Unless specifically stated, all IP ratings nominated for Interior products are from "below the ceiling".