



## RENMARK S9082R - 14/20W TC/DP

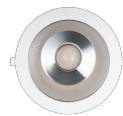
IP44, 14/20W LED downlight with selectable colour temperature and power

### Application

Ideal for any retail, residential or commercial interior space

### Design Specifications

- Premium aluminium body profile, IC-4 rated
- Stylish white body profile and WH trim with optional WH square, BK round or BK square quick connect trims to order
- High performance faceted reflector profile, beam 60°, UGR <19
- High efficiency SMD LED chips
- Remote constant current selectable power, flickerCONTROLLED LED driver, with flex and plug
- Selectable colour temperature 3000, 4000, 5700K



### Technical Specification

Model No.	Input Voltage (V/AC)	Multiple Wattage	Lumens (lm)	CCT (K)	Beam Angle (°)	Dimmable
S9082R20TC/DP S9082SQ/WH/P S9082RD/BK/P S9082SQ/BK/P	240	14/20	1700/1900/1800	3000/4000/5700	60	NO

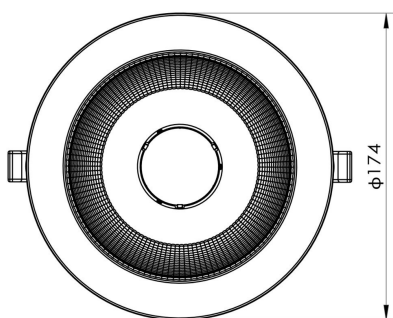
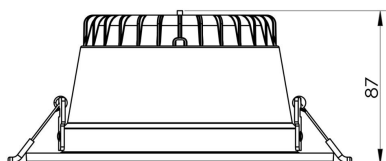
Model No.	CRI	Body Colour	Cut Out (mm)	Diameter (mm)	Dim (mm)
S9082R20TC/DP	80	WHITE	145	174	87(H)
S9082SQ/WH/P		WHITE	145		174(L) x 174(W)
S9082RD/BK/P		BLACK	145	174	
S9082SQ/BK/P		BLACK	145		174(L) x 174(W)

NOTE: lumens (lm) displayed are at MAXIMUM power

Due to continued product and technology enhancements, data sourced from sal.net.au shall not form part of any contract and or technical performance guarantee unless expressly confirmed in writing by SAL at the time of order. Products are sold in accordance with SAL Terms and Conditions of sale and all images shown are for illustration purposes only and may vary from the actual colour or finish. Unless specifically stated, all

IP ratings nominated for Interior products are from "below the ceiling".

## Dimensions



# THE SFI SYSTEM ELIMINATES LED FLICKERING.

**SIMPLY  
MATCH THE  
ECOGEN SFI  
DOWNLIGHT  
WITH THIS  
SDD400SFI  
DIMMER.**



**DIM with  
FLICKER  
CONTROL**

For related  
products  
please  
scan me

