



QUICK CONNECT SURFACE SOCKET ESS101

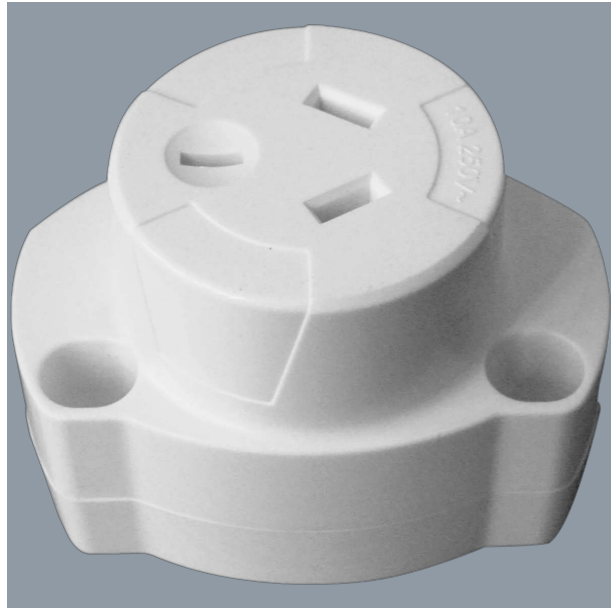
inline surface socket, 240V / 10A rated

Application

Australian approved electrical accessories, saving installation time and money

Design Specifications

- Australian approved three pin 240V, 10A socket, compliant to AS/NZS3112:2017, innovative quick connect cable termination design, saving you time and money
- Innovative quick connect cable termination design, saving you time and money, designed to suit 1.5mm² to 2.5mm² FLAT twin and earth TPS, stranded cable only, colour white.
- **ESS101 Installation Instructions:**
 - (1). Remove a slight piece of outer sheathing ONLY to check wire colours for polarity identification.
 - (2). Rotate the rear cover to take off the locking ring. Note: When connecting 2.5 mm² cable, the 1.5mm² cable size insert needs to be taken off.
 - (3). Place cable into terminal path. Ensure correct polarity by following colour coding on the terminal path.
 - (4). Align rectangle ribs with terminal path, push the locking ring and rear cover back down & twist clockwise until it is firmly tightened with the body.

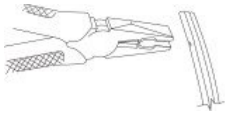


Technical Specification

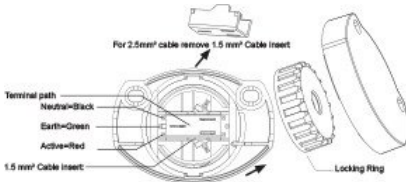
Model No.	Input Voltage (V/AC)	Dim (mm)	Body Colour
ESS101	240	71(L) x 51(W) x 51(H)	WHITE

Due to continued product and technology enhancements, data sourced from sal.net.au shall not form part of any contract and or technical performance guarantee unless expressly confirmed in writing by SAL at the time of order. Products are sold in accordance with [SAL Terms and Conditions of sale](#) and all images shown are for illustration purposes only and may vary from the actual colour or finish. Unless specifically stated, all IP ratings nominated for Interior products are from "below the ceiling".

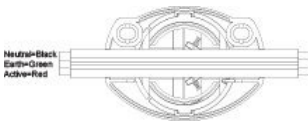
Dimensions



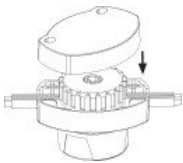
INSTALLATION INSTRUCTIONS STEP 1



INSTALLATION INSTRUCTIONS STEP 2



INSTALLATION INSTRUCTIONS STEP 3



INSTALLATION INSTRUCTIONS STEP 4

THE NEW ESS106 IS SMALL IN SIZE BUT BIG ON FEATURES.



For more
information
please
scan me

