



PIXIE TIMER SWITCH G3 STS600BTAM

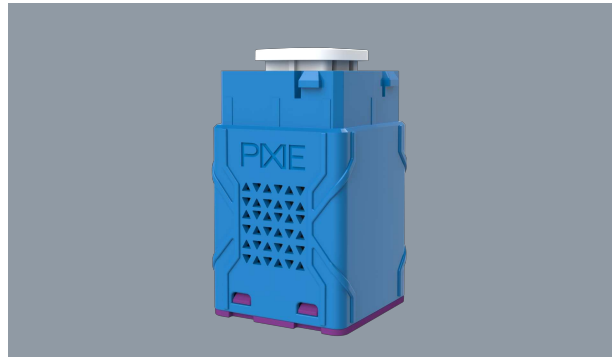
SMART HOME digital push button timer switch with manual override function

Application

Ideal for residential designs and commercial interior spaces requiring precise digital scheduling and energy saving opportunities

Design Specifications

- Digital push button control, 2 wire termination
- Easy to install, programmable delay time, Bluetooth wireless control enabled
- Easy navigation and simple time delay selection when using the SAL PIXIE or SAL PIXIE PLUS apps.
- As a PIXIE MASTER device, functionality is achieved with all compatible loads (min 9W / max 600W), see installation sheet for details
- With the inclusion of the SAL Gateway and the internet, you can control your PIXIE devices from anywhere in the world
- Ideal for Bathroom Exhaust fan run-on timers, Walk-in-Robes, or Heated Towel Rails



Technical Specification

Product	Model No.	Input Voltage (V/AC)	Body Colour	Dim (mm)
	STS600BTAM	240	WHITE	42(L) x 24(W) x 24(H)

Minimum load rating is subject to product capability, this size load may require the inclusion of the LOAD capacitor included in the product carton.

Due to continued product and technology enhancements, data sourced from sal.net.au shall not form part of any contract and or technical performance guarantee unless expressly confirmed in writing by SAL at the time of order. Products are sold in accordance with [SAL Terms and Conditions of sale](#) and all images shown are for illustration purposes only and may vary from the actual colour or finish. Unless specifically stated, all IP ratings nominated for Interior products are from "below the ceiling".

THE SFI SYSTEM ELIMINATES LED FLICKERING.

**SIMPLY
MATCH THE
ECO GEM SFI
DOWNLIGHT
WITH THIS
SDD400SFI
DIMMER.**



**DIM with
FLICKER
CONTROL**

For related
products
please
scan me

