



PANEL S9764HETC - 24W

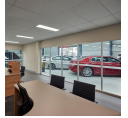
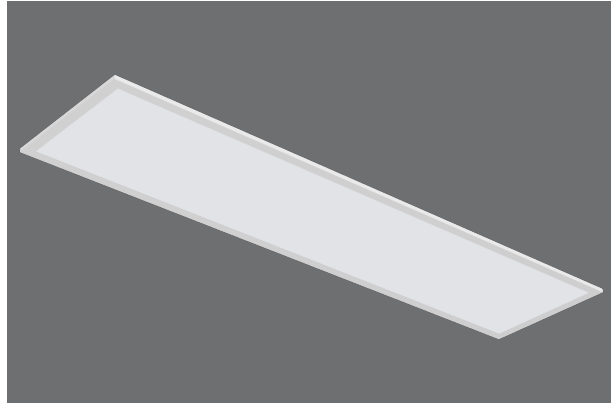
High performance LED panel, 24W with selectable CCT

Application

Designed for commercial and office space lighting tasks.

Design Specifications

- Extruded aluminium profile with high performance optical design, suitable for a range of installation types.
- White powder coated finish
- High efficiency LED optics, CRI > 80, SDCM <6, optical performance > 116lm/W
- Remote constant current non-dimmable LED driver PF>0.9, complete with flex and plug
- Selectable CCT 3000 / 4000 / 5700K
- Recessed frames, surface mount kits and suspended wire kits available



Technical Specification

| Product | Model No. | Input Voltage (V/AC) | Power (W) | Lumens (lm) | CCT (K) | CRI |
|---------|--------------|----------------------|-----------|----------------|----------------|-----|
| | S9764HE312TC | 240 | 24 | 2800/3100/3000 | 3000/4000/5700 | 80 |

| Beam Angle (°) | Dimmable | Body Colour | Dim (mm) | Mass (kg) |
|----------------|----------|-------------|--------------------------|-----------|
| 110 | NO | WHITE | 1195(L) x 295(W) x 32(H) | 1.5 |

Due to continued product and technology enhancements, data sourced from sal.net.au shall not form part of any contract and or technical performance guarantee unless expressly confirmed in writing by SAL at the time of order. Products are sold in accordance with [SAL Terms and Conditions of sale](#) and all images shown are for illustration purposes only and may vary from the actual colour or finish. Unless specifically stated, all IP ratings nominated for Interior products are from "below the ceiling".