



NEON SIDE-BEND 24V SINGLE COLOUR IP66, FLN2407 - 7W/M

Run length 10 metre, flexible Neon SIDE Bend strip, 24V, IP66

Application

A very flexible solution for residential and commercial interior spaces

Design Specifications

- High efficiency SMD LED chips, luminous efficacy up to 40lm/W, beam distribution 270°
- Maximum run length 10m, cuttable every 50mm at scissors symbol
- A wide range of termination accessories available
- Smooth colour uniformity
- SIDE-BEND Blue, Green, Yellow, Red or White in 3000K/4000K/6000K colour choices, CRI >80
- Driver ordered separately, power 7 W/m



Performance

Dimmable - **OPTIONAL**

Dimmer Type - **refer driver specification**

Technical Specification

Model No.	Input Voltage (V/DC)	Watts per metre (W/m)	Beam Angle (°)	CRI	Luminous Flux Per Meter (lm/m)	LEDs Per Metre
FLN2407WW17	24	7	115	80	500	120
FLN2407CW17	24	7	115	80	520	120
FLN2407DL17	24	7	115	80	500	120
FLN2407YW17	24	7	115	80	45	120
FLN2407RD17	24	7	115	80	45	120
FLN2407GN17	24	7	115	80	180	120
FLN2407BU17	24	7	115	80	50	120

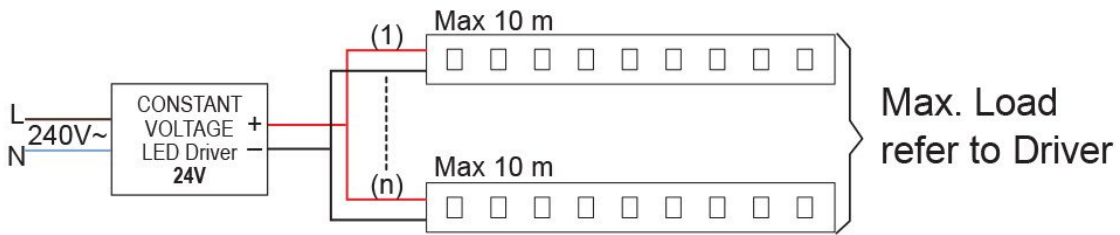
Technical Specification

Model No.	Dim (mm)	Colour Temp. (K)
FLN2407WW17	10(W) x 17(H)	3000
FLN2407CW17	10(W) x 17(H)	4000
FLN2407DL17	10(W) x 17(H)	6000
FLN2407YW17	10(W) x 17(H)	
FLN2407RD17	10(W) x 17(H)	
FLN2407GN17	10(W) x 17(H)	
FLN2407BU17	10(W) x 17(H)	

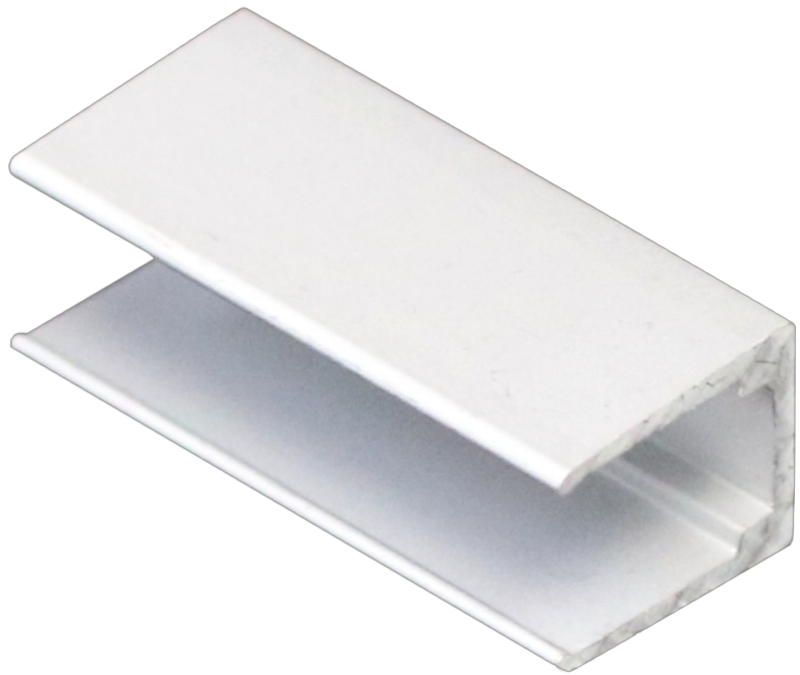
Due to continued product and technology enhancements, data sourced from sal.net.au shall not form part of any contract and or technical performance guarantee unless expressly confirmed in writing by SAL at the time of order. Products are sold in accordance with [SAL Terms and Conditions of sale](#) and all images shown are for illustration purposes only and may vary from the actual colour or finish. Unless specifically stated, all IP ratings nominated for Interior products are from "below the ceiling".

Dimensions

WIRING DIAGRAM



Mounting clips



Product Images

