



## NEON BEND - 24V RGB IP66, FLN2412 - 12W/M

Run length 5 metre, flexible Neon TOP or SIDE Bend RGB strips, 24V, IP66

### Application

A very flexible solution for residential and commercial interior spaces

### Design Specifications

- High efficiency SMD LED chips, 12W/m, beam distribution 115 degree.
- Cuttable every 83mm at scissors symbol ✂ , cut to length by special order
- Driver ordered separately, power 12W/m, 24V DC
- Termination accessories connectors are available, contact SAL customer service for order details

### Performance

Dimmable - **OPTIONAL**

Dimmer Type - **refer driver specification**



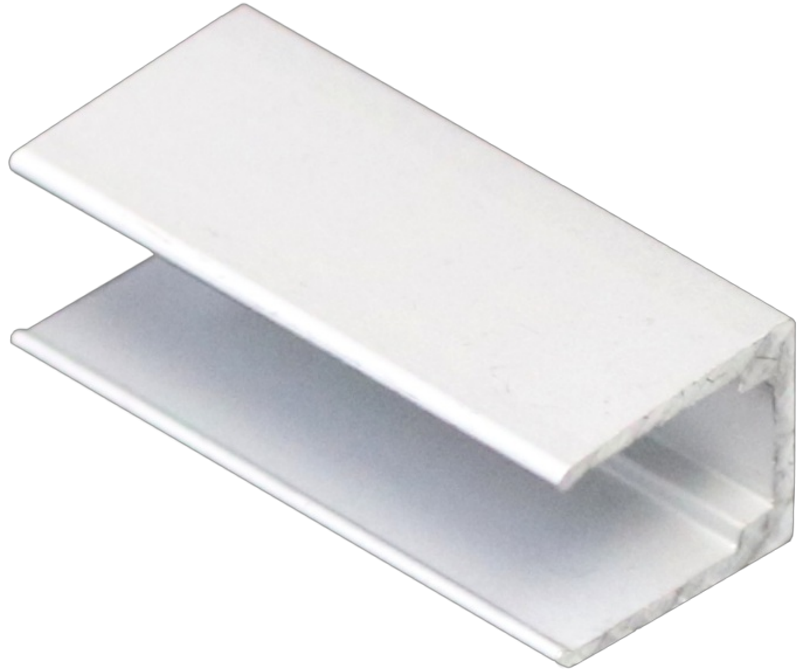
### Technical Specification

| Model No.       | Input Voltage (V/DC) | Watts per metre (W/m) | Beam Angle (°) | LEDs Per Metre | Dim (mm)      |
|-----------------|----------------------|-----------------------|----------------|----------------|---------------|
| FLN2412RGB1312T | 24                   | 12                    | 115            | 120            | 13(W) x 12(H) |
| FLN2412RGB1217  | 24                   | 12                    | 115            | 120            | 12(W) x 17(H) |

Due to continued product and technology enhancements, data sourced from sal.net.au shall not form part of any contract and or technical performance guarantee unless expressly confirmed in writing by SAL at the time of order. Products are sold in accordance with [SAL Terms and Conditions of sale](#) and all images shown are for illustration purposes only and may vary from the actual colour or finish. Unless specifically stated, all IP ratings nominated for Interior products are from "below the ceiling".

## Dimensions

Mounting clips



## Product Images



