



## LOUNGE II S9328/220TC - 15W

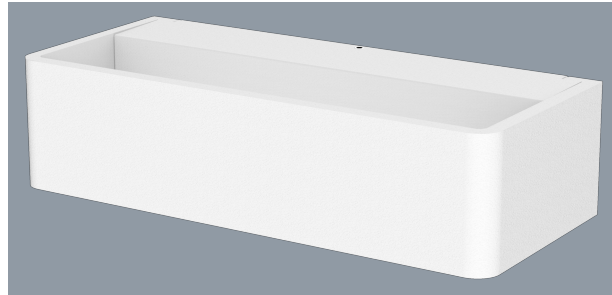
15 watt decorative IP54 architectural LED wall mount luminaire, with selectable CCT

### Application

A decorative architectural solution for residential, commercial interior or exterior spaces

### Design Specifications

- Convenient TC selectable colour temperature, 3000K / 4000K / 5000K
- Durable white or black powder coated finish
- Integral non-dimmable control gear 15 watt
- Robust die-cast aluminium body profile
- High efficiency SMD LED
- Indirect illumination (up and down) optical performance



- IP54
- ta40
- 2 YEARS  
COMMERCIAL WARRANTY
- 3 YEARS  
RESIDENTIAL WARRANTY
- WARM WHITE  
3000K
- COOL WHITE  
4000K
- DAYLIGHT  
5000K

### Technical Specification

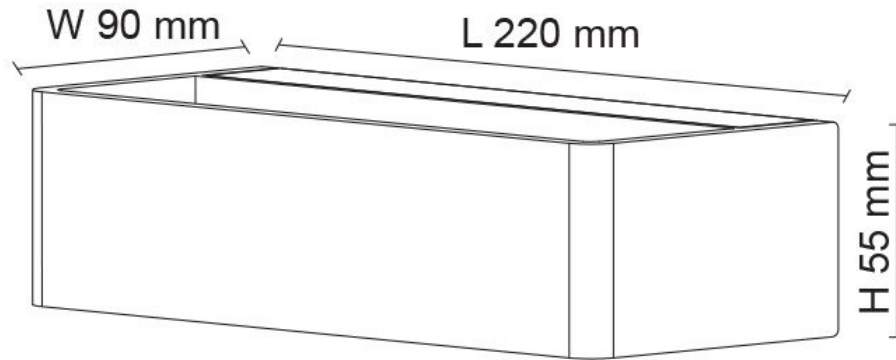
| Model No.      | Description              | Input Voltage (V/AC) | Power (W) | Lumens (lm)  | CCT (K)        | CRI |
|----------------|--------------------------|----------------------|-----------|--------------|----------------|-----|
| S9328/220TC/WH | LOUNGE II 15W/TC WH IP54 | 240                  | 15        | 800/1000/900 | 3000/4000/5000 | 80  |
| S9328/220TC/BK | LOUNGE II 15W/TC BK IP54 | 240                  | 15        | 800/1000/900 | 3000/4000/5000 | 80  |

### Technical Specification

| Model No.      | Dim (mm)               | Body Colour |
|----------------|------------------------|-------------|
| S9328/220TC/WH | 220(L) x 90(W) x 55(H) | WHITE       |
| S9328/220TC/BK | 220(L) x 90(W) x 55(H) | BLACK       |

Due to continued product and technology enhancements, data sourced from sal.net.au shall not form part of any contract and or technical performance guarantee unless expressly confirmed in writing by SAL at the time of order. Products are sold in accordance with SAL Terms and Conditions of sale and all images shown are for illustration purposes only and may vary from the actual colour or finish. Unless specifically stated, all IP ratings nominated for Interior products are from "below the ceiling".

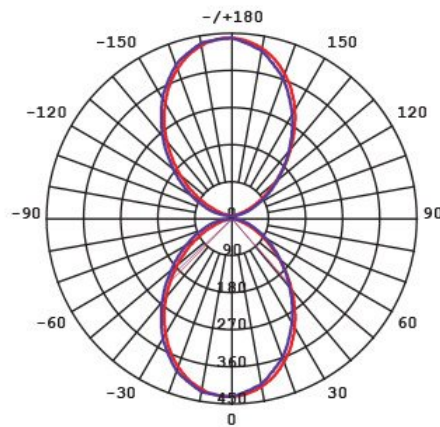
## Dimensions



## Photometric Data

Unit: cd C0/C180 \_\_\_\_\_ C90/C270 \_\_\_\_\_

### S9328/220TC at 5000K





## Product Images

---

