



KEW SL9721/EM - 20/35W

Maintained emergency, IP65 LED weatherproof batten 20/35 watt with selectable power

Application

Multi-purpose commercial or industrial utility applications

Design Specifications

- Rounded shape vandal proof design, robust polycarbonate body and UV stabilized polycarbonate diffuser
- Stainless steel clips & screws, 20mm cable gland entry, IP65 and IK08 rated, sensor and emergency options
- Operating temperature +40 degree C
- Integral constant current non-dimmable LED driver, variable wattage DIP switch, 100%, 75% or 50% setting available
- Compliant to AS/NZS2293 Emergency Lighting & Exit Signs, guaranteed minimum 90 minutes emergency mode function with LiFePO4 battery technology. Emergency classification: D32@C0, D20@C90 (SL 9721/35EM), D50@C0, D25@C90 (SL9721/20EM).
- Accessories included - PVC cable glands and suspension brackets. Installation types - Surface mount (standard) or if Suspended (a suspension kit is required).



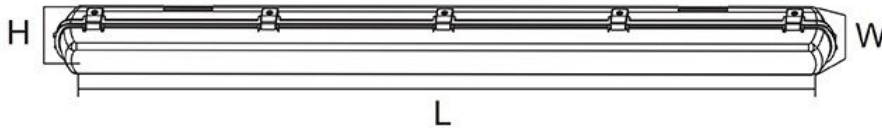
Technical Specification

Model No.	Description	Input Voltage (V/AC)	CCT (K)	Power (W)
SL9721/20EM	LED VANDALPROOF 20W IP65 EMERG LITH	240	3000/5000	20
SL9721/35EM	LED VANDALPROOF 35W IP65 EMERG LITH	240	3000/5000	35

Due to continued product and technology enhancements, data sourced from sal.net.au shall not form part of any contract and or technical performance guarantee unless expressly confirmed in writing by SAL at the time of order. Products are sold in accordance with SAL Terms and Conditions of sale and all images shown are for illustration purposes only and may vary from the actual colour or finish. Unless specifically stated, all IP ratings nominated for Interior products are from "below the ceiling".

Dimensions

SL9721



Surface/suspended mounting clips to maintain IP rating



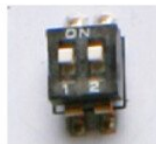
Surface mounting bracket



Suspension bracket



Stainless steel clips can be fastened with extra locking screws for security



Variable wattage DIP switch

Accessories Included

- Allen key & screws
- PVC cable glands
- Suspension brackets

Installation type

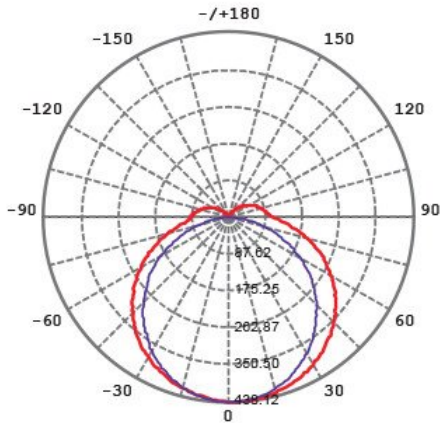
- Surface mounted
- Suspended
(Suspension kit is required)

Photometric Data

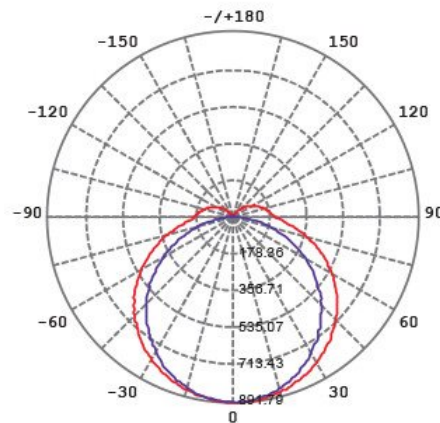
Photometric Data (at maintained power)

Unit: cd C0/C180 _____ C90/C270 _____

SL9721/20W WW at 3000K



SL9721/35W DL at 5000K



Product Images



Surface/suspended mounting clips to maintain IP rating

Surface mounting bracket Suspension bracket

Accessories Included

- Allen key & screws
- PVC cable glands
- Suspension brackets

Installation type

- Surface mounted
- Suspended (Suspension kit is required)

Stainless steel clips can be fastened with retrolocking screws for security Variable wattage DIM switch

