



CONCRETE CAN INSERT S9913

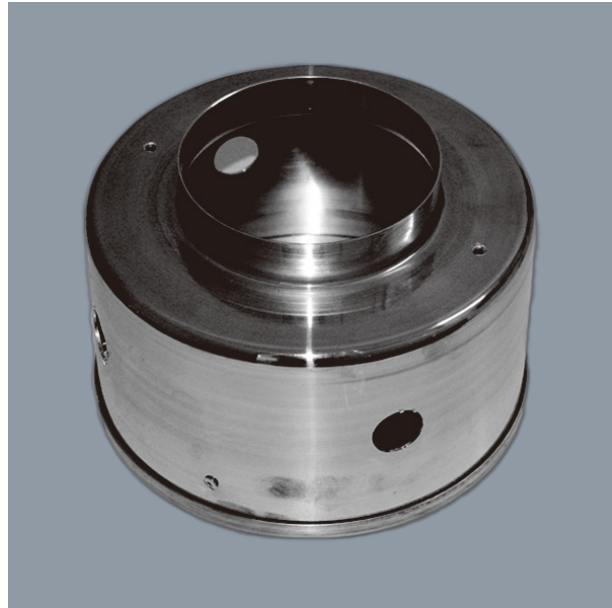
Aluminium concrete can insert

Application

Downlight accessory for concrete installation requirements

Design Specifications

- Designed for SAL luminaires: S9003, S9041, S9141, S9046, S9065, S9071, S9048, S9146
- Material, aluminium construction



Technical Specification

Model No.	Description	Dim (mm)
S9913	Concrete can insert for approved SAL downlights	172(W) x 115(H)

Due to continued product and technology enhancements, data sourced from sal.net.au shall not form part of any contract and or technical performance guarantee unless expressly confirmed in writing by SAL at the time of order. Products are sold in accordance with [SAL Terms and Conditions of sale](#) and all images shown are for illustration purposes only and may vary from the actual colour or finish. Unless specifically stated, all IP ratings nominated for Interior products are from "below the ceiling".

Dimensions

