



## BONDI LITE SE7322TC - 2 x 4W

IP65 LED architectural wall luminaire, with 2 x 4 watt GU10 lamps included

### Application

A decorative residential exterior coastal environments or interior spaces

### Design Specifications

- Robust reinforced nylon body construction
- Stylish black finish
- Clear tempered glass cover
- Beam distribution 50°, selectable CCT 2 x 4 watt GU10 lamps included, CCT 3000 / 4000 / 6000K
- Up / down light distribution
- IP65 performance, electrical class II



### Performance

- Dimmable - **NO**



### Technical Specification

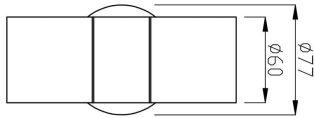
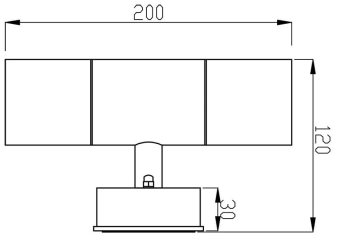
Product	Model No.	Input Voltage (V/AC)	Power (W)	Lumens (lm)	CCT (K)	CRI
	SE7322TC/BK	240	8	360/400/380	3000/4000/6000	80
Beam Angle (°)	Mass (kg)	Diameter (mm)	Dim (mm)	Base Type	Body Colour	
50	0.27	60	200(H) x 120(D)	GU10	BLACK	

NOTE: Lumens (lm) displayed are PER lamp

Due to continued product and technology enhancements, data sourced from sal.net.au shall not form part of any contract and or technical performance guarantee unless expressly confirmed in writing by SAL at the time of order. Products are sold in accordance with SAL Terms and Conditions of sale and all images shown are for illustration purposes only and may vary from the actual colour or finish. Unless specifically stated, all IP ratings nominated for Interior products are from "below the ceiling".



## Dimensions





Why is the IP rating important? In brief, IP (Ingress Protection) ratings are defined in EN 60529 and simply defines the ability of an electrical product to seal and protect against the intrusion of foreign objects and water.

(I) As the first numeral stands for intrusion of a foreign object, where (P) as the second numeral stands for the penetration of moisture.

As a guide IP20 rated products would be seen in interior spaces with no requirement for protection against the elements, where an IP65 product would be found in an exterior application which required substantial protection against the elements.

