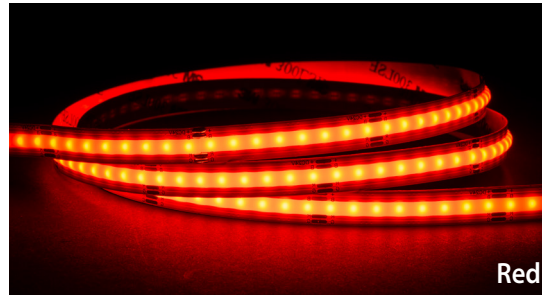


IP20 24v DC 480LED RGB COB Dotless Strips

Watts Per Metre	15w
Input Voltage	24v DC
IP Rating	IP20
Colour Temp	RGB
Lumens	500lm
Beam Angle	120°
Size	10mm (W) x 2mm (H)
PCB	3oz
Wiring	Parallel
Lamp Expectancy	<50,000hrs
CRI	CRI>80
Dimmable	Yes - With RGB Controller
LED Chip Type	COB
Compatible Driver	Non-Dimmable
No. of Chips Per Metre	480
Maximum Cut Length	5000mm
Cutting Increments	50mm
Mounting	Aluminium Profile or Heat Sink
Operating Temperature	0 - + 60° Celcius
Ambient Temperature	-20° - + 50° Celcius
Warranty	3 Years Replacement*



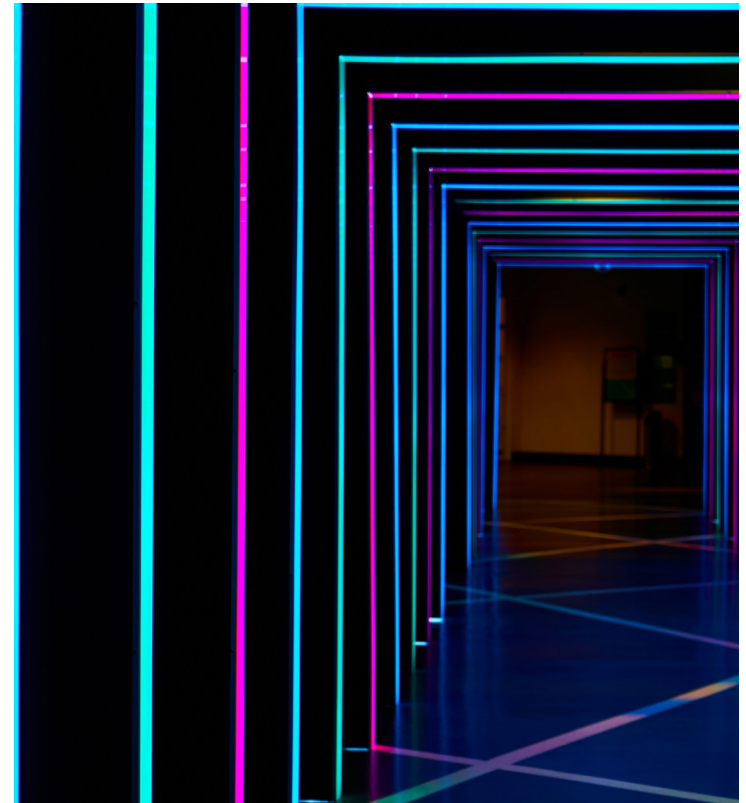
Red



Green

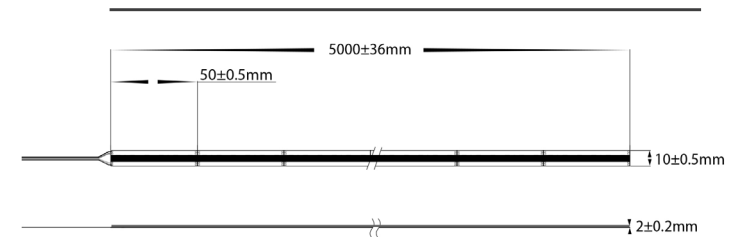


Blue



*Representation of an LED dotless COB strip in a LED profile

LED Strip Dimensions



Warranty
Terms & Conditions

Website



Havit Lighting 143 Beauchamp Road, Matraville, N.S.W. 2036 | Phone: 02 9381 8300 | Fax: 02 9381 6661 | Email: sales@havit.com.au | Web: www.havit.com.au

Product Ordering



IP20 24v DC 480LED COB Dotless Strips - Per Metre

Image	Part Number	Colour Temp	Lumens	Barcode
	HV9761-IP20-480-RGB		500lm	9350418036506

IP20 24v DC 480LED COB Dotless Strips - 30M Reel

Image	Part Number	Colour Temp	Lumens	Barcode
	HV9761-IP20-480-RGB-30M		500lm	9350418036513

Examples of Compatible RGB Controllers

Touch Panels	Remote Controllers	Zigbee	RF + WiFi
<p>HV9101-E4S HV9101-EX8S HV9101-EX4S</p>	<p>HV9102-M3+M4-5A HV9102-Q4 HV9102-2819RGBW</p>	<p>HV9101-ZB-RGBWTP HV9101-ZB-RGBWREM</p>	<p>HV9101-2820 HV9102-2819RGBW</p>
		HV9105-ZB-5C	HV9105-1009-5C

Scan QR Code below to see the full range of compatible RGB LED Strip Controllers



Scan to explore full range of RGB LED Strip Controllers



Scan to explore full range of Non-Dimmable LED Drivers

Examples of Compatible Non-Dimmable Drivers

Indoor	Outdoor (Weatherproof)
HV9666	HV9651

Scan QR Code to see the full range of compatible Non-Dimmable LED Drivers