

## EMIT-25-RGBW-BLK

### RGBW Inground Light - Black



#### Description

Introducing the EMIT-25 RGBW LED Inground Light Series. The EMIT-25 RGBW is a mini inground light with a cutout of 19mm, ideal for lighting up features where minimalistic light effects are required. Featuring a 1W LED output, with a range of different fascia plates and metalware colour options. Choose from Round Open, Square Open, Eyelid and Halo fascias, as well as the multiway fascias available in 1WAY, 2WAY, 3WAY, and 4WAY. Metalware colour options range from Black, Stainless Steel, Antique Brass and Brushed Brass. RGBW Colour Changeable with the use of an RGBW Colour Controller. Colour selectable from RGB as well as White colours. Functional with 24V DC Constant Voltage LED Drivers. Optional extra accessories such as narrow to medium Beam Angle Lens as well as Honeycomb and frosted diffusers are also available. Part of a family of different sizes to suit most inground lighting applications. Backed by a 5 Year Replacement Warranty.

#### Specification Features

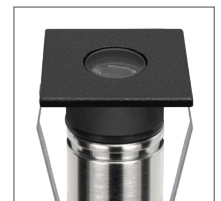
Input Voltage:	24V DC
Power (W):	1W
IP rating (IP):	IP67
IK Rating (IK):	IK10
LED type:	CREE
CCT:	RGBW
Beam angle (°):	19° - 36° - 60° (36° Standard)
Dimmable:	No
Lifespan (hrs):	50,000hrs
Cutout (Ø):	Ø19mm Without Cannister Ø24mm With Cannister

Requires RGBW Colour Controller (Suggested Controller - CHAM-BT-RF-5C 20141)

Requires a 24V Constant Voltage LED Driver (Wire in Parallel)



RO-BLK



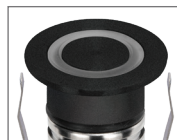
SQ-BLK



EYELID-BLK



HALO-BLK



RING-BLK



1WAY-BLK



2WAY-BLK



3WAY-BLK



4WAY-BLK



Honeycomb (Optional)  
Variant: 10080



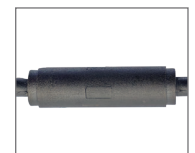
Opal Diffuser (Optional)  
Variant: 10081



19° Lens (Optional)  
Variant: 10082



60° Lens (Optional)  
Variant: 10085



Water Stop Cable Joint

Item No.	Variant									CCT
	RND OPEN	SQR OPEN	EYELID	1WAY	2WAY	3WAY	4WAY	HALO	RING	
<b>EMIT-25-RGBW-BLK</b>	10040	10041	10042	10043	10044	10045	10046	10047	10048	RGBW

#### Diagrams / Additional

