



# KRATOS DIY SECURITY LIGHT WITH MOTION SENSOR (PIR) 22096

Congratulation on the purchase of your new Brilliant Kratos DIY Security Light With Motion Sensor. Before first using, it is most important that you read and follow these instructions, even if you feel you are quite familiar with this type of product. Keep this document handy for future reference.

Your Brilliant LED security light incorporates a PIR (Passive Infra Red) sensor which continuously scans the selected area and immediately switches on your lights when it detects movement in that area. This means that whenever movement is detected within the range of the sensor, the light will switch on automatically. Idea for pathways, entrance, driveways, patios and any area you need to improve safety, security and convenience.

## DO IT YOURSELF Installation (\*)



SPECIFICATION:	
Model Number :	22096/05 – White, 22096/06 - Black
Base Material :	Polycarbonate UV Stable.
Fitting :	LED Security Light
Voltage :	220 – 240V AC 50 Hz
LED Light :	2 x 10W 4000 K Cool White 1300 lm (NON DIMMABLE)
IP Rating :	IP 65
Safety Class :	Class II
Sensor :	Detection Angle 180°, Detection Range (adjustable) 2m – 12m, Timer (adjustable) 10sec – 5 mins, LUX (adjustable) 3 lx to 2000 lx.
Weight :	0.62 kg
Cable :	1m length including 2 pin plug
Dimension (L x H x D mm) :	260 x 160 x 135 mm
Note :	<ul style="list-style-type: none"><li>• Timer Restart after each subsequent detection.</li><li>• NO manual override function</li></ul>

### Important:

- To achieve best results, please read the following carefully, and save these instructions for future reference.
- Operation the security light in an ambient temperature above 30°C may result in a reduced lifetime.
- Best results are achieved when detection occurs when movement is across the scanning beam, rather than directly towards or away from it. Select a mounting position where detection will occur across the scanning area.
- This product must be used only as described in this manual. Any other use not recommended may cause fire, electric shock, or injury to persons.
- To avoid flickering and/or interference with other electronic/electrical equipment it is suggested to wire the security light into its own circuit with its own switch.
- To avoid false activation, the sensor should be directed away from heat sources such as barbecues, flue vents, air-conditioners, other light fittings, moving objects, cars etc.
- Do not install on surfaces which can move or vibrate.
- The sensor range is approximately 12m by 180° this may vary slightly depending on the mounting height and the surrounding environment temperature.
- Do not install the sensor facing into direct sunlight.
- Do not attempt to perform modification or change parts within the light fixture.
- Dispose of packaging thoughtfully.

### Selecting a location:

- For best performance, security light should be mounted 1.8 to 2.4 metres above the selected area (FIG 1). The sensor detection area can vary depending on mounting height and location.
- Select a mounting position where detection will occur across the scanning area (FIG 2). Unit is most sensitive to movement **across** (sideways movement) the sensor.

FIG 1

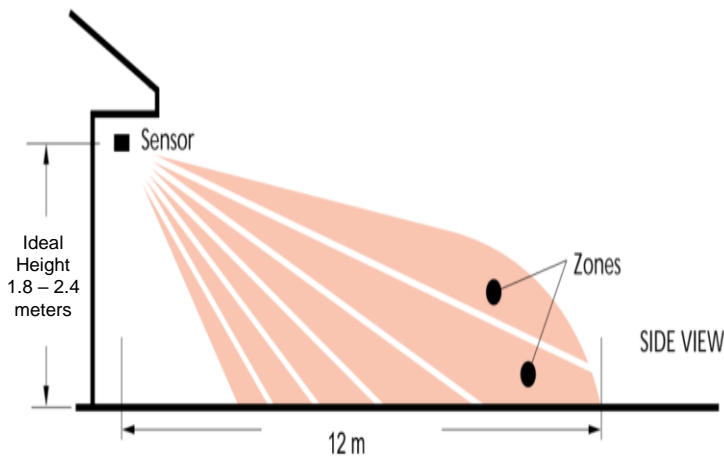
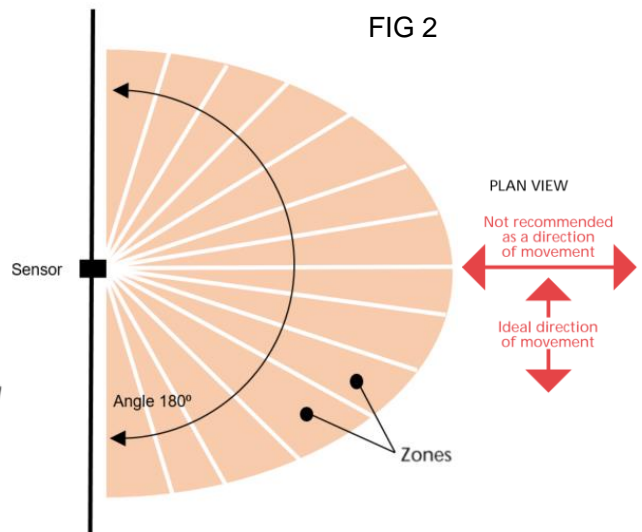
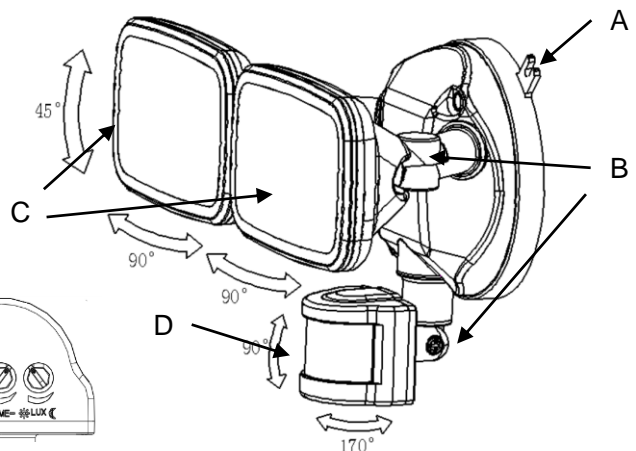
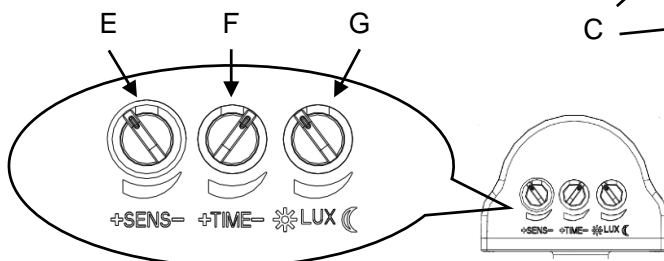


FIG 2



### Part List:

- |                    |                        |
|--------------------|------------------------|
| A – Mounting Lugs. | E – Sensitive Control. |
| B – Knuckle screw. | F – Time Control.      |
| C – LED Light.     | G – LUX Control.       |
| D – PIR sensor     |                        |



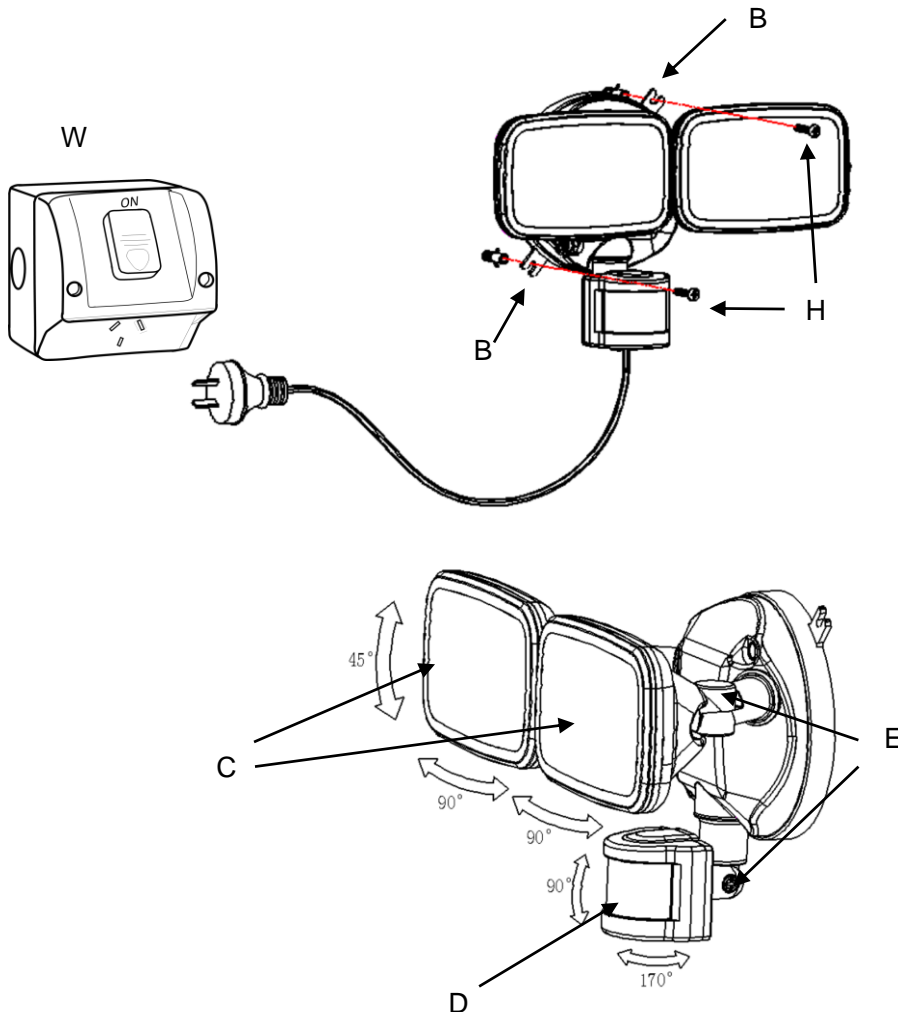
## FOR YOUR SAFETY

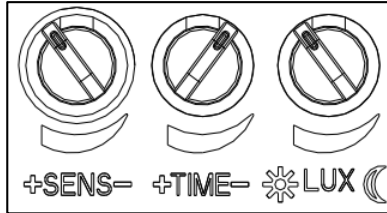
- To prevent electrical shock, please ensure that POWER is DISCONNECTED before installation.
- During use the light head and/or light assembly may become hot.
- Do not install in a position where the fitting can be easily accessed by children or the infirm.
- Do not touch any parts of the assembly with bare hands while it is 'ON'.
- Be aware of the height of your installation. Refer to **'Working at Heights'** guide from your local or State Authorities.
- Any alterations or additions to building wiring **must be completed by a licensed electrician** or person authorised by legislation to work on the fixed wiring of any electrical installation.

## Installation:

**Note: For best performance install at a height between 1.8 and 2.4 meters.**

- Ensure the cable is not plugged into a power point yet and the power is turned off.
- Unpack the fixture carefully and dispose of the packaging material thoughtfully.
- Select a position on the wall adjacent to suitable power point. Drill two holes in the wall using the fitting mounting lugs 'B' as a template. Use screws and suitable fixture system 'H' to install the fitting onto the wall securely
- #Note 1: Exercise caution to avoid drilling into existing electric wiring.
- #Note 2: Ensure the power cable comes down through the cutout on the bottom of the fitting and is not jammed against the wall.
- Loosen the screw at Knuckle 'E' and angle each light head 'C' and sensor 'D' into desired direction, then re-tighten the screw firmly.
- #Note 3: Ensure that the sensor dials on the sensor 'D' must always face downwards.
- Insert the plug into the adjacent outdoor power point 'W' and switch on the power to turn on the security light.





### Time Adjustment:

The Time adjustment control is located on the bottom of the sensor unit. It controls the length of time the light remain on once a person has left the activation area. The time can be adjusted on this sensor from approximately 10 seconds to 5 minutes. Turning the TIME dial clockwise increase the time and anti-clockwise reduces the time.

### Daylight (LUX) Adjustment:

The sensor has a build in photoelectric cell that automatically detects daylight and darkness. Rotating the LUX dial fully anti-clockwise allows the unit to sense objects only during the night. Rotating the dial fully clockwise allows the unit to be walk-tested during the day.

### Sensitivity Adjustment:

The PIR sensor has an adjustment SENS that controls the sensitivity of the sensor. During wintertime, the sensitivity may need to be turn down (anti-clockwise) so that the light is not switching on constantly due to any small heat object detected. Similarly, during warmer months, the sensitivity may be adjusted up (clockwise) in order to see heat objects further away.

### Operation and Testing:

Walk Test Procedure :

- The sensor head itself can be adjusted left or right, and tilt down. Adjust the sensor head to point in the desired direction by loosening the screw at the knuckle, then re-tighten the screw firmly.
- Set the three adjustment control at the PIR sensor to the following positions:
  - TIME – Fully anti-clockwise.
  - LUX – Fully clockwise.
  - SENS – Midway.

“The unit will now operate during daytime as well as night, illuminating the light for approximate 10 seconds each time. This allows testing to be carried out to establish the best position for the sensor.

- Switch ON the main power. The light will immediately illuminate as the unit go through its “warm-up” period. After approximately 10 seconds, the light will extinguish. Try to remain outside the detection area during the warm-up period.
- Walk across the detection area approximate 5 meters from the unit. As you cross the detection “zone”, the light will illuminate. Now stand still until the light extinguishes (this should take approximate 10 seconds).
- Walking at various distances and angles to the unit will help you to establish the detection pattern. If the detection area is too small for your requirements, try angling the sensor head up. This will increase the coverage distance. Angling the head downwards will reduce the range should a small coverage area be required.

Once the test is completed, turn the LUX dial anti-clockwise to allow the unit to sense objects during darkness and adjust the TIME to allow the light stay ON for about 2 minutes.

### CLEANING and MAINTENANCE:

To avoid dust build-up on the sensor for proper functioning of the fitting please wipe the sensor lens with soft cloth approximately every 3 months.  
DO NOT USE chemicals.

## TROUBLESHOOTING GUIDE:

PROBLEM	POSSIBLE REASON	POSSIBLE SOLUTION
Light does not switch ON when there is movement in the detection area.	1. No mains voltage.	Check all connections, fuses/switches.
	2. Nearby lighting is too bright.	Redirect sensor or relocate the lamp.
	3. Sensor positioned in wrong direction.	Redirect sensor.
	4. It a sunny day when LUX setting is too low and Sensitivity setting is too low.	Adjust LUX and SENS settings.
	5. Light fitting may be faulty or has connection problem.	Check light fitting,/globe and wiring connections.
Sensor will not operate during daylight. (Testing mode)	1. No power. 2. Sensor isn't set into daylight operation mode.	First check that the power is turned 'ON'. Check connections, fuses, circuit breakers. Check LUX control knob is fully set for 'DAY' operation.
Light switches ON for no apparent reason.  False triggering.	1. Heat sources such as air-con, vents, heater flues, barbecues, other outside lighting, moving cars, activates the sensor.	Redirect sensor away from those sources. Readjust Sens and LUX controls to lower levels.
	2. Dogs, cats, home animals possums, birds	Adjust/Redirect/Relocate the sensor.
	3. Wind and draughts activated the sensor.	Cover sensor with a black cloth for a period of 5 min to check that the light does not trigger. Sometimes passages between buildings etc. can cause a "wind tunnel" effect. Adjust/Relocate the sensor light.
	4. Electromagnetic interference, from other electronic devices, ON /OFF switching of existing fluorescent, LED, lights etc. wired in the same circuit with sensor light, may cause to trig the light. For example a faulty wall switch or noisy fluorescent tubes/starters may cause to activate the light.	a. Wire the fitting to it's dedicated circuit with wall switch (*) b. Replace the faulty devices, switches in the circuit. c. Replace noisy fluorescent tubes and/or starters. d. Relocate the sensor light. (* ) Always recommended
	5. Reflection from swimming pool, or reflective surfaces ( e.g. polished floors) or direct sunlight.	Redirect sensor from direct sunlight otherwise the photocell may get damaged. Redirect sensor.
Sensor not turning OFF Light remains ON.	1. Continuous false triggering 2. Sensor is being activated again before the expire of the time set.	Set the sensor back into Auto Mode. Turn it OFF, wait min 30s the turn it back ON. Redirect/relocate the fitting to avoid false activation. Check for any extra sources of heat/air movement within detection area such as animals, moving objects. Adjust the sensor head and controls accordingly.
Sensor will not operate at night.	Ambient light is too high.	The level of ambient (street) light in the area may be too high. Adjust LUX level control accordingly and remove any other sources of ambient light if possible.
Sensor switches ON during daylight.	1.Low level of ambient light.	The level of ambient light in the area may be too dark to allow operation in Nighttime only mode. Re-adjust the LUX control accordingly. Redirecting the sensor may help.
	2. LUX control knob is set to daylight position.	Check and turn the LUX control knob to night operation.
The detection distance becomes shorter.	1.The sensor lens is dirty.	Cleaning the LENS use soft cloth soaked with water, don't scratch the LENS.
	2. Warm and wet environment.	Dry/clean the sensor.
Sensor will not operate at all.	No power. Sensor faces the SUN.	Check that the power is switched ON at the circuit breaker or internal wall switch. Check that connections are not loose. Redirect sensor away from SUN.



# KRATOS DIY SECURITY LIGHT WITH MOTION SENSOR (PIR) 22096

## Warranty:

Brilliant Lighting warrants this product against defects in manufacture and workmanship for a period of 2 years from date of purchase. This warranty is only valid for products installed by a qualified electrical contractor and operated within the guidelines specified by Brilliant Lighting, and within the correct operating voltage ranges as stated on the product's rating label.

Warranty does not include damage or loss arising from incorrect installation, operation or maintenance of this product, damage caused through modification, incorrect installation, service by unqualified or unauthorised personnel or lack of regular maintenance and cleaning. Proof of installation by qualified personnel may be required, eg. Electrical Safety Certificate. Proof of purchase must be supplied with all warranty claims.

This warranty is provided in addition to any other rights and remedies of the customer under any law. In applications not intended for household, personal or domestic use, liability is limited to replacement or reimbursement of product only. Brilliant Lighting does not warranty the costs of removal or re-installation of this product or associated components.

*Our goods come with guarantees that cannot be excluded under the Australian Consumer Law. You are entitled to a replacement or refund for a major failure and compensation for any other reasonably foreseeable loss or damage. You are also entitled to have the goods repaired or replaced if goods fail to be of acceptable quality and the failure does not amount to a major failure.*

Any claim under this warranty must be made within 2 years of the date of purchase of the product. To make a claim under the warranty; at your own expense take the product (with proof of purchase – receipt or similar) to the store where you purchased the product or contact Brilliant Lighting at the address below.

This warranty is given by:

**Brilliant Lighting (Aust) Pty. Ltd.**  
**ABN 37 006 203 694**  
**956 Stud Road Rowville, VIC 3178**  
**Phone: 03 9765 2555**  
**Email: [Warranty@brilliant-lighting.com.au](mailto:Warranty@brilliant-lighting.com.au)**  
**MADE IN CHINA**