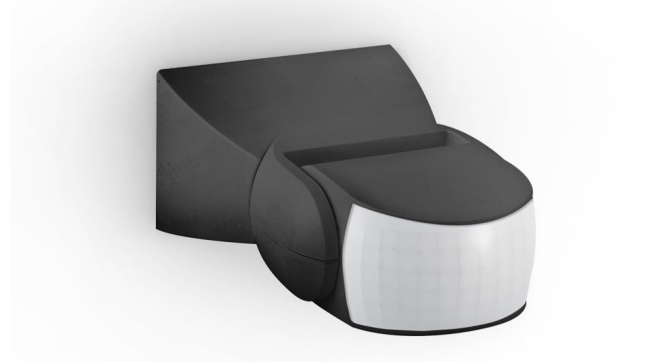


## AT4120/PIR

Wall mount PIR sensor - IP65 - 12m



## ORDERING INFORMATION

Order code	13951
Description	PIR sensor 12m- wall mount- IP65- black
Item Code	AT4120/PIR/BLK

## MECHANICAL

Adjustability	Adjustable
Body Material	Polycarbonate
Fitting Colour	Black
Installation Type	Wall mount
IP Rating	IP65

## ELECTRICAL

Electrical Rating	Class II
Input Frequency	50 Hz
Input voltage	230V~
Working Temp Range	-20 to 40 °C

## SENSOR (S SUFFIX)

Adjustable Detection Area / Sensitivity	No
Adjustable Hold Time	Yes
Adjustable Standby Level	No
Adjustable Standby Period	No
Corridor Function	No
Dawn Reset	No
Detection Range	12 m
Detection Angle	180

Dusk Mode	Yes
Lux Adjustment	Yes
Lux Range	<3 to 2000 lx
Manual Override	No
Sensor Type	PIR
Switched Output	Yes
Switched Output Rating	1200 W
Time Delay	10s to 15m

## COMPLIANCE

Standards	AS/NZS 60669.1 AS/NZS 60669.2.1 EN/IEC 55015 IEC 61000.3 IEC 61000.4
-----------	--

## WARRANTY

Domestic Use Warranty	3 RTB (Total 3 Years)
-----------------------	-----------------------

## DIMENSIONS

Product Height	51 mm
Product Length	117 mm
Product Width	80 mm

## LINE DRAWINGS

---

AT4120/PIR

