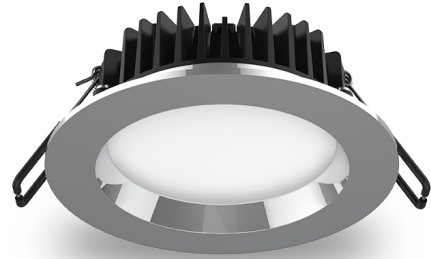


## AT9012 TRI

11W LED Downlight Tri-Colour Supplied With

Dimmable Driver

- Ideal for residential, retail, showroom and decorative lighting applications
- Supplied with a dimmable LED driver
- Long life and durability
- Suitable for 24 hour use
- Easy to install



### ORDERING INFORMATION

<b>Order code</b>	11075
<b>Description</b>	11W LED Downlight with Dimmable Driver - 90 degree beam - Anodised - TRI - SER II
<b>Driver Power</b>	12 W
<b>Driver Type</b>	Dimmable ( Phase cut)
<b>Item Code</b>	AT9012/AND/TRI

### EFFICIENCIES

<b>Total System Efficiency</b>	114 lm/W
--------------------------------	----------

The performance of each component of a luminaire is demonstrated through its efficiencies, which together determine the total system efficiency of the product. The output of the LED chip is first multiplied by the optical and thermal efficiencies to calculate the Luminaire efficiency. However, this calculation does not consider the driver efficiency. To determine the overall efficiency of the system, the Luminaire efficiency must be multiplied by the driver efficiency, which accounts for all losses in the system.

### MECHANICAL

<b>Adjustability</b>	Fixed
<b>Body Material</b>	Aluminium
<b>Diffuser Material</b>	PMMA
<b>Product Finish</b>	Powder coated
<b>Fitting Colour</b>	Natural
<b>IC Rating</b>	IC-4

IC-4 rating has been conducted at the products maximum working Temperature Range (C) in line with Australian standards. This provides the required safety when covered with insulation and used in Australian Environments.

<b>Installation Type</b>	Recessed
<b>IP Rating</b>	IP44 Front Face Only

### ELECTRICAL

<b>Electrical Rating</b>	Class II
<b>Input Frequency</b>	50 Hz
<b>Input voltage</b>	230Vac
In Australia the Input voltage is defined as 230Vac -6%/+10%. This effectively means that the voltage range of these products are 216Vac - 253Vac or 240V +6%	
<b>Maximum Wattage</b>	11 W
<b>Power Factor</b>	0.9
<b>Switch Type</b>	Inline
<b>System Max Wattage</b>	12 W
<b>Working Temp Range</b>	0 to 40 °C

### LAMP

<b>Macadam Steps (SDCM)</b>	4-step MacAdam Ellipse
<b>Beam Angle</b>	90 °
<b>CCT Configuration</b>	TRI-CCT
<b>Colour Rendering Index (CRI)</b>	>80
<b>Lamp/LED Current</b>	350 mA
<b>LED Type</b>	Diffused
<b>Number of Lamps</b>	1

## LED LIFETIME

**LED Lifetime** >60000 hrs

This is the Reported LED Lifetime in Hours based on TM-21. Atom does not list the projected or calculated LED lifetime, which is normally longer as TM-21 Addendum B explicitly states "The Calculated and Projected Lp(Dk) are not to be reported". This Lifetime refers to the life of a single LED however the system life is longer since the probability and binomial distribution of all LEDs in the system means that the average led is performing above the specification and compensates for the LEDs falling below.

**Ambient Temp (°C)** 25 °C 40 °C

**L90B10** 35000 hrs 35000 hrs

This rating defines the performance of the led within its lifetime. L relates to lumen depreciation, where the preceding number gives the resultant lumen output at the end of its reported lifetime. L70, would mean 70% lumen depreciation which means 30% of its initial output and is tested accordingly to TM-21. The B part refers to failures, which can be define as the percentage of LEDs which fall below the L value in the projected lifetime. A value of B10 refers to 10% failure and a value of B50 refers to 50% failure. After the defined lifetime, the system will reach the defined lumen depreciation and the average led failures is defined by the B rating. The B rating is defined in and tested to IEC62717.

**TM-21 Test Hours** 10000 hrs

## COLOUR TEMPERATURE

Warm White (3000 K) 1150 lm  
Cool White (4000 K) 1250 lm  
DayLight (6000 K) 1200 lm

## DRIVER

**Dimmable** Yes

**Driver Code** 10974

**Driver Included** Yes

**Integrated Driver** No

**Driver Type** Dimmable ( Phase cut)

**Driver Warranty** 3 Yr

**Flex & Plug or Lead Length** 120 mm

**Wiring Type** Re-wireable Flex & Plug (2 pin)

## ENERGY SAVINGS SCHEME

**Ipart Approval** Yes

**REES Approval** Yes

**VEU Approval** Yes

## COMPLIANCE

**Standards** AS/NZS 60598.1  
AS/NZS 60598.2.2  
AS/NZS 61347.1  
AS/NZS 61347.2.13  
AS CISPR 15

## WARRANTY

**Domestic Use Warranty** 3 RTB (Total 3 Years)

**Operational Lifetime** 50000 hrs

**VIP Warranty** 2 Onsite, 3 RTB (Total 5 Years)

VIP warranty is available to registered users and is subjected to additional terms and conditions.

## DIMENSIONS

**Cutout** 92 mm

**Product Diameter** 110 mm

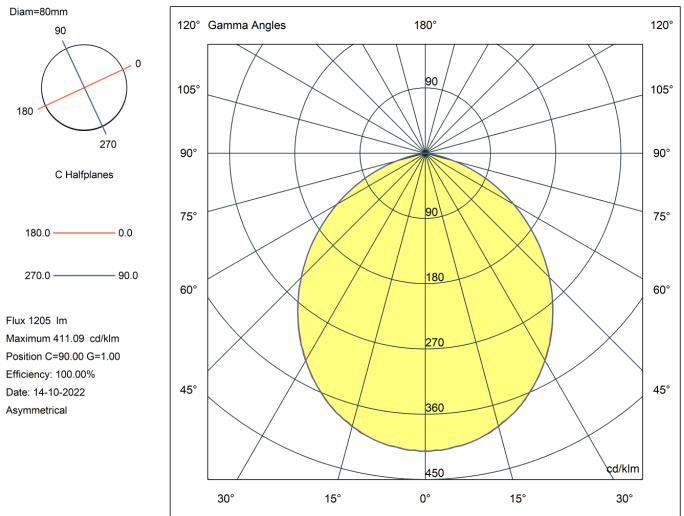
**Product Height** 38 mm

## LINE DRAWINGS

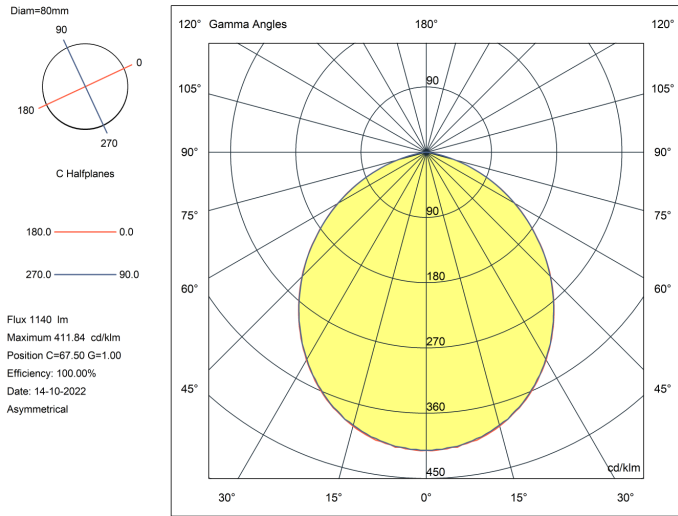
### AT9012/TRI

## PHOTOMETRICS

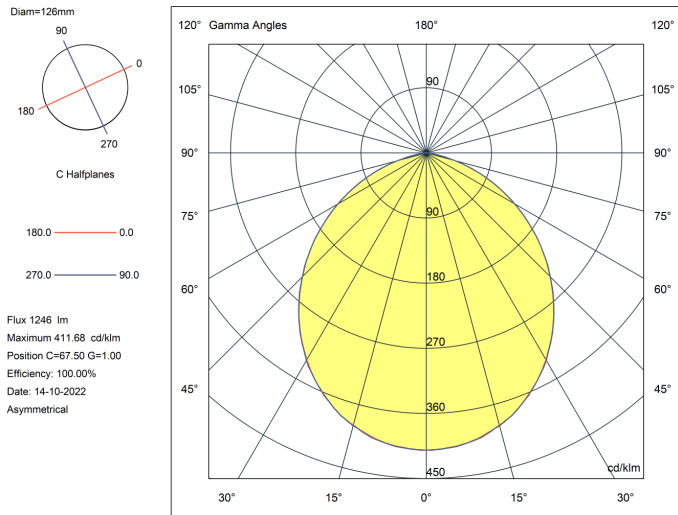
### AT9012/TRI (6000K)



## AT9012/TRI (3000K)



## AT9012/TRI (4000K)



## ACCESSORIES

<b>Order code</b>	10121
<b>Description</b>	140mm Downlight Extension Plate - White
<b>Item Code</b>	AT9018/WH
<b>Order code</b>	10130
<b>Description</b>	170mm Downlight Extension Plate - White
<b>Item Code</b>	AT9019/WH