

Residential Range

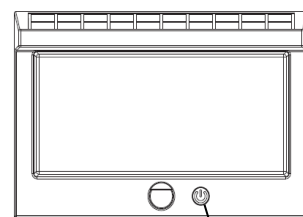
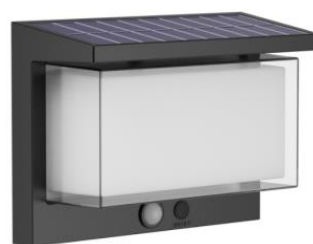
Wall Lights

Decorative Wall Light

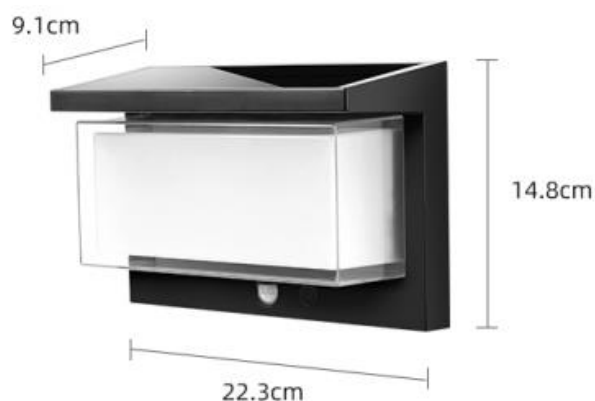
Product Code	LED's	Battery	Solar Panel	IP Rating	Lumens
SLDWL0010-WW	8 x 0.2w (WW)	2 x 3.7v 1800mAh Lithium	2w Monocrystalline	44	1000
SLDWL0010-CW	8 x 0.2w (CW)	2 x 3.7v 1800mAh Lithium	2w Monocrystalline	44	1000

Features:

- Motion Sensor (PIR)
- High Quality ABS Plastic
- Automatic Day/Night Operation
- On/Off Button
- Approximately 8-12 hours Operation per day
- 6-9 hours charging time
- 4 Lighting Modes
 - **Mode 1:** 15% brightness until motion detected, then 100% brightness.
 - **Mode 2:** Off until motion detected, then 100% brightness.
 - **Mode 3:** Lamp stays on at constant 50% brightness.
 - **Mode 4:** Lamp stays on at constant 20% brightness.
- Press a 5th time to turn off.



ON/OFF Switch



Definitions:

WW = Warm White

CW = Cool White

PIR = Pyro-electric Infrared Sensor

Packaged Fitting Weight & Dimensions

W: 0.8kg

D: 23.5cm x 16cm x 10.5cm

Motion Detection:

