

# Residential Range

## Bollard Lights

### Bollard Light

Product Code	LED's	Battery	Solar Panel	IP Rating	Lumens
SLDBL0093-S1-2.4W	12 x SMD LED @0.2W (CW)	1 x 6.4V 1.4Ah Li-ion	3W Integrated Polycrystalline	44	4 x Brightness Settings
SLDBL0094-S1-2.4W	12 x SMD LED @0.2W (CW)	1 x 3.7V 2.2Ah Li-ion	2W Integrated Polycrystalline	44	200 @ 1m

#### Features:

- UV Stabilized Poly-Carbonate Construction
- Spike or Surface Mounted
- SLDBL0093-S1-2.4W =
  - o 4 x Brightness Settings; 50, 100, 150 & 200 Lumens
  - o Approximately 6-8 hours Operation
- SLDBL0094-S1-2.4W =
  - o 1 x Brightness Setting; 200 Lumens
  - o Approximately 6-8 hours Operation

**1 Year Warranty!**

#### Packaged Fitting Weight & Dimensions

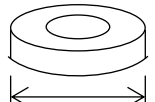
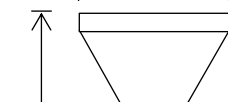
W: 1.6kg

D: 39cm x 24cm x 21cm

SLDBL0093-S1-2.4W  
(Square Head)

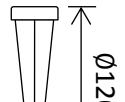


200mm/Ø200mm



Ø120mm

940mm



Ø120mm

Ø55mm



SLDBL0094-S1-2.4W  
(Round Head)

#### **SLDALP-100**

Optional 1m  
Aluminium  
Extension post to  
suit Residential  
Bollards