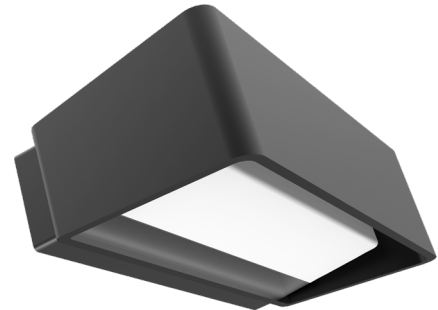


TOPATRI

LED TRI-CCT Exterior Surface Mounted Up/Down Wall Lights

Exterior Lighting



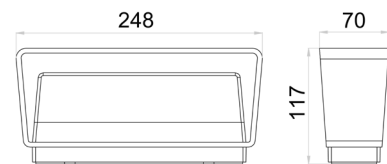
TOPATRI1
(Dark grey)



TOPATRI2
(White)

PRODUCT FEATURES:

- Exterior LED surface mounted up/down wall lights
- Input voltage range: 100-240V AC 50/60Hz
- Inbuilt constant current driver included
- Housing & heatsink: aluminium
- Diffuser & bracket: PC
- Tri-CCT (3000K / 4000K / 6500K) in one fitting
- CCT switch inside the fitting
- LED chips: 24pcs SMD2835
- CRI: >80
- Power factor: >0.8
- Ambient temperature: -20 to 50°C
- Not suitable for dimming
- Suitable for 2-way switching
- Suitable for use with PIR or Microwave sensors




30,000hr
Lifetime


304°
Beam Angle

IP65
Rated

3YEAR
Replacement
Warranty

Part No.	Description	Lumens			Watt	Length	Height	Depth	Box Weight	Box Dimension	Carton QTY
		3000K	4000K	6500K							
TOPATRI1	WALL S/M Up/Dn 13W LED TRI 796Lm IP65 Rect Dark Grey Opal Diff	678LM	796LM	776LM	13W	248mm	70mm	117mm	1.0kg	26x13x8cm	1/12
TOPATRI2	WALL S/M Up/Dn 13W LED TRI 796Lm IP65 Rect White Opal Diff	678LM	796LM	776LM	13W	248mm	70mm	117mm	1.0kg	26x13x8cm	1/12