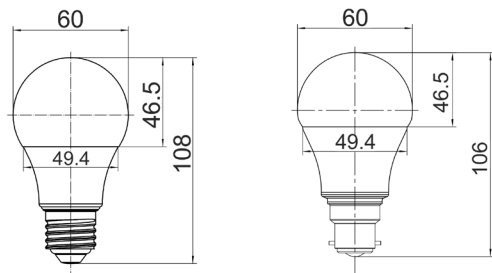


LED SMART GLS GLOBES

SMTGLS DIMMABLE TRI-CCT + RGB

Technical Features:

- Input voltage range: 220-240V 50/60Hz
- Housing: plastic & aluminium
- Diffuser: plastic
- Frosted Diffuser
- LED chips: 20pcs SMD2835
- CRI: ≥80
- Power factor: ≥0.5
- Ambient temperature: -20 to 30°C
- App: control all functions via Tuya app on smart devices
- Manual: on/off control via normal wall switch
- Dimmable only via app or voice control through Amazon Alexa, Google Home and other compatible voice activated control devices (Not compatible with wall switch dimmer)
- Setup requires WiFi connection
- Suitable for 2-way switching
- Not suitable for use with sensor



NO HUB REQUIRED

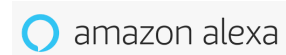


SMTGLS1

SMTGLS2

Additional SMART Features:

- Tuneable RGB colour spectrum (up to 14 million colours)
- Tuneable colour temperature (3000K warm white through to 6500K daylight)
- Works with any 2.4GHz enabled WiFi network (note: will not currently pair with 5.0GHz bandwidth.) or Bluetooth LE 4.2
- Create schedules and timing to automate your home
- Control from anywhere via app or voice control using Alexa Hubs, Google Home and other compatible devices
- Compatible with all Tuya Powered apps



PART NO.	DESCRIPTION	BASE	KELVIN	LUMENS	WATT	PRODUCT DIMENSIONS	CARTON QTY
SMTGLS1	GLOBE LED SMART ES GLS 10W RGB TRI CCT	E27	RGB+	700-800LM- 3000K	10W	Ø60X108mm	1/10/100
SMTGLS2	GLOBE LED SMART BC GLS 10W RGB TRI CCT	B22	3000-6000K	750-880LM- 4000K 750-880LM-6000K	10W	Ø60X108mm	1/10/100