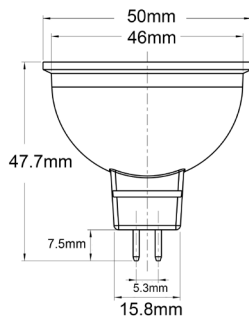
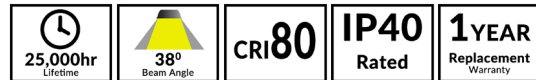


MR16 LED GLOBES



Product Features:

- Input voltage: 12V AC/DC
- Driver input voltage: 12V 50/60Hz
- Driver output voltage: 18V
- Driver input current: 1100mA
- Driver output current: 260mA
- Driver inrush current: 30A
- Housing & heat sink: aluminium & plastic
- LED chips: 6pcs SMD2835
- Wattage: 6W (=40W incandescent globe)
- Power factor: ≥ 0.5
- Ambient temp: -15 to 40°C
- Not suitable for dimming
- Suitable for 2 way switching
- Suitable for use with 3 wire PIR or Microwave sensors
- **Remote constant voltage AC/DC control gear required**



PART NO.	DESCRIPTION	KELVIN	LUMENS	WATT	LENGTH	DIAM	WEIGHT	BOX	CARTON QTY
MR1601A	GLOBE LED 12V AC/DC (White) MR16 6W	3000K	480LM	6=40	47.7mm	50mm	0.05kg	6x6x6cm	1/100
MR1602A	GLOBE LED 12V AC/DC (White) MR16 6W	5000K	495LM	6=40	47.7mm	50mm	0.05kg	6x6x6cm	1/100

Recommended Control Gears:

BRAND	PART NO.	TYPE	IP RATING	MIN-MAX LOAD	QTY OF GLOBES
LUXMAN	ETH50.302VA (50W)	Transformer	IP65	10W-40W	2-6
CLA	CLADR12W	LED Driver (Constant Voltage)	IP20	1.2W-9.6W	1
CLA	DRIV1	LED Driver (Constant Voltage)	IP20	1.2W-9.6W	1
CLA	OTTER1	LED Driver (Constant Voltage)	IP67	1.2W-9.6W	1
OSRAM	ET-REDBACK (20-60W)	Transformer	INDOOR	20-60W	4-9
ATCO	Possum (20-60W)	Transformer	INDOOR	20-60W	4-9

UPDATED ON 16.10.2018