

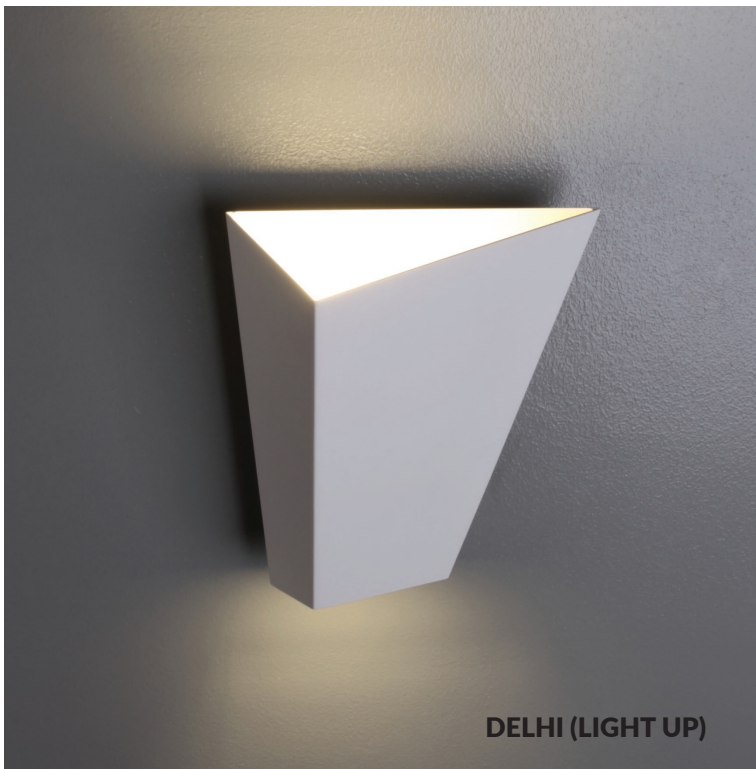


DELHI

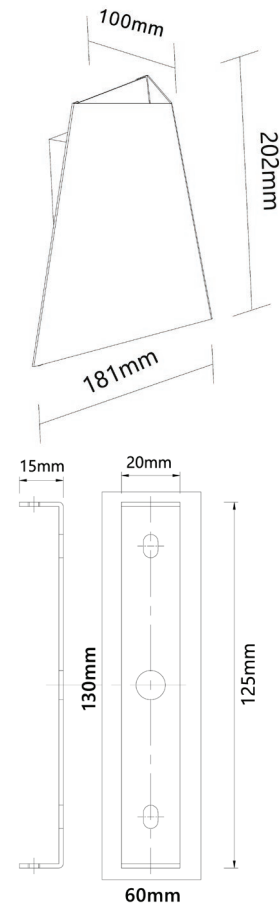
CITY SERIES-DELHI LED INTERIOR WALL LIGHT

- Input voltage: 100~250V AC 50/60Hz
- Output voltage: 26~40V
- Nominal current: 300mA
- Material: aluminium
- Wattage: 12W
- Power factor: ≥ 0.5
- 24pcs Edison SMD2835 LED chips
- CRI: 80
- Ambient temp: -20 to +60°C
- Not suitable for dimming
- Suitable for 2-way switching
- Suitable for use with PIR & Microwave sensors

LIFE TIME 30,000 HOURS	BEAM 120°	IP20 RATED	WARRANTY 2YEARS REPLACEMENT
------------------------------	--------------	---------------	-----------------------------------



DELHI (LIGHT UP)



Back Plate Dimensions

PART NO.	DESCRIPTION	KELVIN (K)	LUMENS (LM)	WATT (W)	CRI	WEIGHT (KG)	BOX (CM)	CARTON QTY
DELHI	WALL INTERNAL Angled Up/Down S/M CITY LED SAND WH 12W IP20 3000K	3000	469	12	80	1.04	16.5x21.5x6.5	12

UPDATED ON 02.01.2018

Tel: (02) 9938 7100 | Fax: (02) 9938 7115 | Email: sales@clalighting.com.au

Website: www.clalighting.com.au



Follow us: facebook.com/CLALighting