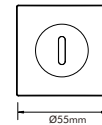
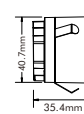
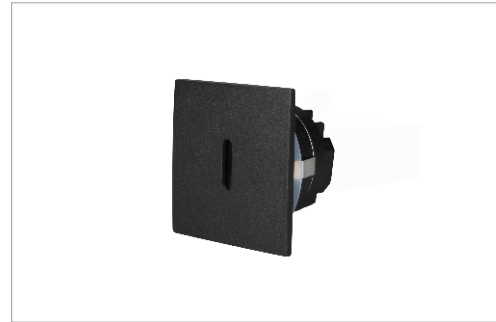


LED STEP LIGHT

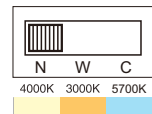
Product Features

- Made of die-casting.
- Powder coating finish from AkzoNobel.
- Interchangeable faceplate with magnetic design.
- High density COB with uniform lighting distribution.
- Compatible with leading and trailing edge phase cut dimmers.
- 5-year guarantee



Cut-out: Ø45mm

Use the pre-set switch to set color temperature before installation.



Technical Specification

Model	St 516 TC
Watts	3W
Input Voltage	AC200-240V
Power Factor	0.8
Colour Temp.	3000K-4000K-5700K
CRI	90+
Lumens Output	27-36lm
Size (L* D *H)	H35.4mm*Φ55mm
IP Grade	IP20
Housing Colour	black/white/Satin Chrome
Beam Angle	Asymmetric 10°
Cut out	Φ45mm
Material	Die-cast Aluminium with RA.90004



* The information in this datasheet may be changed by 3A Lighting at any time without prior notice.