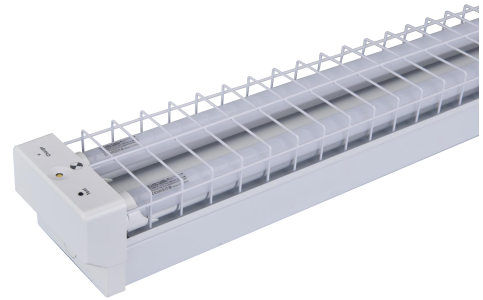


## LED EMERGENCY 4FT BATTEN - WIRE GUARD

### Product Features

- LED emergency wire-guard batten
- 1.2m
- Maintained operation
- In accordance with AS2293.3 & IEC 60598-2-22
- Long life-span with low power consumption



Tested By 

### Technical Specification

Model	SP-220WG-EM
Input Voltage	220-240AC ; 50/60Hz
Battery	4.8V 1800mAh NI-MH
Charge time	24 hours
Discharge time	2 hours
Operating Temp	0°C~40°C
Material	Flame retardant (V-0)+Metal
AC Stage LED Power	2*18W LED Tube
DC Stage LED Power	DC wattage:1.7W
Classification	C0:D25,C90:D25

