

Power Puk 01 / Warm White



Order Code: **19910**

Product Code: **EVPP01WW**

Colour: **Warm White**  3200K

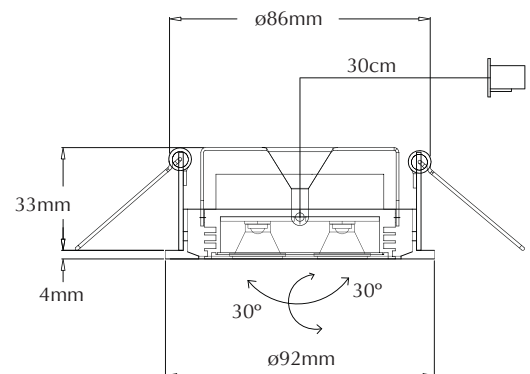
Description: Power Puk LED downlight, anodised silver frame, 4 way tilt adjustable.

Data: Cree 3 x 3W LED, 300lm output, 3 x 30° beam spread, requires 700mA Constant Current LED driver.

Size: Ø92mm (H) 33mm

Cutout: Ø86mm

Requires: 700mA Constant Current LED driver (EVPD309) not included.
Please refer to power supply section for correct drivers.



9W output	Warm White 3200K	Constant Current	3 x 30° Beam spread	300 Lumens	Series wiring required
--------------	---------------------	---------------------	------------------------	---------------	---------------------------